



香港教育大學
The Education University
of Hong Kong

POSTGRADUATE PROGRAMMES

2024 Entry







香港教育大學
The Education University
of Hong Kong

Information Centre
資訊中心

Cho Kwai Che Foundation Building
蔡國子基金會大樓

A

A

Programme Enquiries

Graduate School (GS)

Email : gradsch@eduhk.hk
Website : www.eduhk.hk/gradsch
In person : Graduate School
Room B4-G/F-02
The Education University of Hong Kong
10 Lo Ping Road, Tai Po, Hong Kong

Academy for Applied Policy Studies and Education Futures (AAPSEF)

Email : aapsef@eduhk.hk
Website : www.eduhk.hk/aapsef
In person : Academy for Applied Policy Studies and Education Futures
Room B2-P/F-03
The Education University of Hong Kong
10 Lo Ping Road, Tai Po, Hong Kong

Academy for Educational Development and Innovation (AEDI)

Email : aedi@eduhk.hk
Website : www.eduhk.hk/aedi
In person : Academy for Educational Development and Innovation
The Education University of Hong Kong
10 Lo Ping Road, Tai Po, Hong Kong

Faculty of Education and Human Development (FEHD)

Phone : (852) 2948 8576
E-mail : fehd@eduhk.hk
Website : www.eduhk.hk/fehd
In person : Faculty of Education and Human Development
Room D1-G/F-02
The Education University of Hong Kong
10 Lo Ping Road, Tai Po, Hong Kong

Faculty of Humanities (FHM)

Phone : (852) 2948 7237
E-mail : fhm@eduhk.hk
Website : www.eduhk.hk/fhm
In person : Faculty of Humanities
Room B2-G/F-04
The Education University of Hong Kong
10 Lo Ping Road, Tai Po, Hong Kong



Faculty of Liberal Arts and Social Sciences (FLASS)

Phone : (852) 2948 7151
Fax : (852) 2948 7162
E-mail : flass@eduhk.hk
Website : www.eduhk.hk/flass
In person : Faculty of Liberal Arts and Social Sciences
Room B2-G/F-04
The Education University of Hong Kong
10 Lo Ping Road, Tai Po, Hong Kong

Applications and Admissions Enquiries

Phone : (852) 2948 6886
Fax : (852) 2948 6162
E-mail : tpgadmission@eduhk.hk
Website : www.eduhk.hk/acadprog/postgrad.html
In person : Admissions, Registrations and Academic Planning Section
The Education University of Hong Kong
10 Lo Ping Road, Tai Po, Hong Kong

Global Affairs Office

Phone : (852) 2948 7654
Fax : (852) 2948 8198
E-mail : gao@eduhk.hk
Website : www.eduhk.hk/gao
In person : Room A-G/F-09
Cho Kwai Chee Foundation Building
The Education University of Hong Kong
10 Lo Ping Road, Tai Po, Hong Kong

Every effort has been made to ensure that information contained in this prospectus is correct. Changes to any aspects of the programmes may be made from time to time due to unforeseeable circumstances beyond our control and the University reserves the right to make amendments to any information contained in this prospectus without prior notice. The University accepts no liability for any loss or damage arising from any use or misuse of or reliance on any information contained in this prospectus.

This prospectus should be read in conjunction with Graduate School's website (www.eduhk.hk/gradsch). In any case, you are strongly advised to visit Graduate School's website and take the most up-to-date published information on the website as reference. In the event of any disputes regarding the content of this prospectus, the University reserves the right to make the final decision.

Disclaimer - Any aspect of course offerings (including, without limitation, the content of the course and the manner in which the course is taught) may be subject to change at any time at the sole discretion of the University. Without limiting the right of the University to amend the course and its course offerings, it is envisaged that changes may be required due to factors such as staffing, enrolment levels, logistical arrangements, curriculum changes, and other factors caused by unforeseeable circumstances. Tuition fees, once paid, are non-refundable.

About EdUHK

The Education University of Hong Kong is a publicly funded tertiary institution dedicated to the advancement of learning and teaching, through a diverse offering of academic and research programmes on teacher education and complementary social sciences and humanities disciplines.

We nurture educators and social leaders who are intellectually active, socially caring, and globally aware, to become agents of change in the communities that they serve. We place great emphasis on research capability — our research will contribute to the advancement of knowledge, scholarship and innovation, with sustainable impact on social progress and human betterment.

EdUHK aims to be a leading university in the Asia Pacific region and beyond, with a focus on educational research, development and innovation.



Our Vision

We will further enhance our role as a leading university in the Asia Pacific region and beyond, with a focus on educational research, development and innovation. We will continue to raise our profile and impact locally, regionally and internationally through our high quality research and scholarship. We are committed to nurturing outstanding and caring educators and professionals who contribute constructively to sustainable social and economic development in Hong Kong and beyond.



Our Mission

Committed to the Education-plus approach, our primary mission is to lead educational innovation, and to promote and support the strategic development of teaching, teacher education and disciplines complementary to education by preparing outstanding and morally responsible educators and professionals while supporting their lifelong learning.

We will:

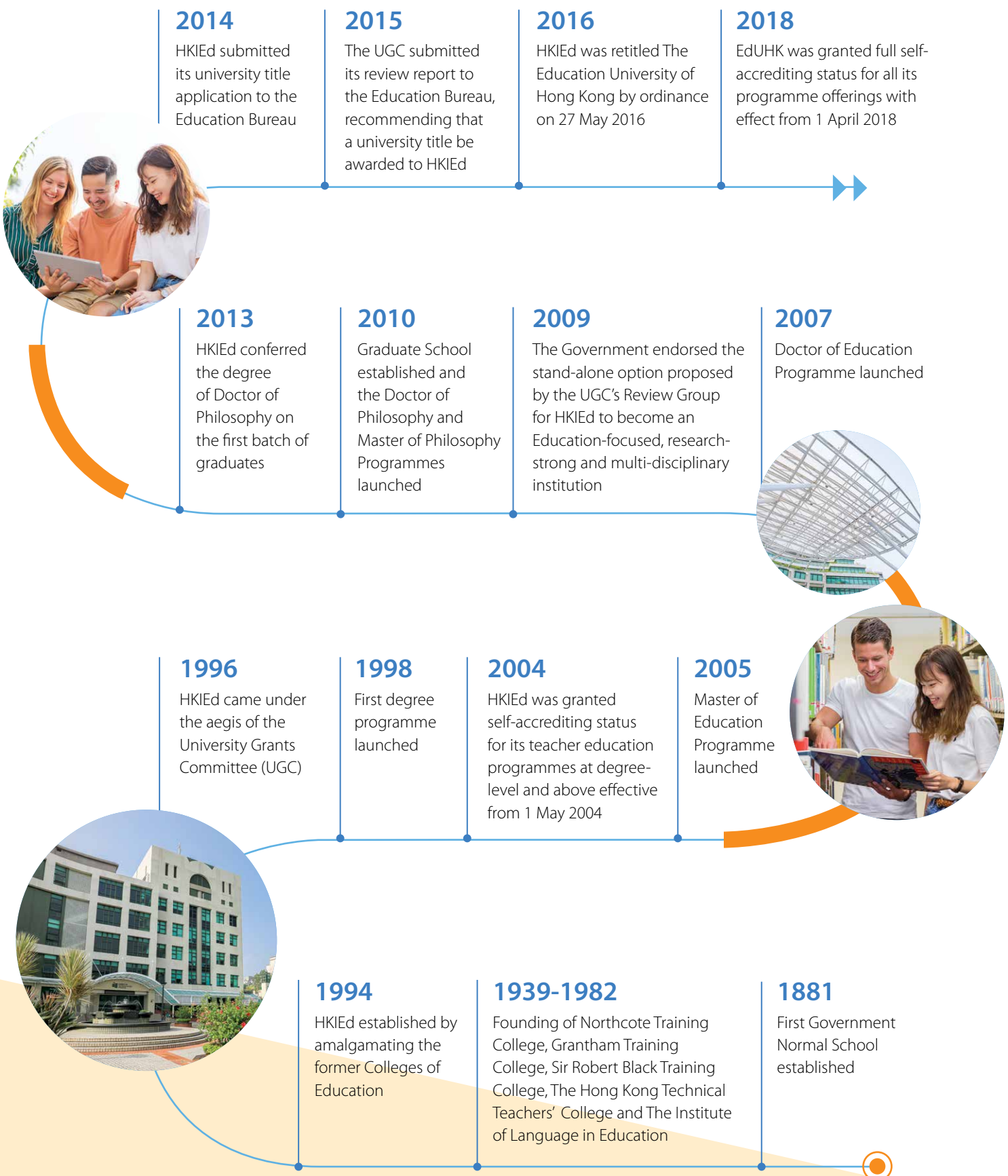
- provide a multidisciplinary learning and research environment beyond education that is conducive to intellectual pursuits, free thinking and speech, advocacy of policy and practice, and the promotion of collaboration and diversity;
- enhance professional teacher and teaching education programmes and programmes in disciplines complementary to education with innovative curricula which will enrich students' experiences and enable them to realise their personal potential as well as their educational and career goals;
- prepare our students to become educators and professionals who can integrate theory and practice, and who are creative, innovative, intellectually active, entrepreneurial, socially caring and globally aware;
- foster a vibrant research culture and environment which contributes to the advancement of knowledge, scholarship and innovation, with a sustainable impact on social progress and human betterment; and
- engage in knowledge transfer activities which contribute to the development of the University and the wider community while serving the needs of educational and social development locally, regionally and internationally.

Our Core Values

- Professionalism
- Innovation
- Moral Responsibility
- Societal Caring
- Global Awareness



Milestones



Graduate Attributes for Taught Postgraduate and Research Postgraduate Students



The graduate attributes for Taught Postgraduate and Research Postgraduate students consist of the following three domains (i.e., in short “PEER & I”):

Professional Excellence;
Ethical Responsibility; &
Innovation

Graduate Attributes for Taught Postgraduate Students

Professional Excellence

- Demonstrate an advanced and up-to-date knowledge, understanding and competence in a specialty;
- Apply theoretical and professional knowledge and strategies into practice and promote evidence-based practices through the application of rigorous methodology;
- Understand research, and/or advanced technology or professional activity; and
- Prepare to make contribution to a field either through practice or research.

Ethical Responsibility

- Uphold ethics in academic inquiry of a chosen field;
- Possess the professional ethics and social responsibility in a profession; and
- Be sensitive to multiple contexts and value diversity and differences.

Innovation

- Be able to critically review, differentiate and synthesize knowledge in a discipline and apply diagnostic and creative skills in a range of situations;
- Be capable of locating problems/gaps in established literature/contexts; and
- Enable change and innovation by encouraging new ways of knowing and doing.

Graduate Attributes for Research Postgraduate Students

Professional Excellence

- Is at the international forefront of respective subject area, and demonstrate a comprehensive understanding of the theories and/or policies as applied to a specialty area;
- Able to evaluate the appropriateness and usefulness of various perspectives and processes in research;
- Discover and define emerging questions in a specialty and contribute to the development of new knowledge/theories/methods/interpretations/forms of documentation within the specialty; and
- Apply advanced skills in research design as well as methods for data collection and analysis for the areas of study.

Ethical Responsibility

- Demonstrate an understanding of and full commitment to the underlying values and ethics of the scientific inquiry of the chosen field;
- Possess professional ethics and develop a pro-active sense of social responsibility in a field as an academician or researcher; and
- Maintain a high level of ethical integrity by always prioritizing ethical values over self-interest.

Innovation

- Appraise the literature, ideas, and other information critically from local, regional and international sources;
- Conduct original research via appropriate and creative methodologies and analyze data with flexibility and novelty, which contribute to the fields or society; and
- Extend or transform a novel or unique idea, question, format or create new or boundary-crossing knowledge.

Note: The EdUHK graduates of Postgraduate Diploma in Education (PGDE) programmes will possess the same set of Graduate Attributes of TPg programmes with emphasis on the relevance to educators' professional practice.

Table of Content

1. Programme Information

1.1 Postgraduate Programmes offered by Graduate School

- Doctor of Philosophy & Master of Philosophy [PhD & MPhil] 2
- Doctor of Education [EdD] 4
- 教育博士 (中文班) 6
- Master of Education [MEd] 8

1.2 Postgraduate Programme offered by Academy for Applied Policy Studies and Education Futures

- Executive Master of Public Administration and Leadership [EMPAL] 10
高級公共行政及領導碩士

1.3 Postgraduate Programme offered by Academy for Educational Development and Innovation

- Master of Science in Educational Neuroscience [MSc(EdN)] 12
教育神經科學理學碩士

1.4 Postgraduate Programmes offered by Faculty of Education and Human Development

- Executive Master of Arts in International Educational Leadership and Change [IELC] 14
- Master of Arts in Child and Family Education [MA(CFE)] 16
- Master of Arts in Digital Learning and Technology [MA(DLT)] 18
- Master of Arts in Educational Counselling [MA(EC)] 20
- Master of Arts in Global Higher Education [MA(GlobalHE)] 22
- Master of Arts in Global Studies in Education [MA(GSE)] 24
- Master of Arts in Leading Experiential Learning Activities [MA(LELA)] 26
- Master of Arts in Leading Innovative Learning Organizations [MA(LILO)] 28
- Master of Arts in Positive Psychology in Education [MA(PPE)] 30
- Master of Science in Educational Speech-Language Pathology and Learning Disabilities [MScESLPLD] 32
- Master of Social Sciences in Psychology (Schools and Community Settings) [MSocScP(SCS)] 36
- Master of Teaching [MTeach] 38
- Postgraduate Diploma in Education (Early Childhood Education) [PGDE(ECE)] 40
- Postgraduate Diploma in Education (Professional and Vocational Education) [PGDE(PVE)] 42

1.5 Postgraduate Programmes offered by Faculty of Humanities

- Master of Arts in Chinese Studies (Language Education) [MACSLE] 44
中文研究文學碩士 (語文教育)
- Master of Arts in Digital Humanities for Cultural Professionals [MADHCP] 46
- Master of Arts in Global Histories of Education [MAGHE] 48
- Master of Arts in Teaching Chinese as an International Language [MATCIL] 50
國際漢語教學文學碩士
- Master of Arts in Teaching English to Speakers of Other Languages [MATESOL] 52

1.6 Postgraduate Programmes offered by Faculty of Liberal Arts and Social Sciences

- Master of Arts in Education for Sustainability [MA(EfS)] 54
- Master of Arts in Mathematics and Pedagogy [MA(MP)] 56
- Master of Arts in Music Education [MA(ME)] 58
- Master of Arts in Personal Finance Education [MA(PFE)] 60
- Master of Arts in STEM Education [MA(STEM Ed)] 64
- Master of Arts in Visual Arts Education and Creative Practice [MA(VAECPP)] 66
- Master of Public Policy and Management [MPPM] 68
- Master of Science in Artificial Intelligence and Educational Technology [MSc(AI&EdTech)] 70
- Master of Social Sciences in Sports Coaching and Management [MSocSc(SCM)] 72
- Master of Social Sciences in Therapeutic Play and Well-Being [MSocSc(TPWB)] 74
- Postgraduate Diploma in Education (Primary) [PGDE(P)] 76
- Postgraduate Diploma in Education (Secondary) [PGDE(S)] 80

2. Application and Admission 84

3. Facilities and Student Services 88

4. Location and Campus Map 90



Programme Information



Doctor of Philosophy & Master of Philosophy

PhD & MPhil | A3D054 / A4D056 / A2M053 (Full-time)

Programme Director: Prof GU Ming Yue Michelle

✉ rpg@eduhk.hk



➤ www.eduhk.hk/gradsch/rpg
(Please refer to the website for the most up-to-date programme information)

Introduction

As a research postgraduate (RPG) student at the University, you will follow a programme of study under the guidance of a principal supervisor and a supervision committee. At the start of your programme, you will draw up a plan for your research in consultation with your supervisors for completion of your thesis within the period of registration for the degree. Your work plan and training programme will be reviewed annually in the light of your research needs and progress.

The research training programme at EdUHK consists of four core courses. The core courses provide a broad coverage of the central skills as well as ethical and methodological issues of research in the fields of education, social sciences, humanities, languages and linguistics, and creative arts and culture. The courses, workshops and seminars provide the opportunity for you to become part of the University's larger research community. You will be able to meet and discuss your work with students and staff from different academic departments and learn more about the research taking place at the University.

Upon the completion of the RPG programmes, students should be able to:

- Critically appraise the literature;
- Demonstrate a comprehensive understanding of the theories and/or policies as applied to a specialty practice area;
- Apply advanced skills in research design as well as methods for data collection and analysis appropriate for the areas of study;
- Demonstrate an understanding of and full commitment to the underlying values and ethics in the scientific inquiry in the chosen area; and
- Employ effective presentation skills for the dissemination of research results and outcomes.

PhD and MPhil Curriculum

Completion of a PhD degree normally requires 3 - 4 years of full-time study: 3 years for students with a research Master's degree; 4 years for students without a research Master's degree. Completion of an MPhil degree normally requires 2 years of full-time study. The Confirmation of Candidature is expected to be taken after 12 months of study. This confirmation process provides an opportunity for students to obtain recommendations on their research plan, describe their investigation procedures and identify the range of expertise necessary to complete the research. Application for conversion from MPhil to PhD will be considered after Confirmation of Candidature and completion of the coursework requirements.

Medium of Instruction

The medium of instruction and assessment is English.

Entrance Requirements

PhD

A Master's degree (or equivalent qualification) from a recognised university; or a Bachelor's degree with first class honours (or equivalent qualification) from a recognised university.

MPhil

A Bachelor's degree (or equivalent qualification) from a recognised university.

English Language Requirements*

Applicants whose entrance qualification is obtained from an institution in a non-English speaking system should normally fulfil one of the following minimum English proficiency requirements:

1. Overall score of IELTS 6.5 with no subtest lower than 6.0; or
2. TOEFL score of 80 (internet-based test); or
3. Other equivalent qualifications.#

* Individual field of study such as English language may have higher requirement.

The College English Test (CET) is not accepted as an equivalent qualification.



Financial Assistance

Full-time RPg students at EdUHK are offered financial supports to cover their tuition fees, daily subsistence, and other expenses that may incur in the course of their studies. There are various types of financial supports as outlined below.

Tuition Waiver Scheme

Starting from the 2018/19 academic year, the HKSAR Government has provided tuition waiver for all local students enrolled in UGC-funded RPg programmes.



For details, please refer to:
www.ugc.edu.hk/eng/rgc/funding_opport/tws.html

Postgraduate Studentship

All full-time students admitted to the RPg programmes are automatically considered for the Research Postgraduate Studentship (RPGS). As a form of scholarship, the RPGS provides the RPg students with financial assistance to complete the programme. The RPGS is given based on academic merit; and the award is not taxable income. The value of the studentship shall be determined and adjusted by the University from time to time. The monthly stipend for the 2023/24 academic year is HK\$18,000 (approximately US\$2,300) for all MPhil and PhD students and HK\$18,500 (approximately US\$2,370) for post-candidacy PhD students. The RPGS shall be tenable on an annual basis and awards for subsequent years will be reviewed and determined by the University, subject to the satisfactory performance of the RPGS holders. RPGS holders are required to undertake duties that carry educational benefits for the holders, such as, but not limited to, other research/academic activities, as assigned by the University.

The Hong Kong PhD Fellowship Scheme

The Hong Kong PhD Fellowship Scheme (HKPFS) is designed to attract the best and brightest students in the world to pursue their PhD studies in a tertiary institution in Hong Kong funded by the University Grants Committee (UGC). The scheme awards applicants with outstanding qualities of academic performance, research ability/potential, communication and interpersonal skills, and leadership abilities. It provides a monthly stipend of HK\$27,600 (approximately US\$3,520), plus HK\$13,800 (approximately US\$1,760) per year for conference and research-related travel expenses.



For more details, please visit :
www.rgc.edu.hk/hkphd

Research Support

The University encourages RPg students to present their work internationally and to exchange information with others in their research areas. Financial support of up to HK\$11,000 (approximately US\$1,410) would be provided to each RPg student to attend international/national/local conferences or workshops as well as to have immersion visits to international/national/local research universities/departments/centres which are relevant to their research areas and directly related to their thesis. In addition, to encourage and facilitate research activities of RPg students, an amount of HK\$10,000 (approximately US\$1,280) per year, maximum 2 years for PhD candidates and 1 year for MPhil students, will be provided as research support funding.

Tuition Fee

The tuition fee for the 2024/25 academic year is HK\$42,100 (approximately US\$5,400) per annum, which is provisional and subject to adjustment. Tuition fees paid are normally not refundable or transferable. Extension fees will be charged to students who have to extend their studies beyond the normal duration.



Doctor of Education

EdD | A3D045 (Full-time)/C4D001 (Part-time)

Programme Director: Dr LEE Kwai Sang

✉ edd@eduhk.hk



➔ www.eduhk.hk/gradsch/edd

(Please refer to the website for the most up-to-date programme information)

此課程設有中文班，詳情請參閱第6至7頁)

Programme Aims

The Doctor of Education (EdD) programme is aimed at experienced educators and professionals in education settings who aspire to extend their expertise in a particular Specialised Area, and their professional knowledge in a broad range of educational contexts through core courses.

Upon the completion of the programme, students should be able to:

- Demonstrate an expert knowledge, understanding and competence in the Specialised Area and in the larger educational context;
- Generate appropriate theoretical frameworks to address, analyse and propose innovative approaches to a broad range of educational issues;
- Develop insights into research trends in the Specialised Area and demonstrate readiness to contribute to the professional literature in that field;
- Analyse educational policies, processes or practices from different perspectives critically;
- Effectively communicate concepts and theories within the Specialised Area to an audience of peers both locally and internationally; and
- Demonstrate a thorough understanding of ethical practices within the Specialised Area.

Programme Structure

The EdD programme comprises 72 credit points (cps) which normally takes 3 years of full-time and 4 years of part-time studies to complete. Students are required to attend face-to-face classes on Saturdays, weekday evenings and occasionally during long holidays, primarily at the Tai Po Campus and/or other venues as decided by the University. Depending on enrollment numbers, courses may be delivered in directed study mode. Different modes of delivery, teaching and learning activities as well as assessment methods could be adopted as deemed appropriate.

Courses	Credits	
Taught Core Courses	Conceptualising Research	3
	Research Methods I	3
	Research Methods II	3
2 Specialised Courses	6	
2 Elective Courses	6	
Seminars for Thesis Writing and Knowledge Transfer	3	
Development of Thesis Proposal	6	
Thesis	42	
Total:	72 cps	





Specialised Areas

Students may choose one of the following Specialised Areas offered in the programme:

Curriculum and Assessment

- Curriculum Studies
- Educational Measurement and Assessment

Educational Studies

- Civic and Citizenship Education
- Early Childhood Education
- Leadership for Future Schools
- International and Comparative Education
- Special Education

Language and Culture

- Language Education (Chinese)
- Language Education (English)
- Creative Arts Education

Policy Studies

- Social Sciences and Policy Studies

Science and Technology

- Information and Communication Technology in Education
- Mathematics Education
- Science Education and Education for Sustainability

Wellbeing and Health

- Developmental and Educational Psychology
- Health Studies
- Life and Values Education
- Physical Education and Sports Science

Medium of Instruction

The medium of instruction is English.

Admission Requirements

Basic Requirements

Applicants must hold a Master's degree in a discipline within education or a cognate field relevant to their chosen Specialised Area, with four years or more of work experience are preferred. Interviews will only be arranged for those who pass the preliminary selection.

English Language Requirements

Applicants are expected to demonstrate a high standard of competence in spoken and written English. Applicants whose entrance qualification is obtained from an institution in a non-English speaking system should normally fulfil one of the following minimum English proficiency requirements:

- IELTS 6.5 with no subtest lower than 6.0; or
- a TOEFL score of 80 (internet-based test); or
- Other equivalent qualifications[^]

[^] *The College English Test (CET) is not accepted as an equivalent qualification. Individual Specialised Area such as Language Education (English) may have higher requirement.*

Tuition Fee

The tuition fee for the 2024/25 academic year is HK\$5,350 per credit, i.e. HK\$385,200 for the 72-credit point of EdD programme, which is provisional and subject to adjustment. The University reserves the right to make changes to tuition fee without prior notice. Tuition fees paid are normally not refundable or transferable. Extension fees will be charged to students who have to extend their studies beyond the normal duration (3 years for full-time and 4 years for part-time).

Please refer to the programme website (www.eduhk.hk/gradsch/edd) for updates of specialised areas offered in 2024/25.

教育博士（中文班）

A3D055（全日制）/ C4D004（兼讀制）

課程總監：李貴生博士

✉ eddchi@eduhk.hk



www.eduhk.hk/gradsch/eddchi

（最新資訊請瀏覽網頁）

課程目標

教育博士（中文班）課程旨在為有經驗的教育工作者和專業人士提供培訓，提升他們在特定教育領域的專業能力，並且通過相關核心科目擴闊他們在不同教育範疇的專業知識。

課程完成後，學生應能夠：

- (I) 在專業領域和更廣泛的教育場景中展示專門的知識、見解和技能；
- (II) 建構適當的理論框架，處理和分析不同類型的教育議題，提出創新的解決方法；
- (III) 培養洞悉專業領域研究趨勢的識見，並展現出能為該領域的專業文獻作出貢獻的能力；
- (IV) 從不同角度批判地分析教育政策、過程或實踐；
- (V) 有效地將專業領域內的概念和理論傳達予本地及國際的同儕；
- (VI) 對專業領域內的倫理實踐展示出充分的認識。

課程結構

本課程共七十二學分，主要以面授方式進行；論文及導修課的上課模式及安排由導師依個別情況決定。

範疇	學分
研究構想	3
核心課	
研究方法 I	3
研究方法 II	3
兩門專業課	6
兩門選修課	6
研討會 — 論文寫作與知識轉移	3
研究計劃的開展	6
畢業論文	42
總計	72





專業領域

- 中文教育
- 幼兒教育
- 特殊教育
- 創意藝術教育
- 公民素養教育
- 未來教育領導力
- 健康研究
- 課程研究
- 數學教育
- 科學與可持續發展教育
- 教育資訊與通訊科技
- 體育教育與運動科學
- 社會科學與政策研究

有關2024/25學年接受入學申請的專業領域，請瀏覽課程網頁。

教學語言

本課程主要以普通話/粵語授課。在適當的情況下，部份環節將輔以英語。

學費

本課程於2024/25年度之學費為每學分港幣五千三百五十元。全期學費為港幣三十八萬五千二百元（七十二個學分）。上述學費可能於日後有所調整，已繳學費一般不獲退還或轉授。超逾常規修讀期限（全日制三年/兼讀制四年）而仍須修讀科目以符合畢業要求之學生，需繳交延期修讀費用。

入學條件

基本入學要求

申請人必須持有教育學科或與所選專業領域相關之碩士學位，有四年或以上工作經驗者優先考慮。通過初步遴選的申請人會獲安排面試。

中文要求

申請人應表現出高水準的中文口語和書寫能力。如申請人的母語不是中文，又未嘗取得中文為主要授課語言的學位，必須通過中國漢語水準考試（HSK）6級，或具備同等能力。

英文要求

個別專業領域對英語的閱讀能力可能有不同要求，詳情請瀏覽課程網頁。

Master of Education

MEd | A1M043 (1-year Full-time) /
C2M001 (2-year Part-time)

Programme Director: Dr TSANG Yiu Fai Chris

✉ medadmission@eduhk.hk



➤ www.eduhk.hk/gradsch/med
(Please refer to the website for the most up-to-date programme information)

Programme Aims

The programme aims at individuals who aspire to professional advancement in the educational sector, and those who intend to strengthen their foundational knowledge and deepen their study in certain Areas of Focus. It is designed to support students in integrating their past experience with new insights in theory, practice and leadership. The curriculum combines specialist study and a broad-based education in professional reflection, assessment and research methods. It provides flexible learning routes for students from different knowledge backgrounds.

By the end of the programme, students will be able to:

- demonstrate advanced knowledge and awareness of new developments in their chosen Area of Focus;
- review educational research critically, and conduct educational inquiries independently;
- apply assessment principles and strategies for the promotion of learning;
- evaluate the larger policy and cultural contexts of education in Hong Kong and other societies with a critical perspective; and
- possess professional ethics and social responsibility in the field of education.



Programme Structure

The MEd programme comprises 24 credit points (cps). Students are required to take 8 courses (3 cps for each course) to complete the requirements. The following options are available:

Educational Studies

Students with a broad interest in education may choose this option.



All Areas of Focus except Educational Studies

They are designed for students who wish to deepen their professional knowledge in a particular Area of Focus, complemented by elective courses offered in the programme.



* Students may choose to carry out a research project instead of taking 3 courses in the same Area. The research project comprises supervised

Areas of Focus

Students can choose any one of the following Areas of Focus offered in the Programme:

- Business Education and Human Resources Development
- Curriculum, Teaching and Assessment
- Early Childhood Education
- Educational and Developmental Psychology^{^1}
- Educational Leadership
- Educational Studies
- English for Academic Purposes
- Health and Physical Education
- Life and Values Education
- Mathematics, Technology, Science and Environment
 - Mathematics and Technology Strand^{^2}
 - Science and Environmental Studies Strand
- Special Needs, Giftedness and Counselling^{^3}

^{^1} Applicants must provide documentary evidence that an introductory undergraduate psychology course or equivalent has been taken at a tertiary institution.

^{^2} Applicants must hold a relevant Bachelor's degree in Mathematics, Science or Information Technology from a recognised university.

^{^3} High proficiency in English and previous training in the Area of Focus of Special Needs, Giftedness and Counselling are necessary.

Areas of Focus and courses on offer are subject to change and sufficient enrolment. More details and updated information are available on www.eduhk.hk/gradsch/med.

Medium of Instruction

The medium of instruction can be English and Chinese (including Putonghua) as consistent with the University's policy.

Tuition Fee

This programme is offered on a self-funded basis. The tuition fee for the whole programme is HK\$151,200 (i.e. HK\$6,300 per credit point), which is provisional and subject to adjustment. The University reserves the right to make changes to tuition fee without prior notice. Tuition fees paid are normally not refundable or transferable. Extension fees will be charged to students who have to extend their studies beyond the normal duration (i.e. 1 year for full-time and 2 years for part-time).

Entrance Requirements

Applicants should normally hold a recognised Bachelor's degree, or equivalent. Applicants may be required to attend an interview/test.

Applicants whose entrance qualification is obtained from an institution in a non-English speaking system should normally fulfil one of the following minimum English proficiency requirements which may be subject to adjustment:

- Overall score of IELTS 6.0 (academic version) (the test should be taken in test centres and the result should be valid within two years); or
- TOEFL score of 80 (internet-based test) (the test should be taken in test centres and the result should be valid within two years); or
- Band 6 in the Chinese Mainland's College English Test (CET) (a total score of 430 or above and the test result should be valid within two years); or
- Grade C or above in GCSE / GCE OL English; or
- Other equivalent qualifications.

As for the Area of Focus of English for Academic Purposes, the minimum English proficiency requirements are as follows:

- IELTS 6.5 (academic version and the test result should be valid within two years) with no subtest lower than 6.0; or
- a TOEFL score of 90 (internet-based test and the test result should be valid within two years); or
- Other equivalent qualifications.

Individual Areas of Focus may have different entrance requirements. Please refer to individual Areas of Focus for details.

Students who have relevant postgraduate qualifications may be eligible to apply for credit transfer from some courses.

Targeted Taught Postgraduate Programmes Fellowships Scheme

(For Local Students In Priority Areas Only)

The application is by invitation (i.e. Students are required to first obtain an admission offer from the programme before invited to apply for the fellowship.) The fellowship students are required to pay a minimum tuition fee of HK\$42,100, and the differences will be subsidised by the fellowships subject to a cap of HK\$120,000 (for the whole taught postgraduate programme, regardless of the actual study period) for the settlement of the tuition fee only.

高級公共行政及領導碩士

Executive Master of Public Administration and Leadership

EMPAL (Programme Code: A1M112 & C2M042)

(一年全日制/兩年兼讀制)

課程總監：周文港博士

課程查詢：(852) 2948 7987 / (852) 2948 8171

✉ empal@eduhk.hk



✉ <https://empal.eduhk.hk/en/>

(Please refer to the website for the most up-to-date programme information)

簡介

全球任何一個現代化、國際化而且不斷進步的地方，均以提升公共行政及管治水平為首要目標。

為使有志於從事公共行政及管治領域的人士，能深入認識國際、國家、大灣區及香港在公共行政、經濟、財政、國際關係、安全及網絡安全等領域的最新變化，探討最新的應對辦法，香港教育大學EMPAL課程的定位，將培養能促進香港、以至國家不斷發展及進步的公共行政領導者，學科內容強調「立足香港、背靠祖國、聯通世界」，注重學生在「知識、技能、價值」各方面兼備的公共行政及領導能力的提升。希望學生完成課程後，能基本做到「敢於擔當、以民為本、善作善成」等目標，從而投入公共行政及領導行列。

現其他的公共行政、公共管理及公共政策等課程，主要以西方學術界傳統的公共管理及公共政策方法為課程的發展基礎。隨著時代及國際形勢的變化，為進一步滿足社會各持份者對政府治理不斷提升的要求，以及應對最新社會經濟發展形勢所帶來的挑戰，本課程將延聘不同領域的資深專家及學者，為學生提供不同的視角和專業實踐，讓學生在「一國兩制」框架下，深度思考和分析公共行政、經濟、財政、國際關係、安全及網絡安全等議題，為香港、以至內地各級政府部門和公、私營機構，培養具備「立足香港、背靠祖國、聯通世界」的能力、最新專業知識和治理能力的公共管理人才。

課程特色

- 課程特別適合具備公共管理、公共關係、政治學、經濟學、工商管理學等相關專業知識的學生，或者是對公共行政、政策研究和領導力發展感興趣的專業人士；
- 學生未來職業發展路向廣泛，包括公務員、公私營機構的管理人員、非政府組織的管理及專業人士、公共政策研究員、社區領袖等；
- 課程將提供深度學習，提升學員不同領域的專業水平，適合未來有意在公共行政、社區管理、公共政策研究等領域發展的學生；課程亦會提供不同的參觀、講座及訪談等體驗式學習，令學生更快了解公共行政及領導的必要知識。

為使理論緊密聯繫實際，本課程將邀請來自不同領域的資深專家學者擔任課程講師，為同學講授前線經驗；並會為有意參與公共行政領域工作的優秀同學提供相關實習機會；

本課程尤其歡迎來自香港、內地、澳門等地區，具備二年或以上工作經驗、中英文雙語兼善，尤其在公共行政、紀律部隊、工商、專業等不同界別具有豐富經驗的申請人；在相關領域有傑出成就、資歷較深的申請人將優先獲得考慮。

課程目標

課程主要教授公共行政、治理和政策的相關知識為基礎，並為學生提供廣闊而跨學科的知識和技能，從多角度分析國際、國家、大灣區及香港等，從微觀到宏觀，包括公共行政、經濟、財政、國際關係、安全及網絡安全等議題。課程將結合公共行政理論、政策研究和分析等相關理論和方法，增進學生對公共行政相關問題和現象的理解，使畢業生能掌握國際、國家、大灣區及香港的發展機遇，增強在該地區的競爭力，以應對未來複雜多變的挑戰。

學員修畢本課程後，應能：

1. 進一步深化認識國家和香港的政治體制、治理與發展方式、外交立場和國際關係，尤其與未來發展密切相關的區域經濟、公共財政、安全與網路安全、科技政策及媒體關係等基礎知識；
2. 強化管理及應變能力，以應對日常工作上所面對的來自社會、營商、公共關係、對外關係等方面所帶來的各種挑戰和危機；
3. 充分掌握國家和區域經濟最新政策及發展的相關機遇和挑戰，特別是雙循環新發展格局下的發展前景和潛力，成為具備「立足香港、背靠祖國、聯通世界」視野和立場的成功公共行政領導者。

本課程共含二十四個學分，全日制課程學員一般於一年內修畢課程，兼讀制學生一般於兩年內修畢課程。課程主要於下午及傍晚上課，部份科目會於晚間或週六上課。上課地點主要為北角教學中心，而部分科目有機會需於大埔校園及將軍澳教學中心上課。

課程內容分為以下兩個範疇

核心範疇	15 學分
選修範疇	9 學分
總計	24 學分

核心範疇

科目名稱	學分
中國國家治理與發展	3
香港特別行政區的管治與發展	3
中國外交與國際關係	3
中國區域經濟與香港經濟發展：挑戰與機遇	3
公共行政、管理和領導技能	3

選修範疇 (6選3)

科目名稱	學分
公共政策和公共財政	3
當代安全和網絡安全問題	3
數碼政府：發展與趨勢	3
科技與創新政策：發展與趨勢	3
傳播、媒體和公共管治	3
社會研究與社會實踐	3

教學語言

本課程主要以普通話授課。在適當的情況下，部份環節將輔以英語/粵語。

學費

全期學費為港幣十六萬八千元（二十四個學分）。上述學費可能於日後有所調整，已繳學費一般不獲退還或轉授。超逾常規修讀期限（全日制一年/兼讀制兩年）而仍須修讀科目以符合畢業要求之學生，需繳交延期修讀費用。

入學條件

申請人一般須持有認可大學頒授的：

- 學士學位或其他同等學歷；
- 具有兩年及以上專業及/或工作經驗；及
- 如應屆畢業的申請人學習成績優異，亦可獲得考慮。



教育神經科學理學碩士

Master of Science in Educational Neuroscience

MSc (EdN) | A1M113 (一年全日制) / C2M043 (兩年兼讀制)

課程總監：吳丹丹博士

課程查詢：(852) 2948 8703

✉ mscedn@eduhk.hk

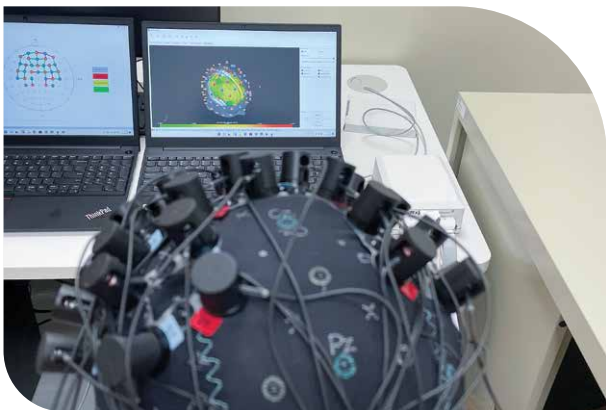


🔗 <https://mscedn.eduhk.hk/en/>
(Please refer to the website for the most up-to-date programme information)

簡介

教育神經科學理學碩士[MSc(EdN)]是由教育發展與創新學院(AEDI)提供的研究生課程。該創新課程旨在通過提供跨越神經科學與教育科學的課程內容，以滿足日益增長的專業需求，培養能夠將學術前沿的神經科學研究發現轉化為有效教育實踐的專業人士。

- 為了深入理解現代學習和教學的動態，我們的多學科方法整合了教育學、神經科學、心理學、社會學和教育技術。通過強調當今人工智能驅動時代的挑戰和機遇，我們旨在提升學生運用神經科學原理推動教學創新和提升教育質量的能力。
- 本課程專為目前在香港、大灣區、其他內地地區和海外的托兒所、幼兒園、學前班、小學、中學和大學工作，或希望在教育機構工作的申請者而設。無論您是希望豐富您目前的職業生涯還是拓寬就業前景，通過我們的課程，您將獲得在教育領域中脫穎而出所需的知識、技能和態度。



課程目標

本課程旨在賦予學生將神經科學原理和研究成果應用於教育場景和實踐中的知識和技能。將神經科學融入教育中，能夠革新我們對兒童發展、認知過程、學習風格和個體差異的理解方式。通過深入地了解學生的需求和能力，教育工作者能夠調整課程、教學和評估方法，以滿足每個學生的獨特需求。

神經科學為學習的最佳條件和策略提供了寶貴的見解，包括有意義的活動、交替學習階段和測試、間隔學習、社會互動和反饋等。學生可以從這些見解中受益匪淺，了解如何提高他們的注意力、記憶力、執行功能、學習動機和情緒調節能力的神經科學機制，這些對學業成績和個人成長至關重要。

融合課程和全納教育在香港和中國內地廣泛實施，這為教師帶來了與神經多樣性相關的各種挑戰和機會。通過本課程學習，教育工作者可以更好地認識和尊重學習者的差異，包括閱讀障礙、自閉症、注意力不足過動症和資優。我們的課程通過營造重視多樣性的包容、公平的學習環境，鼓勵形成尊重和支持所有學生的文化。

課程結構

教育神經科學理學碩士（一年全日制/兩年兼讀制）課程包含24個學分。主要的授課地點為大埔校園。

課程內容

核心課程（18學分）

科目名稱	學分
教育神經科學基礎	3
學與教的神經科學研究進展	3
教育神經科學研究方法	3
教育神經科學研究、數據分析與報告	3
專題研究	6

選修課程（6學分）

（從以下四門課程中任選2門）

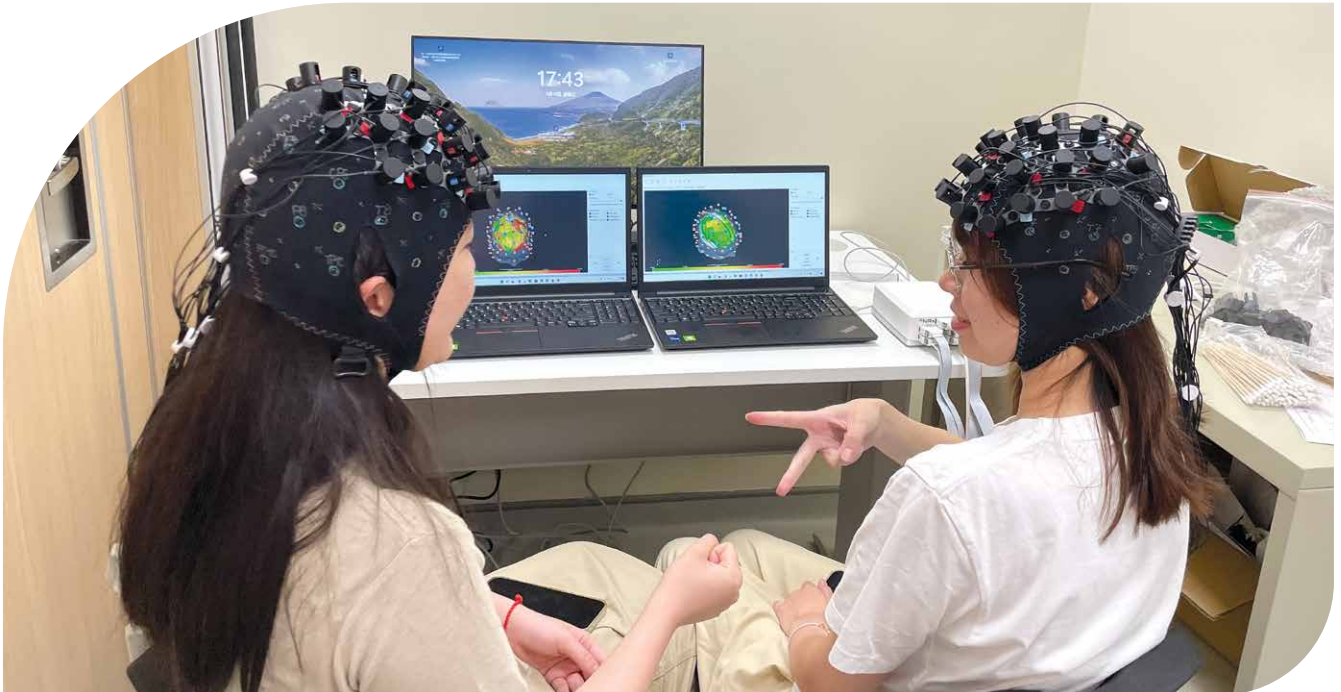
科目名稱	學分
認知、語言與社會情緒發展與教育	3
神經科學在心理健康與教育的應用	3
神經科學在特殊和全納教育的應用	3
神經科學在科技和媒體教育的應用	3

教學語言

中文（普通話輔以粵語）

學費

全期學費為港幣168,000（二十四個學分）。上述學費仍在審核中，日後可能有所調整。已繳學費一般不獲退還或轉授。超逾常規修讀期限（全日制一年/兼讀制兩年）而仍須修讀科目以符合畢業要求之學生，需繳交延期修讀費用。



Executive Master of Arts in International Educational Leadership and Change

IELC | C2M004 (2-year Part-time Distance)

Programme Director: Dr Ewan WRIGHT

Enquiry Hotline : (852) 2948 8702

✉ ielc@eduhk.hk



👉 www.ielc.eduhk.hk

(Please refer to the website for the most up-to-date programme information)

A world-class postgraduate programme in educational leadership without a career break

About the Programme

The Executive Master of Arts in International Educational Leadership and Change is an online and part-time programme designed to develop leaders with the capacity to operate successfully in an international leadership environment and lead educational change, particularly in the Asian context.

Special Features

- Online delivery
- World-class leadership development
- Scholar-practitioner orientation
- Flexible structure and innovative learning
- Global reputation and alliances
- Regionally-focused teaching
- International scope and content
- Networking opportunities
- Gateway to further study

Participants

We encourage applications from practising and aspiring educational leaders, including principals, middle leaders, curriculum leaders, teacher leaders and NGO managers across Asia and beyond.

The programme is highly international with participants from over 30 nationalities based in 25 jurisdictions joining us since the programme was established in 2009/10.

Programme Structure

The postgraduate programme comprises six courses taught online, a residential School Improvement Institute and a School-based inquiry project.

The average time to complete all courses is 18 months.

Online Courses

- Organisational Behaviour
- Effective School Leadership
- International Perspectives on Educational Reform
- Leading Organisational Change
- Leading Professional Learning
- Leading Learning Organisations

Credit Transfer

The IELC offers credit exemption for participants who have completed programmes of the Ontario Principals Council, International School Leadership Ltd and the English Schools Foundation.



Global Partners

EdUHK collaborates with the International Baccalaureate to offer IELC participants the opportunity to attain two postgraduate leadership certificates: IB Certificate in Leadership Practice and IB Advanced Certificate in Leadership Research.



The IB Certificate in Leadership Practice is designed for educators and administrators who want to improve their leadership capabilities or career aspirations in an IB context. Participants develop and refine their ability to take on leadership responsibilities and understand their role in guiding a school through IB authorisation and implementation.

The IB Advanced Certificate in Leadership Research uses rigorous investigative work to give educators and administrators a more profound understanding of IB leadership responsibilities and capabilities. It includes research within the context of IB leadership as well as deep reflections on personal leadership practice.

EdUHK also collaborates with Cambridge Assessment International Education to offer IELC participants the opportunity to attain the **Cambridge International Diploma in Educational Leadership**.



Professional Development Centre

Cambridge leadership qualifications are designed to help leaders develop their professional thinking and practice, and enhance their (1) knowledge, skills and understanding of effective leadership, (2) leadership practice and (3) school and its effectiveness.

They will be of interest to

1. Aspiring and practising leaders working at one of the more than 10,000 Cambridge school across 160 countries worldwide.
2. Teachers and administrators from non-Cambridge schools who wish to develop an understanding of leadership in Cambridge school contexts.

Timetable

The following timetable indicates the course dates. Each course runs for eight weeks followed by a four-week break. The School Improvement Institute (A residential course in Hong Kong) is offered in early July for three days. The School-based Inquiry Project: Leading School Improvement is offered each January, May and September.

Date	Course Code	Course Name
2024		
July 22 – Sept 13	EDA6048	Effective School Leadership
Oct 14 – Dec 6	EDA6047	Organizational Behavior
2025		
Jan 6 – Feb 28	EPA6102	International Perspectives on Educational Reform
Apr 7 – May 30	EDA6009	Leading Organizational Change
July 9 – July 11	EDA6037	School Improvement Institute
July 22 – Sept 13	EDA6090	Leading Professional Learning
Sept 4 – Dec 8	EDA6012	School-based Inquiry Project
Oct 16 – Dec 8	EDA6005	Leading Learning Organizations

Mode of Study

The courses are designed for working professionals and are delivered in an online and part-time mode. The use of online technology enriches the learning experience and provides participants with the flexibility to integrate and manage their study and professional commitments. Online delivery also facilitates communication, work, and networking with supervisors, fellow participants, and international professional experts introduced in the programme.

The courses are taught by a team of internationally recognised scholars and experienced school leaders who possess a deep understanding of education issues in Asian and global education contexts.

For each course, detailed study materials, including narrated presentations, reading portfolios, and assessment tasks, will be provided via a dedicated online programme website. Online coursework is supported through communication with academic staff by email, discussion boards, and Zoom meetings.

Medium of Instruction

The medium of instruction and assessment is English.

Admission

There are four entry points per year (Jan, Apr, Jul, Oct).

Entrance Requirements

- Hold a recognised bachelor's degree
- Minimum of three years of professional experience in a role that offers opportunities to exercise leadership at the group, organisation, or system level
- Interview
- Applicants whose entrance qualification is obtained from an institution in a non-English speaking system should normally fulfil one of the following minimum English proficiency requirements:
 - IELTS 6.0 ; or
 - Grade C or above in GCSE/GCE OL English; or a TOEFL score of 80 (internet-based test, but Home Edition is not considered); or
 - Other equivalent qualifications.

The results of IELTS/TOEFL provided **should be within two years** (i.e., for the 2024/25 intake, the IELTS/TOEFL test must be obtained on or after 1 Jan 2022); and

The results of IELTS/TOEFL **should be "taken in test centres"** (i.e., tests taken online such as IELTS indicator/ IELTS Online and TOEFL Home Editions are NOT accepted).

Tuition Fee

The tuition fee for the whole programme is HK\$132,000 (HK\$16,500 per course) in the academic year 2024/25. The tuition fee is provisional and subject to adjustment. Tuition fees paid are normally not refundable or transferable. Scholarships are awarded on a competitive basis.

Scholarship

IELC applicants are eligible for the Future Leaders Scholarship. Applicants for the scholarship will be assessed on leadership qualities, including potential for leadership and/or leadership experience.

Programme Leader

If you have any questions, please feel free to contact the Programme Leader, Dr Ewan Wright at etmwright@eduhk.hk

Master of Arts in Child and Family Education

MA(CFE) | A1M089 (1-year Full-time)/
C2M021 (2-year Part-time)
Programme Leader: Dr FONG Yui Chi Cathy
Enquiry Hotline: (852) 2948 7117
✉ macfe@eduhk.hk



👉 www.eduhk.hk/macfe
(Please refer to the website for the most up-to-date programme information)

Special Features

- Emphasises family and parenting practices with the development of children, the understanding of family dynamics in children's outcomes, and the use of education and intervention programmes to strengthen parenting practices for the positive development of children.
- Run by EdUHK's Department of Early Childhood Education. The department has a prolific scholarly output and quality teams in both of child education and family studies.
- Offers a versatile approach with two study tracks, allowing both research and practice paths for students of different potentials, interests, and professional goals.
- The practice track provides field attachment opportunities for students to gain workplace experience and insight into child and family services in real-life organisational contexts.
- The programme offers Entrance Scholarships, Academic Scholarships, and International Exchange Award to freshmen and students with outstanding achievement.

Participants

Those who work or aspire to work with children and families, and are keen to develop a deeper understanding of their work.

Programme Structure

Title	Credit Points
Core Courses	
<ul style="list-style-type: none"> • Understanding Families in Educational and Community Settings • Early Child Development and Education across Cultures • Current Research in Parent-child Relationships • Family Education: Principles and Practices • Designing and Evaluating Programmes for Children and Families • Research Methods in Education 	18
Elective Courses	
(The programme will assign prospective students to either one of the following elective tracks according to their indicated preferences, background/qualities, and course quota)	
<ul style="list-style-type: none"> • Thesis Track: <ul style="list-style-type: none"> - Thesis • Practice Track: <ul style="list-style-type: none"> - Counselling in Child and Family Education: Theories and Skills and Field Attachment in Child and Family Education 	6
Total	24

Class Time and Venue

Classes are primarily held on weekday evenings and on Saturdays at the Tai Po Campus and/or other venues as decided by the University.

Medium of Instruction

The medium of instruction is English. The fieldwork attachment for the practice track will be conducted in Chinese or English.

Entrance Requirements

Applicants should hold a recognised Bachelor's degree and/or a postgraduate diploma, preferably in education, psychology or related disciplines. Shortlisted applicants may be required to attend an interview and/or take a test.

Applicants whose entrance qualification is obtained from an institution in a non-English speaking system should normally fulfil one of the following minimum English proficiency requirements:

- IELTS 6.0 ; or
- Grade C or above in GCSE/GCE OL English; or
- a TOEFL score of 80 (internet-based test); or
- Band 6 in the Chinese Mainland's College English Test (CET) (a total score of 430 or above and the test result should be valid within two years); or
- Other equivalent qualifications.

The results of IELTS/TOEFL provided **should be within two years** (i.e., for the 2024/25 intake, the IELTS/TOEFL test must be obtained on or after 1 Jan 2022); and

The results of IELTS/TOEFL **should be "taken in test centres"** (i.e., tests taken online such as IELTS indicator/IELTS Online and TOEFL Home Editions are NOT accepted).



Tuition Fee

The tuition fee for the whole programme is HK\$144,960 (\$6,040 per credit), which is provisional and subject to adjustment. Tuition fees paid are normally not refundable or transferable. Extension fees will be charged to students who have to extend their studies beyond the normative period of study (i.e. 1 year for full-time and 2 years for part-time).

“ This programme has given me a better understanding on family structures, marital relationships, and parenting and parental beliefs. These issues could greatly affect children's development and their values formation. Both Chinese and Western researches and case studies were covered in the programme to elaborate the importance of family education. After completing the programme, I share the knowledge and skills I obtained from the lectures with my friends and students and encourage them to enhance the strength in their families. ”

Ms Chan Man Lee

Part-time Lecturer of
Department of Early Childhood Education,
EdUHK Alumna of MA(CFE)

Master of Arts in Digital Learning and Technology

MA(DLT) | A1M108 (1-year Full-time)/
C2M038 (2-year Part-time)
Programme Leader: Dr KONG Suet Yee Suria
Enquiry Hotline: (852) 2948 8485
✉ madlt@eduhk.hk



👉 www.eduhk.hk/madlt
(Please refer to the website for the most up-to-date programme information)

Introduction

The MA(DLT) aims to provide educators and professionals with opportunities to develop their interdisciplinary knowledge, understanding, and skills in designing and applying digital technologies in various disciplines and contexts. The programme will build their leadership in transforming formal and informal educational experiences, and optimise their use of digital technologies in promoting lifelong learning and digital literacy in the workplace in meeting the growing demand for talent in the 21st century.

Programme Aims

The programme is expected to:

- Enable students to acquire skills in using digital and educational technologies to transform teaching and learning experiences, including design, implementation and evaluation of curriculums, teaching and learning activities and assessments;
- Enhance digital literacy of target groups/industries.



Programme Structure

The MA(DLT) is a 24-credit-point (cp) programme comprising 8 courses, including 3 core courses, 2 practical research and application courses, and 3 specialisation courses from one of the four specialisations (3 credit points/course).

Title	Credit Points
Core <ul style="list-style-type: none"> • Digital Leadership and Technologies to Transform Instruction, Learning and Evaluation • Apply Digital Technologies to Diverse Disciplines and Contexts • Digital Literacy for Future Citizenship 	9
Practical Research and Application Courses <ul style="list-style-type: none"> • Capstone Project • International Perspectives on Digital Learning and Technology 	6
Education and Social Enterprises Specialisation <ul style="list-style-type: none"> • Designing Digital Innovation in Educational and Social Enterprises • Digital Transformation in Educational and Social Organisations • Effective Teaching and Learning Using Mobile Technologies • Digital Well-being for Education and Social Enterprises 	9

Digital Media and Media Literacy Specialisation

- Curating Online Exhibitions for Visual Arts Learning
- Human Technology Interactions and Digital Media Literacy
- Technology in Music Teaching and Learning
- Contemporary Digital Media and Practices

Technology Field Specialisation

- Creative Multimedia and Design
- Mobile Applications Design and Development
- Artificial Intelligence in Education
- Metaverse in Education and Society

Language/ Language Arts Specialisation

- Digital Literacy in Chinese Language Learning
- Digital Literacy and English Language Teaching
- English Literature and Data Analytics
- Digital Technology for Language Studies

Total

24

Programme Curriculum

- Develop a comprehensive understanding of learning in the digital age and how digital technologies can transform the teaching and learning experience
- Apply theories of digital learning and technologies to design and implement educational innovations at a variety of education levels
- Develop digital literacy to use information and communication technologies to find, evaluate, create, and communicate information
- Critically analyse and evaluate the role, impact, and challenges of digital technology on educational practice in diversified disciplines and contexts

Medium of Instruction

English supplemented by Chinese (Putonghua/Cantonese)

Tuition Fee

The tuition fee is HK\$142,800 which is provisional and subject to adjustment.

Entrance Requirements

Applicants should normally hold a recognised bachelor's degree or equivalent. Shortlisted applicants may be required to attend an interview.

Applicants whose entrance qualification is obtained from an institution in a non-English speaking system should normally fulfill one of the following minimum English proficiency requirements:

- Overall score of IELTS 6.0 (academic version); or
- Grade C or above in GCSE/GCE OL English; or
- TOEFL score of 80 (internet-based test); or
- Band 6 in the Chinese Mainland's College English Test (CET) with a total score of 430 or above and the test result should be valid within two years; or
- Other equivalent qualifications.

The results of IELTS/TOEFL provided **should be within two years** (i.e., for the 2024/25 intake, the IELTS/TOEFL test must be obtained on or after 1 Jan 2022); and

The results of IELTS/TOEFL **should be "taken in test centres"** (i.e., tests taken online such as IELTS indicator/ IELTS Online and TOEFL Home Editions are NOT accepted).

Master of Arts in Educational Counselling

MA(EC) | A1M094 (1-year Full-time)
 (Part-time mode will not be offered in 2024/25)
 Programme Leader: Dr LO Wing Ka Julia
 Enquiry Hotline: (852) 2948 7683
 ✉️ maec@eduhk.hk



👉 www.eduhk.hk/ec
 (Please refer to the website for the most up-to-date programme information)

Special Features

- Extensive training in both modern and post-modern theories of counselling
- 80 to 100 hours of supervised counselling practicum
- Innovative approaches and strategies to address the needs of students in kindergartens, primary and secondary schools, and post-secondary institutions
- Focus on the collaboration between school and community
- Emphasis on counselling ethics, case assessment, conceptualisation, and reflective counselling practice
- An outreach model of learning: student practicum will be arranged in satellite counselling sites, such as CCC Mong Man Wai College, Po Leung Kuk Ma Kam Ming College, CCC Kei Wan Primary School, Tsuen Wan Trade Association Primary School, Ebenezer School, St James' Settlement, Hong Kong Christian Shuen Tao Church (Mongkok), etc, in collaboration with NGOs, and primary and secondary schools

Participants

Professionals in education and social services sectors who wish to embark on specialised training in educational counselling. The programme aims to help participants establish their professional membership in professional counselling associations, such as the Hong Kong Professional Counselling Association, eventually leading to the status of certified counsellors.

Programme Structure

Course	Credit Points
Core Courses <ul style="list-style-type: none"> • Counselling Theories, Helping Process and Skills • Child and Adolescent Counselling • Counselling Ethics 	24 (4cps/ course)
Specialist Courses <ul style="list-style-type: none"> • Group Work • Contemporary Issues in Child and Adolescent Development • Psychoeducational Assessment and Testing 	
Practicum Training <ul style="list-style-type: none"> • Practicum I • Practicum II 	6 (3cps/ course)
Total	30

Medium of Instruction

The medium of instruction is mainly English. Chinese is adopted as the language of instruction for practicum training.



Entrance Requirements

Applicants should normally:

- Hold a recognised Bachelor's degree
- Preferably have some background in the fields of education or guidance and counselling, in either the school or community setting

Meet the English proficiency requirements of the University Shortlisted applicants may be required to attend an interview or a test.

Applicants whose entrance qualification is obtained from an institution in non-English speaking system should normally fulfil one of the following minimum English proficiency requirements:

- IELTS 6.0; or
- TOEFL score of 80 (internet-based test); or
- Band 6 in the Chinese Mainland's College English Test (CET) (a total score of 430 or above and the test result should be valid within two years); or
- Grade C or above in GCSE / GCE OL English; or
- Other equivalent qualifications.

The results of IELTS/TOEFL provided **should be within two years** (i.e., for the 2024/25 intake, the IELTS/TOEFL test must be obtained on or after 1 Jan 2022); and

The results of IELTS/TOEFL **should be "taken in test centres"** (i.e., tests taken online such as IELTS Indicator/IELTS Online and TOEFL Home Editions are NOT accepted).

Tuition Fee

The tuition fee for the whole programme is HK\$149,400 (HK\$4,980 per credit), which is provisional and subject to adjustment. Tuition fees paid are normally not refundable or transferable. Extension fees will be charged to students who have to extend their studies beyond the normal duration (i.e. 1 year for full-time and 2 years for part-time).

Class Time and Venue

To fully utilize the University's resources, classes for MA(EC) programme will be scheduled between 8:30am and 9:20pm on weekdays and 8:30am to 6:20pm on Saturdays, with possible scheduling of combined classes for programmes/courses of different modes of study (including full-time, part-time, mixed mode etc.), at the University's Tai Po Campus, Tseung Kwan O Study Centre and North Point Study Centre.

“ After being a professional accountant for over 20 years, I treasured the experience of the MA(EC) programme, and started my second career after my graduation in 2018. I loved the practicum arrangement, and had the chance to offer counselling services to everybody from children to adults, in a secondary school, an NGO, and a SEN centre at EdUHK. I was also able to work as a part-time research assistant at EdUHK whilst I studied the MA(EC). I was lucky to be involved in projects for students with special educational needs.

After graduating, I started a new journey at an NGO, Enlighten Hong Kong Limited, which aims to support those affected by epilepsy. I now provide counselling services to members and their caregivers to soothe the emotional distress caused by epilepsy. I am so happy that I can use the things I learned in the MA(EC) programme in my new position ”

Celia Tam

Alumna, MA(EC)

Outreach Officer of Enlighten Hong Kong Limited

Master of Arts in Global Higher Education

MA(GlobalHE) | A1M110 (1-year Full-time)/
C2M040 (2-year Part-time)

Programme Leader: Prof Anatoly OLEKSIYENKO

Associate Programme Leader: Dr XIONG Weiyang

Enquiry Hotline: (852) 2948 8548

✉ maglobalhe@eduhk.hk



✉ www.eduhk.hk/maglobalhe

(Please refer to the website for the most up-to-date programme information)

Introduction

The demand for world-class university research and education has been growing in Hong Kong and the region over the last decade. This is because Chinese intellectuals and professionals are seeking a prominent position and influence in knowledge production, innovation, and talent development globally. Expectations are on the rise for an improved understanding of the roles and responsibilities of university educators and administrators in enhancing their programmes with a higher return on investment in cross-border mobility and exchange, international research and development, and globally influential learning designs.

The Master of Arts in Global Higher Education [MA(GlobalHE)] programme will create an advanced and comprehensive platform for the global engagement of aspiring and established professionals who have dedicated their careers to higher education institutions.

Programme Aims

The MA(GlobalHE) aims to equip students with a better understanding of contexts, cultures, and conditions in developing internationalised, respectful, and intellectually invigorating campuses. This also includes enhancing their creative, innovative, and entrepreneurial competencies in the process of multidisciplinary, inquiry-led, collaborative initiatives that are focused on international policy-making, programme development, project management, research, and teaching support.



Programme Structure

Students are required to complete a total of 24 credits covering core and elective courses to fulfil the graduation requirements. One-year full-time students are expected to take four courses in the first semester (e.g., two core + two elective) and four courses (two core + two elective) in the second semester. Two-year part-time students are expected to take two courses per semester over their two years of study. Students will be required to take all courses onsite in Hong Kong.

Course	Credit Points
Core courses (3 credit points/course)	12
• Foundations of Global Higher Education	3
• Comparative Studies in Global Higher Education	3
• Administration and Management in World-Class Universities	3
• Equity and Social Justice in Global Higher Education	3
Electives (3 credit points/course)*	12
• Academic Research and Writing in Higher Education	3
• Leadership in Higher Education	3
• Higher Education for International Development	3
• Global Governance and Policy Making in Higher Education	3
• Entrepreneurialism and Interprofessional Learning in Higher Education	3
• Independent Project in International Higher Education	3
Total	24

Individual electives may not be offered every year

Medium of Instruction

The medium of instruction and assessment is English.

Tuition Fee

The tuition fee for the whole programme is HKD140,800, which is provisional and subject to adjustment. Tuition fees paid are normally not refundable or transferable. Extension fees will be charged to students who extend their studies beyond the normal duration (i.e. 1 year for full-time and 2 years for part-time).

Entrance Requirements

- Applicants should normally hold a recognised bachelor's degree or equivalent.
- Applicants whose entrance qualification is obtained from an institution in a non-English speaking system should normally fulfil one of the following minimum English proficiency requirements:
 - overall score of IELTS 6.0 (academic version) within two years; or
 - Grade C or above in GCSE / GCE OL English; or
 - a TOEFL score of 80 (internet-based test taken in test centres) with two years; or
 - Band 6 in the Chinese Mainland's College English Test (CET) with a total score of 430 or above, and the test result should be valid within two years; or
 - other equivalent qualifications.

The results of IELTS/TOEFL provided **should be within two years** (i.e., for the 2024/25 intake, the IELTS/TOEFL test must be obtained on or after 1 Jan 2022); and

The results of IELTS/TOEFL **should be "taken in test centres"** (i.e., tests taken online such as IELTS indicator/ IELTS Online and TOEFL Home Editions are NOT accepted).

Shortlisted applicants may be required to attend an interview.

Master of Arts in Global Studies in Education

MA(GSE) | A1M107 (1-year Full-time)/
C2M037 (2-year Part-time)

Programme Leader: Dr GAO Fang

Enquiry Hotline: (852) 2948 8836

✉ magse@eduhk.hk



👉 www.eduhk.hk/magse

(Please refer to the website for the most up-to-date programme information)

Introduction

Global studies in education is an interdisciplinary field which considers broad and particular questions involving the relationship between globalisation and education.

Education is a worldwide social phenomenon. Global studies emphasise the relationship between the global and the local, to understand how global experiences shape local lives across diverse societies, and how local, national, and regional actors respond in turn to global processes.

The world faces many challenges today, from climate and health disasters, to social and regional conflicts, as well as mass migration – all giving rise to a sense of global instability.

Such processes have a significant impact on educational policies and curriculum, and the opportunities of people across societies. Reflecting on positive educational and social futures can empower students as leaders.

Programme Aims

Globalisation has significantly changed education. Educators need to understand and critically respond to the challenges and opportunities presented by processes related to globalisation.

The MA in Global Studies in Education aims to equip students with academic and professional knowledge and skills related to the field. The programme also aims to help students develop academic thinking and communication skills that will be of value in a variety of future professional and academic contexts.

Programme Structure

Participants are required to complete a total of 8 courses (24 credit points) for graduation.

Course	Credit Points
Core courses (3 credit points/course)	
<ul style="list-style-type: none"> Research and Academic Writing in Global Studies in Education Local Education in a Globalized World Contemporary Global Challenges Key Issues in Education in Global Context 	12
Elective Courses (4 out of 6 courses)#	
<ul style="list-style-type: none"> Global Governance and Education Policy Inequality in Education Higher Education and International Development Education Futures Independent Project in Global Studies in Education Histories of Modernization and Education Development 	12
Total	24

The elective courses listed above may not be offered every year

Programme Curriculum

The programme is managed by the Department of International Education. The department has an excellent track record of providing high-quality teaching and research in the areas of global studies in education, international and comparative education, educational philosophy and theory, life and values education, and in related areas.

Medium of Instruction

The medium of instruction and assessment is English.

Tuition Fee

The tuition fee for the whole programme is HK\$140,800, which is provisional and subject to adjustment. Tuition fees paid are normally not refundable or transferable. Extension fees will be charged to students who extend their studies beyond the normal duration (i.e. 1 year for full-time and 2 years for part-time).



Entrance Requirements

Applicants should normally hold a recognised bachelor's degree or equivalent.

Applicants should submit a Personal Study Statement of 500-1,000 words articulating their interest in the programme.

Applicants should invite two referees to complete the Referee's Report. Please input information of the referees through the "Confidential Report/References" section in the online application system. The University will send invitation emails to the referees to complete the online referee's report.

Applicants whose entrance qualification is obtained from an institution in a non-English speaking system should normally fulfil one of the following minimum English proficiency requirements:

- overall score of IELTS 6.0 (academic version); or
- Grade C or above in GCSE/GCE OL English; or
- a TOEFL score of 80 (internet-based test); or
- Band 6 in the Chinese Mainland's College English Test (CET) with a total score of 430 or above (the test should have been taken no more than two years prior to the submission of this application); or
- other equivalent qualifications.

The results of IELTS/TOEFL provided **should be within two years** (i.e., for the 2024/25 intake, the IELTS/TOEFL test must be obtained on or after 1 Jan 2022); and

The results of IELTS/TOEFL **should be "taken in test centres"** (i.e., tests taken online such as IELTS indicator/ IELTS Online and TOEFL Home Editions are NOT accepted).

Shortlisted applicants may be required to attend an interview.

Master of Arts in Leading Experiential Learning Activities

MA(LELA) | A1M102 (1-year Full-time)/
C2M033 (2-year Part-time)
Programme Leader: Dr KONG Ho Man Raymond
Enquiry Hotline: (852) 2948 8879
✉ malela@eduhk.hk



👉 www.eduhk.hk/malela
(Please refer to the website for the most up-to-date programme information)

Introduction

This programme aims to equip teachers and professionals with the knowledge and skills to lead experiential learning activities. It includes key disciplinary areas such as pedagogical design, curriculum planning, management and leadership, as well as policy analysis. It will enable you to apply your learning to authentic educational contexts promoting the whole person development of young people.

Programme Aims

The programme enables students to:

- Attain a deeper understanding of the theoretical framework of experiential learning activities and whole person development;
- Apply up-to-date knowledge, skills and practical experience related to experiential learning activities in schools or other education institutions for promoting young people's whole person development;
- Build professional capacity in carrying out action research and projects concerning experiential learning activities and whole person development; and
- Develop a quality mindset through critical reflection of experiential learning activities and whole person development.

Programme Structure

The programme comprises 8 courses, including 4 core courses and 4 elective courses (3 credit points/course).

Course	Credit Points
Core	
<ul style="list-style-type: none"> • Experiential Learning Theories & Practices • Policy Analysis for Leading Experiential Learning • Planning for an Experiential Learning Project: Approaches and Methods • Development of an Experiential Learning Project: Action and Reflection 	12
Elective Courses (Choose 4 courses)*	
<ul style="list-style-type: none"> • Service-Learning for Whole Person Development of Children and Adolescents • Outdoor and Adventure Education • Experiential Learning Activities for Career and Life Development Education • An Experiential Journey of Embodied Learning: Civic Education • Environment, Space and Design for Inspiring Experiences • Managing Non-local Experiential Learning Programmes* • Curriculum and Assessment in Experiential Learning • Collaborative Partnerships in Experiential Learning 	12
Total	24

The elective courses listed above may not be offered every year and are subject to change. For details about the courses offered, please refer to the programme website.

* Students enrolled in this course are responsible for all expenses related to overseas travel.

Programme Curriculum

- Practical orientation with a curriculum emphasis on action research, field study, and context-based approaches
- Learning experiential learning through an experiential learning pedagogy which emphasises processes, discoveries and reflections
- Strong focus on whole person development and non-formal education
- Multi-disciplinary and inter-disciplinary in nature with a specialist focus to equip teachers and professionals who are currently (or will be) responsible for leading extra-curricular activities, Other Learning Experiences (OLE), Experiential Learning/Life-wide Learning activities, or student development work in schools and other institutions

Medium of Instruction

The medium of instruction is Chinese.

Tuition Fee

The tuition fee is HK\$ 144,120 which is provisional and subject to adjustment. Tuition fees paid are normally not refundable or transferable. Extension fees will be charged to students who have to extend their studies beyond the normal duration.



Entrance Requirements

Applicants should normally hold a recognised bachelor's degree or equivalent.

Applicants whose entrance qualification is obtained from an institution in a non-English speaking system should normally fulfil one of the following minimum English proficiency requirements:

- IELTS 6.0 ; or
- Grade C or above in GCSE/GCE OL English; or
- TOEFL score of 80 (internet-based test); or
- Band 6 in the Chinese Mainland's College English Test (CET) with a total score of 430 or above and the test result should be valid within two years; or
- Other equivalent qualifications.

The results of IELTS/TOEFL provided **should be within two years** (i.e., for the 2024/25 intake, the IELTS/TOEFL test must be obtained on or after 1 Jan 2022); and

The results of IELTS/TOEFL **should be "taken in test centres"** (i.e., tests taken online such as IELTS indicator/ IELTS Online and TOEFL Home Editions are NOT accepted).

Applicants should have attained one of the following Chinese language proficiency requirements:

- Level 3 or above in Chinese Language from the Hong Kong Diploma of Secondary Education (HKDSE); or
- Grade D or above in Chinese Language from the Hong Kong Certificate of Education Examination (HKCEE); or
- Grade E or above in Chinese Language & Culture (Advanced Supplementary level, AS-level) from the Hong Kong Advanced Level Examination (HKALE).
- Other proof of Chinese language proficiency will be considered on an individual merit basis.

Applicants should be proficient in Cantonese.

Master of Arts in Leading Innovative Learning Organizations

MA(LILO) | A1M099 (1-year Full-time)/
C2M030 (2-year Part-time)

Programme Leader: Dr Hayes TANG

Enquiry Hotline: (852) 2948 8476

✉ lilo@eduhk.hk



👉 www.eduhk.hk/lilo

(Please refer to the website for the most up-to-date programme information)

Introduction

The Master of Arts in Leading Innovative Learning Organizations (LILLO) is Hong Kong's first-ever master's degree specialising in innovation, leadership and education.

The programme empowers future educational leaders to innovate and improve leadership, and gives participants an **international** understanding of global best practices of leadership and educational innovation. The programme features innovative learning, professional networking, as well as flexible delivery.

Participants will develop an **entrepreneurial** mindset to take advantage of new opportunities to innovate at their school or organization. The LILLO experience will enable them to apply the innovative ideas locally and envisage a **future-oriented** learning organization.

Special Features

- Emphasis on concerns of practice
- Innovative learning including intensive courses, blended learning, virtual learning, mentorship and site-based study
- Strong professional networks with innovators and experienced educational leaders
- Five taught courses by intensive residential teaching and learning; and three field-based courses through blended and flexible learning
- Opportunity of claiming Cambridge leadership qualification

Working with

 **Cambridge Assessment
International Education**
Professional Development Centre





Participants

- Serving or aspiring leaders in educational services providers and schools including Curriculum Leaders/ Curriculum Directors, Teacher Leaders, Panel Chairs, Vice Principals, Special Educational Needs Coordinators, Start-up Founders/Co-founders, Leaders in Youth-related/Extramural Educational Organizations/Social Enterprises, and Professional Development Trainers.
- Outstanding graduates with less working experience will also be considered and guided for mentorship/ internship.

Programme Aims

The programme will equip serving or aspiring educational leaders with the capacity to:

- design strategies that enhance organizational learning;
- stimulate innovation and sustainability;
- engage teams in improvement-oriented professional learning;
- leverage diversity to support organizational learning and innovation; and
- apply systems perspectives to improving their work.

Medium of Instruction

The medium of instruction is English.

Tuition Fee

The tuition fee is HKD146,000 which is provisional and subject to adjustment. Tuition fees paid are normally not refundable or transferable. Extension fees will be charged to students who have to extend their studies beyond the normal duration (i.e. 1 year for full-time and 2 years for part-time).

Entrance Requirements

Applicants should normally hold a recognised bachelor's degree or equivalent, have three years of professional experience in schools or educational organizations, and leadership experience. Shortlisted applicants may be required to attend an interview.

Applicants whose entrance qualification is obtained from an institution in a non-English speaking system should normally fulfil one of the following minimum English proficiency requirements:

- IELTS 6.0 ; or
- Grade C or above in GCSE/GCE OL English; or
- a TOEFL score of 80 (internet-based test); or
- Band 6 in the Chinese Mainland's College English Test (CET) (a total score of 430 or above and the test result should be valid within two years);
- Pass in Test for English Majors-band 8 (TEM-8); or
- Other equivalent qualifications.

The results of IELTS/TOEFL provided **should be within two years** (i.e., for the 2024/25 intake, the IELTS/TOEFL test must be obtained on or after 1 Jan 2022); and

The results of IELTS/TOEFL **should be "taken in test centres"** (i.e., tests taken online such as IELTS indicator/ IELTS Online and TOEFL Home Editions are NOT accepted).

Master of Arts in Positive Psychology in Education

MA(PPE) | A1M100 (1-year Full-time)/
C2M031 (2-year Part-time)

Programme Leader: Dr MA Ka Yin Lawrence

Associate Programme Leader: Dr CHUNG Yiu Bun

Enquiry Hotline: (852) 2948 8544

✉ mappe@eduhk.hk



👉 www.eduhk.hk/mappe

(Please refer to the website for the most up-to-date programme information)

Introduction

The programme aims to provide students with a comprehensive knowledge of positive psychology, enabling them to integrate the science and application of positive psychology in educational and community settings.

The programme introduces the theoretical foundations and practical applications of positive psychology in education. In it, students learn how to assess and enhance their own well-being and how to share positive psychological practices with others. They also learn how to design, implement, and evaluate evidence-based positive psychology interventions and positive education programmes.

Students first learn how to be positive themselves, then how to guide others to be positive, and finally how to develop and sustain a positive environment and culture.

Programme Aims

Upon successful completion of the programme, students should be able to:

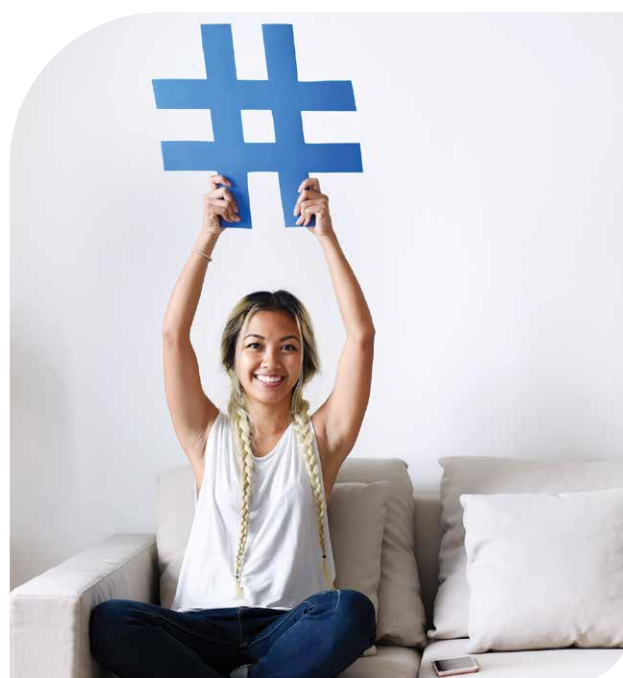
- demonstrate a comprehensive understanding of professional knowledge in positive psychology and positive education;
- utilise major positive psychological theories/principles to identify and analyse factors influencing well-being through different perspectives;
- integrate major theories/principles of positive psychology to innovatively and sensibly address real life issues and challenges in educational and community settings;
- evaluate theoretical foundations and practical applications of positive psychology and positive education using rigorous scientific principles and ethical standards; and
- design and implement professional, effective, and ethical positive psychology interventions and positive education programmes in local, regional, and global contexts.

Special Features

- The programme is one of the first in Hong Kong to address the interplay between positive psychology and positive education.
- The programme is one of the first in Asia to provide training in positive psychology and positive education.
- The programme emphasises the integration of theory and practice.
- Our programme offers credit-bearing training on mental health first aid by qualified instructor(s). Students who complete the training module, which is subject to quota, can become qualified mental health first aiders, with a Certificate issued by the Mental Health Association of Hong Kong.

Participants

Bachelor degree holders, especially those who wish to build a career or pursue further studies in areas of psychology and education



Programme Structure

The programme comprises 24 credit points (cps), which can typically be earned within one year of full-time studies or two years of part-time studies. Students are required to complete 5 core courses and 3 elective courses for graduation. Each course carries 3 cps. The list of available courses is shown below:

Course	Credit Points
Core Courses <ul style="list-style-type: none"> Positive Psychology Positive Education Positive Psychology Interventions Engagement, Meaning, and Happiness in Learning and Teaching Research Methods in Positive Psychology 	15
Elective Courses (choose 3 out of the below courses) <ul style="list-style-type: none"> Mindfulness in Education Parenting and Child Flourishing Mental Health Support for Young People Capstone Project Cultural Perspectives on Well-being Human Development across the Lifespan[^] Stress and Coping[^] Interpersonal Communication Skills[^] 	9
Total	24

[^] This is a cross-listed course with the MSocScP(SCS) programme

Programme Curriculum

The core courses of the programme provide systematic training in both positive psychology and positive education. Grounded in a theory-practice integrated framework, the core courses cover the theoretical foundations and practical applications of positive psychology and positive education. In addition, students take a general course on research methods in psychology that allows them to evaluate research evidence in positive psychology and education by using scientific principles.

The elective courses of the programme give students the opportunity to extend their knowledge and skills and allow them to apply positive psychology and positive education in school and family settings. Students are trained in how to make well-being interventions, enabling them to apply the knowledge learnt in the classroom to an authentic environment.

To help students integrate what they have learnt in different courses, they are offered an opportunity to develop, plan, and execute an individual inquiry-based project under the guidance and supervision of a faculty member to examine specific problems or questions in positive psychology and positive education.

Medium of Instruction

The medium of instruction is English.

Tuition Fee

The tuition fee is HK\$139,920 which is provisional and subject to adjustment. Tuition fees paid are normally not refundable or transferable. Extension fees will be charged to students who have to extend their studies beyond the normal duration (i.e. 1 year for full-time and 2 years for part-time).

General Admission Requirements

Applicants should hold a recognised Bachelor's degree.

Applicants whose entrance qualification is obtained from an institution in a non-English speaking system should normally fulfil one of the following minimum English proficiency requirements:

- IELTS 6.0; or
- Grade C or above in GCSE/GCE OL English; or
- TOEFL score of 80 (internet-based test); or
- Band 6 in the Chinese Mainland's College English Test (CET) (a total score of 430 or above and the test result should be valid within two years); or
- Other equivalent qualifications.

The results of IELTS/TOEFL provided **should be within two years** (i.e., for the 2024/25 intake, the IELTS/TOEFL test must be obtained on or after 1 Jan 2022); and

The results of IELTS/TOEFL **should be "taken in test centres"** (i.e., tests taken online such as IELTS indicator/ IELTS Online and TOEFL Home Editions are NOT accepted).

Master of Science in Educational Speech-Language Pathology and Learning Disabilities

MScESLPLD | A2M080 (2-year Full-time - 5 semesters)

Programme Leader: Dr KAM Chi Shan Anna

Enquiry Hotline: (852) 2948 7689

✉ eslpld@eduhk.hk



✉ www.eduhk.hk/eslpld

(Please refer to the website for the most up-to-date programme information)

Special Features

- The first master's programme in Hong Kong that studies both speech-language pathology and learning disabilities to offer professional training for the next generation of speech-language pathologists
- The Programme has been fully endorsed by the Hong Kong Institute of Speech Therapists (www.hkist.org.hk). Graduates of the programme are eligible to apply to be "Member of Register of Speech Therapists accredited by the Department of Health"
- Curriculum follows the standards of the American Speech-Language-Hearing Association (ASHA, www.asha.org), with additional components to cater for the needs of different educational contexts and Chinese communities
- A unique, innovative and comprehensive postgraduate training programme – built on a dual-core framework (speech-language pathology and learning disabilities), grounded in contemporary research and evidence-based practices, focused on reflection and inquiry
- Purpose-built clinical research unit with state-of-the-art facilities for training, client/community services and research
- Extensive practicum component, supervised by qualified speech-language pathologists in Hong Kong and/or nearby regions

- Programme managed by the Department of Special Education and Counselling, the only affiliated society of the International Association of Logopedics and Phoniatrics (IALP, www.ialp.info) in China
- Students have the opportunity to participate in the annual European Speech-Language Therapy Summer School
- The MScESLPLD programme is an eligible programme of the UGC's "Targeted Taught Postgraduate Programmes Fellowships Scheme" for 2024 intake. Meritorious students may receive a maximum of HK\$120,000 to subsidise their tuition fees



Participants

Those who wish to embark on a professional career in speech-language pathology



Programme Structure

The programme comprises 81 credit points (cps) and requires two years of full-time study. Participants will be required to study a full load of subjects with 12-18 cps per semester. Courses will be delivered face-to-face, involving a combination of lectures and tutorials.

Course	Credit Points
Professional Study <ul style="list-style-type: none"> Medical Aspects of Special Education, Communication Disorders and Learning Disabilities Acoustics for Speech, Language, Hearing and Learning Educational Counselling, Therapeutic Process and Teaching Pedagogy Phonetics and Phonology for Education Language Development Speech, Language and Communication Disorders Bilingualism and Bilingual Education Structure of Chinese for Education Audiology and Aural Rehabilitation in Educational Settings Assessment and Intervention for Speech, Language, Communication and Learning Learning Disabilities, Reading and Writing Disorders Language Disorders in Children and Adolescents Supporting Students with Social, Emotional, Behavioural and Developmental Disabilities in the Classroom Advanced Studies I – Acquired Language Disorders and Dysphagia Advanced Studies II – Acquired Speech Disorders Advanced Studies III – School-based SLP, Craniofacial Anomalies and AAC 	48
Practicum <ul style="list-style-type: none"> Practicum I/II Advanced Practicum in Adult and Educational Settings I/II 	21
Research Methods <ul style="list-style-type: none"> Research Methods and Evidence-based Practice Advanced Research Methods 	6
Project <ul style="list-style-type: none"> Evidence-based Capstone Project 	6
Total	81*

* Each course carries 3 cps, except the Practicum Courses (3-6 cps) and Evidence-based Capstone Project (6 cps)

Programme Curriculum

The curriculum is modelled on that of the American Speech-Language-Hearing Association (ASHA), the professional and credentialing association for audiologists, speech-language pathologists and scientists in the field. The programme is more than just a medical study of speech-language pathology; it is designed to focus on supporting students in educational settings. The integration of the two disciplines of speech-language pathology and learning disabilities makes this programme a unique, innovative and comprehensive postgraduate training.

Professional Study includes a spectrum of professional courses to help participants build a strong knowledge of typical and disordered human communication, learning and swallowing processes in individuals (from infancy to late adulthood), and principles and methods of assessment and intervention.

Practicum is an integral part of the MScESLPLD curriculum, and a bridge between classroom learning and the realities of practice. Practicum sessions will be conducted to give participants the opportunities to apply subject knowledge, assessment and interventions skills. Participants will have access to different facets of the community, and work with diverse client communities.

Research Methods provides an in-depth study of research design, methods and applications to foster participants' critical thinking and problem-solving. Participants will undertake research and investigatory analysis that help in their research project and future professional practice.

The **Evidence-based Capstone Project** enables participants to work on a specialised topic related to their study in the MScESLPLD under the guidance of a supervisor. It requires participants to demonstrate their subject knowledge and skills through developing an individual project. This will help participants develop research and academic writing skills, as well as the scientific attitudes and values required to advance in their future career.

Medium of Instruction

The medium of instruction is English.

Tuition Fee

The tuition fee for the whole programme is HK\$525,690 (HK\$6,490 per credit) which is provisional and subject to adjustment. Tuition fees paid are normally not refundable or transferable. Needy local students may apply for financial assistance scheme from the government or from non-government organisations. Extension fees will be charged to students who have to extend their studies beyond the normal duration.

Entrance Requirements

1. Applicants should hold a recognised Bachelor's degree and/or a postgraduate diploma in education or other disciplines related to psychology, linguistics, speech and hearing sciences or other disciplines the selection panel deems appropriate.
2. Applicants whose entrance qualification is obtained from an institution in a non-English speaking system should have attained one of the following minimum English proficiency requirements:
 - IELTS 6.0 ; or
 - Grade C or above in GCSE/GCE OL English; or
 - a TOEFL score of 80 (internet-based test); or
 - Band 6 in the Chinese Mainland's College English Test (CET) (a total score of 430 or above and the test result should be valid within two years); or
 - Other equivalent qualifications.
3. Applicants should have attained one of the following Chinese language proficiency requirements:
 - Level 3 or above in Chinese Language from The Hong Kong Diploma of Secondary Education (HKDSE); or
 - Grade E or above in Chinese Language from The Hong Kong Certificate of Education Examination (HKCEE); or
 - Grade E or above in Chinese Language & Culture (Advanced Supplementary level, AS-level) from The Hong Kong Advanced Level Examination (HKALE); or
 - Other proof of Chinese language proficiency will be considered on an individual merit basis.
4. Applicants should be proficient in Cantonese.

The results of IELTS/TOEFL provided **should be within two years** (i.e., for the 2024/25 intake, the IELTS/TOEFL test must be obtained on or after 1 Jan 2022); and

The results of IELTS/TOEFL **should be "taken in test centres"** (i.e., tests taken online such as IELTS indicator/IELTS Online and TOEFL Home Editions are NOT accepted).



3. Applicants should have attained one of the following Chinese language proficiency requirements:
 - Level 3 or above in Chinese Language from The Hong Kong Diploma of Secondary Education (HKDSE); or
 - Grade E or above in Chinese Language from The Hong Kong Certificate of Education Examination (HKCEE); or
 - Grade E or above in Chinese Language & Culture (Advanced Supplementary level, AS-level) from The Hong Kong Advanced Level Examination (HKALE); or
 - Other proof of Chinese language proficiency will be considered on an individual merit basis.
4. Applicants should be proficient in Cantonese.

Shortlisted applicants are required to attend an admission interview and take a test. The success of the application will depend heavily on the performance of the interview and the test.



“ After graduating I work as a speech therapist at an NGO. I am now responsible for reaching out to different kindergartens to help the preschoolers overcome their communication and speech problems.

The most unforgettable moment was when a child greeted me using a full sentence after a summer vacation. Just one year ago he was not able to say even a single word. After going through therapy his improvement was incredible.

At University, I had amazing placement opportunities. I met an elderly woman who had swallowing difficulties. Although I tried many different treatment approaches with her, I made very little progress. My supervisor, Ms Esther Kwok helped me think through other possible causes; how was her everyday eating habits, if she could manage to swallow her medicine, whether she had family support, and whether she is receiving the necessary nutritional intake based on her current diet?

I find it incredibly meaningful to help those in need, especially during the difficult times of their lives. It means a lot to the clients as well as their families. I think the strongest attribute of this programme is that it addresses those with learning disabilities. Working at an NGO that emphasises holistic care, I have to work with educational psychologists, occupational therapists, physical therapists, social workers and special child care workers. This programme prepared me with a collaborative mindset so that I can customise the best therapeutic plan for my clients.

The knowledge and skills are highly transferrable internationally. I passed the clinical certification examination for Speech-language and Audiology Canada. This means I am also qualified to practice as a speech language pathologist in Canada. ”

Jessica Huen

Alumna, MScESLPLD
Speech Therapist

“ I am sure all MScESLPLD students find practicum most challenging but also most fulfilling. I loved the chance to help a wide range of clients at the Hospital Authority and various NGOs, from children to adults to the elderly. I served clients with swallowing difficulties, speech problems, and students with special educational needs. Every client is unique, as well as their family. With help from my supervisors, I approached each individual in a unique way. My supervisor Ms Polly Lau was instrumental to how I approached this.

I had a great summer as I was given the chance to join a Speech Language Therapy Summer School in Italy. Our team won the Best Paper Poster Presentation Award out of the 21 participating universities from Europe, America and Asia. We demonstrated a unique way to teach Cantonese, to pay attention to the six contrastive lexical tones of Cantonese. ”

Zandra Mok

Alumna, MScESLPLD
Speech Therapist

Master of Social Sciences in Psychology (Schools and Community Settings)

MSocScP(SCS) | A1M083 (1-year Full-time)/
C2M017 (2-year Part-time)

Programme Leader: Dr WANG Jie

Associate Programme Leader: Dr POON Kai Tak Ivan

Enquiry Hotline: (852) 2948 8544

✉ msocscp@eduhk.hk



👉 www.eduhk.hk/msocscp
(Please refer to the website for the most up-to-date programme information)

Special Features

- Unique Master's degree programme in Psychology designed for non-psychology degree holders and concentrated on schools and community settings
- Excellent education in psychological principles, application, and research training
- Option to work on an independent research project and accordingly, produce a dissertation under the close supervision of our teaching team
- Choice of elective courses such as Educational Psychology, Health Psychology, Stress and Coping, Interpersonal Communication Skills, etc.
- Online bridging course for participants with no prior formal training in psychology
- Recognition of prior learning via credit transfer[#]
- Gateway to careers and further studies in the fields of psychology and education such as
 - Master/PhD in Clinical Psychology
 - Master/PhD in Educational Psychology
 - MPhil/PhD in Psychology
 - Master/PhD in Industrial and Organizational Psychology
 - Doctor of Education
- Graduates can apply for membership of Hong Kong Psychological Society (HKPS)*

* Subject to approval by the HKPS for individual applications.

Subject to approval



Prospective Students

Non-psychology degree holders, especially educators or other community workers, who wish to embark on a path to professional training and career development in psychology

Study Venue and Time

Full-time students are expected to complete the programme in 1 year, while part-time students are expected to complete the programme in 2 years. Full-time students will attend 4 classes per week and part-time students will attend 2 classes per week, usually held on weekday evenings and Saturdays at the Tai Po Campus. Classes may also be held on weekday or weekend at the Tseung Kwan O Study Centre / North Point Study Centre / Kowloon Tong Satellite Study Centre as decided by the University.

Tuition Fee

The tuition fee for the whole programme is HK\$151,200, i.e., HK\$4,200 per credit, which is provisional and subject to adjustment (for those who are required to take the bridging course: HK\$163,800). Students who need to extend their studies beyond the normative duration (i.e., 1 year for full-time and 2 years for part-time) would be liable to extension fees.

Entrance Requirements

Applicants should hold a recognised Bachelor's degree and preferably have introductory psychology training at a recognised tertiary institution. Shortlisted applicants may be required to attend an interview/a test. Applicants whose entrance qualification is obtained from an institution in a non-English speaking system should fulfil one of the following minimum English proficiency requirements:

- IELTS 6.0; or
- Grade C or above in GCSE/GCE OL English; or
- a TOEFL score of 80 (internet-based test); or
- other equivalent qualifications.

The results of IELTS/TOEFL provided **should be within two years** (i.e., for the 2024/25 intake, the IELTS/TOEFL test must be obtained on or after 1 Jan 2022); and

The results of IELTS/TOEFL **should be “taken in test centres”** (i.e., tests taken online such as IELTS indicator/ IELTS Online and TOEFL Home Editions are NOT accepted).

Medium of Instruction

The medium of instruction is English.

“ After working as a frontline teacher, I wanted to study psychology to gain a deeper understanding of how our brains learn and to examine ways of increasing our ability to comprehend and retain knowledge. This programme has equipped me with a well-rounded background knowledge of psychology as well as research skills to pursue professional training in educational psychology. ”

Miss Elaine Tang

Educational Psychologist
Alumna of MSocScP(SCS)

Master of Teaching

MTeach | A1M087 (1-year Full-time)/
C2M019 (2-year Part-time)

Programme Leader: Dr ZHANG Yuefeng Ellen
Enquiry Hotline: (852) 2948 8657 / 2948 8698

✉ mteach@eduhk.hk



➤ www.eduhk.hk/mteach
(Please refer to the website for the most up-to-date programme information)

Programme Structure

Participants are required to complete a total of 8 courses (24 credit points) for graduation

Course	Credit Points
Core Courses (3 credit points/course)	
<ul style="list-style-type: none"> Teaching Strategies for Enhancing Student Learning Teacher Leadership and School Improvement Learning in the Inclusive Classroom Methods in Research for Learning Practitioner-based Research Project 	15
Specialisations# 3 courses (3 credit points/course) from one of the following specialisations:	
<ul style="list-style-type: none"> Curriculum Development Early Childhood Education and Family Studies Special Education 中國語言及文學的學與教 (Learning and Teaching of Chinese Language and Literature)* English Language Education Teaching Greater China Studies in Liberal Studies Curriculum* Teaching Physical Education - An Advanced Study* 	9
Total	24

* For full-time study only

Individual specialisations may not be offered every year

Special Features

- The very first Master of Teaching Programme in Hong Kong to focus on pedagogical practices at an advanced level
- “To identify teachers in the heart of quality education” – a mission of fostering teacher leaders who can rally school teams on reforms in changing school contexts
- Latest research findings and evidence-based teaching practices and pedagogies adopted as learning materials
- Delivered by learner-oriented approach which caters for participants’ diverse needs, despite of their different school work experience
- Nurtures teacher leaders via reflection-in-practice and reflection-through-practice
- Supports curriculum reform and school-based work experience
- The practitioner-based research project is the programme highlight, serving to make a difference in learning through practice, reflection, and evaluation
- Designed and implemented by a team of experts and subject specialists, with professional qualifications to provide strong scaffolding with their expertise
- Managed by the Department of Curriculum and Instruction. The department has a track record of providing high-quality teaching and research in the areas of curriculum, teaching, assessment, and teacher professional development



Specialisations[#]

In 2024/25, the Master of Teaching Programme will offer the following specialisations. Participants can choose one of the followings:

- English Language Education
- 課程發展 (Curriculum Development)
- 中國語言及文學的學與教 (Learning and Teaching of Chinese Language and Literature) (for Full-time study only)

The following specialisations will be suspended in 2024/25:

- Early Childhood Education and Family Studies
- Special Education
- Teaching Greater China Studies in Liberal Studies Curriculum (for Full-time study only)
- Teaching Physical Education - An Advanced Study (for Full-time study only)

[#] Individual specialisations may not be offered every year

* For full-time study only

Participants

This programme is suitable for fresh graduates and teachers at different stages of their careers, interested in pursuing advanced studies preparing them for future school leadership.

Recognition of Prior Learning

Applicants may apply for credit transfer in the Master of Teaching Programme for up to 9 credit points:

- Graduates from the 5-year Bachelor of Education Programmes of the EdUHK may apply for credit transfer if they have studied MTeach specialisation courses as electives in their senior years of study.
- Participants have attended courses for the Certificate of Professional Development Programmes or other Master's degree programmes of which the standards and contents match those of the MTeach Programme's courses, may apply for credit transfer.

General Admission Requirements

Applicants should hold a recognized Bachelor's degree and a recognized teacher's qualification, or equivalent.

Applicants may be required to attend an interview/test.

Applicants whose entrance qualification is obtained from an institution in a non-English speaking system should have attained one of the following English proficiency requirements, which may be subject to adjustment.

- IELTS 6.0; or
- Grade C or above in GCSE/GCE OL English; or
- A TOEFL score of 80 (internet-based test); or
- Band 6 in the Chinese Mainland's College English Test (CET) (a total score of 430 or above and the test result should be valid within two years); or
- Other equivalent qualifications.

The results of IELTS/TOEFL provided **should be within two years** (i.e., for the 2024/25 intake, the IELTS/TOEFL test must be obtained on or after 1 Jan 2022); and

The results of IELTS/TOEFL **should be "taken in test centres"** (i.e., tests taken online such as IELTS indicator/IELTS Online and TOEFL Home Editions are NOT accepted).

Medium of Instruction

Two streams of studies (English as the medium of instruction [EMI] and Chinese (Putonghua/Cantonese) as the medium of instruction [PMI/CMI]) are offered from 2023/24 and onwards. For details of the Mol, please refer to the programme website.

Study Time and Venue

Classes are held primarily at the Tai Po Campus and occasionally at the Tseung Kwan O Study Centre, Kowloon Tong Satellite Study Centre, and/or North Point Study Centre. Full-time students will normally attend classes on weekdays daytime, evenings, and/or Saturdays, while part-time students will normally attend classes on weekdays evenings, and/or Saturdays.

Tuition Fee

Tuition Fee: HK\$145,400

The tuition fee is provisional and subject to adjustment. Tuition fees paid are normally not refundable or transferable. Extension fees will be charged to students who have to extend their studies beyond the normal duration (i.e. 1 year for full-time and 2 years for part-time)

Postgraduate Diploma in Education (Early Childhood Education)

PGDE(ECE) | A1P018 (One-year Full-time)/
C2P040 (Two-year Part-time)

Programme Leader: Dr WU Shu-chen/
Dr KONG Siu Hang Eric

Enquiry Hotline: (852) 2948 8112/(852) 2948 7487

✉ lyho@eduhk.hk



👉 www.eduhk.hk/fehhd

(Please refer to the website for the most up-to-date programme information)

Special Features

- Integration of theory and practice
- Eligibility to apply for registration as Qualified Kindergarten Teachers recognised by the Education Bureau, Child Care Workers and Child Care Supervisors recognised by the Social Welfare Department

Applicants

Untrained early childhood teachers or degree holders who wish to embark on career development in early childhood education. Part-time applicants must be serving teachers in early childhood education settings in Hong Kong.

Programme Structure

Students of full-time programme are normally required to attend four to five study days* per week in semester I, and at least three days per week in semester II. Students of part-time programme are normally required to attend two 3-hour classes per week in each semester.

For full-time programme, classes are normally held in daytime/evening on weekdays and/or Saturdays at Tai Po Campus and/or Tseung Kwan O Study Centre/North Point Study Centre/Kowloon Tong Satellite Study Centre as decided by the University.

For part-time programme, classes are normally held in evening on weekdays and/or daytime on Saturdays at Tai Po Campus/Tseung Kwan O Study Centre/North Point Study Centre/Kowloon Tong Satellite Study Centre as decided by the University.

This programme comprises a programme orientation and the following components#:

	Credit Points
General Methods	9
Education Studies	12
Electives	3
Field Experience	6
Total	30

* Subject to change due to the timetabling arrangement of the University

Subject to change due to the programme development

Medium of Instruction

Full-time Programme

The medium of instruction is Chinese and/or English for the full-time programme. Applicant's adequate proficiency in both Chinese and English is required, if appropriate. English is adopted as the language of instruction for relevant courses. Combined classes with students of the part-time programme would be arranged where necessary.

The full-time programme offers a stream of Chinese and English (CEMI) and an English stream (EMI). Applicants have to choose which medium of instruction they prefer upon application.

Part-time Programme

The part-time programme offers a Chinese stream (CMI) and an English stream (EMI). Applicants have to choose which medium of instruction they prefer upon application.

- **Chinese as the medium of instruction (CMI)**

The medium of instruction is mainly Chinese. English may be adopted as the language of instruction for relevant courses, as appropriate.

- **English as the medium of instruction (EMI)**

The medium of instruction is mainly English.

Information Technology Competency In Education (ITCE)

Before graduation, students who are enrolled in education programmes (leading to Qualified Teacher Status (QTS)/ Qualified Kindergarten Teacher (QKT)) are required to complete two parts:

Part One: Complete and pass the IT e-Portfolio Checking (ITC3003)

- Complete the IT e-Portfolio, or
- Complete the Student Teacher Education Program (STEP); or
- Complete the Artificial Intelligence Literacy (AIL) program

Part Two: Complete and pass all the required courses in the programme to demonstrate the attainment of ITCE (ITC3001)

For the details of ITCE and IT e-Portfolio Checking, please visit https://www.eduhk.hk/mit/students_itce/. For the details of Student Teacher Education Program (STEP) and Artificial Intelligence Literacy (AIL), please visit <https://www.lttc.eduhk.hk/>.

Entrance Requirements

Applicants should:

One-year Full-time Programme

- Hold a recognised Bachelor’s degree, or equivalent.

Two-year Part-time Programme

- Hold a recognised Bachelor’s degree, or equivalent; and
- Be serving teachers* in early childhood education settings registered with the Education Bureau in Hong Kong.

* Applicants are required to teach a regular class of at least 10 children aged 3-6 years old with minimum of 3 hours per day during the teaching practice period. Please submit the completed recommendation form with your application.

Shortlisted applicants may be required to attend an interview.

Language Requirements for PGDE Full-time Applicants

English Language Requirements

Applicants should:

- Hold a recognised Bachelor’s/higher degree conferred by a local university/institution or an institution in English speaking system; or
- Fulfill one of the following minimum English proficiency requirements:
 - Overall score of IELTS 6.0 (Academic version) (the test should be taken in test centres and the result should be valid within two years);
 - A TOEFL score of 80 (internet-based test) (the test should be taken in test centres and the result should be valid within two years);
 - GCSE / GCE OL English Grade C or above;
 - GCE AS Level or AL Level English Grade E or above;
 - Band 6 in the Chinese Mainland’s College English Test (CET) (a total score of 430 or above and the test result should be valid within two years); or
 - Other equivalent qualifications.

For example, if you are applying for 2024/25 academic year, your IELTS / TOEFL / CET6 test must be obtained on or after 1 January 2022.

Note: Students who are solely holding result of CET6 in order to meet the English language admission requirement should provide verification certificate (成績證明) issued by the National Education Examinations Authority (中國教育考試網) (bjczm.neea.edu.cn/) before programme registration. Please refer to individual offer letter for details.

Chinese Language Requirements (except those choosing EMI class)

Applicants should:

- Hold a recognised Bachelor’s/higher degree conferred by a local university/institution or an institution in Chinese speaking system; or
- Obtain Level 2/Grade E or above in the HKCEE Chinese Language (applicable to holders of a local recognised Associate Degree/Higher Diploma); or
- Obtain Grade E or above in ASL Chinese Language & Culture in the HKALE; or
- Obtain Level 3 or above in Chinese Language in the HKDSE.

Tuition Fee

The tuition fee listed below are provisional and subject to adjustment. Extension fees will be charged to students who have to extend their studies beyond the normal duration (i.e. one year for full-time and two years for part-time).

Full-time PGDE Programmes	Part-time PGDE Programmes
Local students: HK\$42,100 per annum	Local students: HK\$21,050 per annum
Non-local students [^] : HK\$145,000 per annum	Non-local students [^] : HK\$72,500 per annum

[^] Starting from the 2019/20 intake cohort, a new definition of Non-local Students (NLS) is adopted in accordance with the HKSAR Government policy. For details, please visit our website: www.eduhk.hk/acadprog/nonlocal/



Postgraduate Diploma in Education (Professional and Vocational Education)

PGDE(PVE) | C2P041 (2-year Part-time)
Programme Leader: Dr YUN Pui Ho Patrick
Enquiry Hotline: (852) 2948 8677
✉ pgdepve@eduhk.hk

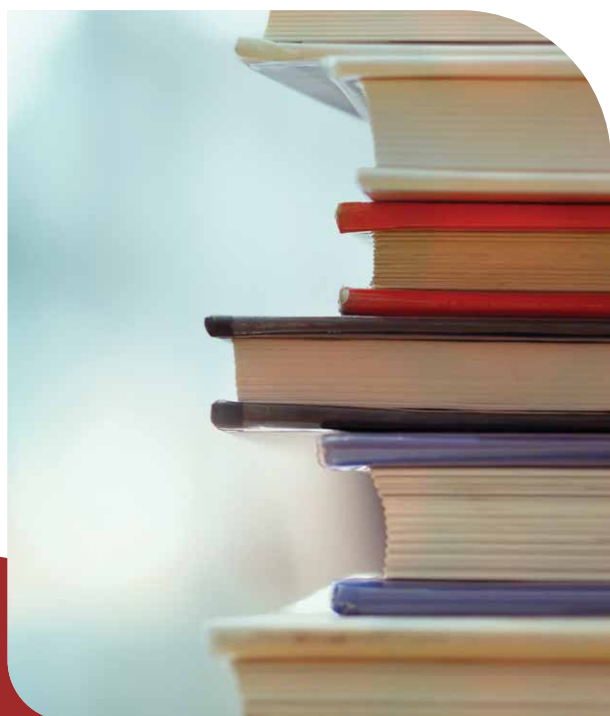


👉 www.eduhk.hk/fehhd
(Please refer to the website for the most up-to-date programme information)

Special Features

Graduates of the programme are expected to:

- Apply and adapt key concepts and theories of education and learning within the contexts of PVE;
- Work effectively within their own contexts by understanding, evaluating and interpreting the contexts of PVE from multiple perspectives;
- Design and implement learning environments that are learner-centred and adopt a learning-by-doing strategy oriented to lifelong learning;
- Develop and implement online teaching strategies to support student learning;
- Develop and apply a range of formative and summative assessment and feedback strategies to engage and evaluate students learning; and
- Continue to learn within rapidly changing educational environments through the skills of enquiry, application and reflection.



Programme Structure

This is a two-year part-time programme comprising 30 credit points (cps). It is delivered through face-to-face teaching, non-face-to-face (online and/or supervised) study and independent learning. The ratio of face-to-face teaching to non-face-to-face study is normally 6:4. Each 3-cp course includes 21-24 hours of face-to-face teaching, 15-18 hours of non-face-to-face study, and 78 additional hours of other independent learning, making 117 hours of total student effort. Classes are normally held in weekday evenings and/or on Saturdays in Tseung Kwan O Study Centre/ Kowloon Tong Satellite Study Centre/ Tai Po Campus/ North Point Study Centre, while other arrangements will be made when necessary as decided by the University. The programme consists of a programme orientation and the following components:

Components	Credit Points
General Methods	6
Education Studies	12
Electives	6
Field Experience	6
Total	30

Remark: The curriculum of this programme is currently under review and is subject to revision.

Medium of Instruction

The medium of instruction is mainly Chinese. English and/ or Putonghua is adopted as the language of instruction for relevant courses, as appropriate.

Information Technology Competency In Education (ITCE)

Students who are enrolled in education programmes [leading to Qualified Teacher Status (QTS)] are required to complete the IT e-Portfolio Checking/Student Teacher Education Program (STEP)/Artificial Intelligence Literacy (AIL) programme and pass all the required courses in the programme to demonstrate the attainment of Information Technology Competency in Education (ITCE) before graduation.



For detailed information, please refer to www.lttc.eduhk.hk/for-students/information-technology-competency-in-education-itce

Entrance Requirements

Applicants should normally:

- Hold a recognised Bachelor's degree, or equivalent; and
- Hold a teaching post in a PVE context.
- Priority will be given to applicants already teaching Applied Learning subjects.

Shortlisted applicants may be required to attend an interview.

Tuition Fee

HK\$21,050 per annum for local students; HK\$72,500 per annum for non-local students.



“The EdUHK’s PGDE (PVE) programme is thoroughly designed, well-structured, and professionally managed. To me, pursuing the programme resembles a box of chocolates.

Firstly, I have learnt principles and practices of curriculum, pedagogy and assessment within the contexts of PVE, and also had opportunities to apply what I have learnt through Field Experience (FE) teaching visits which benefited my students’ learning. Moreover, my lecturers have been caring cultivators, inspirational co-constructors of knowledge, and committed role models of professional teachers.

My FE supervisor was so professional and gave me a lot of advice during the FE visits. I also found SPFEO online workshops beneficial for improving my FE e-Portfolios and professional development. ”

Dr Bonnie MAK

School Teacher
Alumna of PGDE(PVE)

中文研究文學碩士（語文教育）課程

Master of Arts in Chinese Studies (Language Education)

MACSLE | A1M052 (一年全日制)

課程主任：商海鋒博士

課程副主任：周潑鷺博士 / 張曉恩博士

課程查詢：(852) 2948 8481/(852) 2948 8647

✉ macsle@eduhk.hk



✦ www.eduhk.hk/macsle

(Please refer to the website for the most up-to-date programme information)



本課程已納入香港語常會「語文教師專業發展獎勵津貼計劃認可課程」及「認可主修語文科目的學位課程」，合資格學員可獲學費津貼。請參考語常會網頁：

✦ <https://scholarhk.edb.hkedcity.net/>

課程目標

中文研究文學碩士（語文教育）課程專為中文教育工作者、編輯、媒體、行政及公務員等專業人士的學員而設。課程旨在提升學員的中文素養及語文學科知識，藉此拓寬學員研習中國語文、文學的視野，以應付中文專業範疇的工作需要。課程提供多類型選修科目，切合學員不同的學術興趣。

學員修畢本課程後，應能：

- 增進文學、語言及文化方面的知識；
- 嫻熟運用中國語文，增強分析、鑑賞和評價能力；及
- 把知識應用在語文教育專業上。



課程特色

- 為立志從事中文相關工作的學生提供相關行業的增值機會，如媒體。
- 為立志繼續深造的學生提供研究型的學術訓練。
- 為立志做語文教師的同學：
 - 提供香港中小學中文科老師必備的專科資格；及
 - 提供入讀學位教師教育文憑課程 (PGDE) 的橋樑。
- 在中文領域劃分文學、語言、文化三大研習範疇，以專題方式引導學員開展深入而多元化的知識研習。
- 配合當前語文課程發展，除了重視經典的學習，還設有「文學與電影」、「文學創作專題研究」、「兒童文學專題研究」、「語文傳意專題研究」等新向度的範疇及科目，深度與廣度兼備，開拓學員研習中文的視野。
- 採用多元的評估方式，包括論文、影評、小組研習、戲劇表演、口頭報告、海報設計、電子歷程檔案等，為學員提供獨特的學習經驗。
- 作為全港具規模的中文相關文學碩士課程之一，為同學提供豐富多彩的課外活動，包括就業和升學指導、電影討論、校友聯誼、節日聚會、文化探訪之旅等，讓學員獲得不同的增值機會，積累人脈與社會資本，增強對課程的歸屬感。

課程結構

本課程共合二十四個學分，學員一般於一年內修畢課程，主要於日間上課，部份科目可能會於晚間或週六上課。課程內容分為以下兩個範疇：

核心範疇	12 學分
選修範疇	12 學分
總計	24 學分

核心範疇 (科目名稱)	學分
經典作品與文化專題研究	3
文獻學與中文研究	3
戲劇與語言藝術	3
文學與電影	3

選修範疇	學分	
文學	兒童文學專題研究	3
	現當代文學專題研究	3
	文學創作專題研究	3
	古典文學專題研究	3
語言	語篇分析	3
	漢語言文化專題	3
	方言與普通話專題研究	3
	語文傳意專題研究	3
	古代漢語專題研究	3
	現代漢語專題 (供學士學位非以中文為主修者優先選修)	3
文化	網路文學與流行文化	3
	文化專題研究	3
	中文教學與情意關懷	3
專題研習	專題研習 [#]	6

[#] 專題研習以兩門科目(6個學分)計算，名額有限，學員須先於第一學期的學業成績達到指定水平，並提交計畫書供課程委員會評審，通過評核才可修讀此科。

註：上列各科目及內容僅供參考，必修科每年開設，而選修科的具體開設情況視乎每年的師資、收生情況，必要時會有所調整。

教學語言

本課程主要以普通話授課。在適當的情況下，部分環節將以粵語或英語授課。

學費

本課程為自資課程，全期學費為港幣十三萬六千元，按科目收費，即三個學分的科目每科港幣一萬七千元，六個學分的科目每科港幣三萬四千元。上述學費可能於日後有所調整，已繳學費一般不獲退還或轉讓。超逾常規修讀期限之學員，需繳交延期修讀費用。

入學條件

申請人一般須持有認可大學頒授的：

- 教育學士學位；或
- 中文本科或人文學科學士學位；或
- 學位教師中文科知識深造文憑或同等學歷。

申請人可能需要參加面試，中文或相關本科成績優異的申請人或豁免面試。

獎學金

本課程設有獎學金[^]，以表揚在本課程學業成績優異的學員。

[^] 學院保留會否頒發獎學金的權利。

學分豁免

如學員曾於認可大學學士後課程修讀相關科目，可申請學分豁免，最多可獲豁免三個學分。



申請人可於網上遞交申請：
www.eduhk.hk/acadprog/online



Master of Arts in Digital Humanities for Cultural Professionals

MADHCP | A1M109 (1-year Full-time)
Programme Leader: Dr BANERJEE Bidisha
Enquiry Hotline: (852) 2948 8329/(852) 2948 8647
✉ madhcp@eduhk.hk



➤ www.eduhk.hk/madhcp
(Please refer to the website for the most up-to-date programme information)

Introduction

The Master of Arts in Digital Humanities for Cultural Professionals, the only programme of its kind in Hong Kong, provides quality education to individuals who want to equip themselves with digital skills to work in the creative and cultural sectors in Hong Kong, and the Greater Bay Area. Building on the synergy between Cultural Studies and Information Technology, it allows students and professionals to develop skills in cultural management, digital technologies and (big) data analysis and to provide cutting-edge innovation in the cultural and creative industries.

Programme Features

The MADHCP programme provides a wide range of courses with a focus on the following areas: cultural management, cultural preservation, data analytics, digital learning, digital media, and creative arts.

In short, the MADHCP programme enables students to:

- evaluate and develop digital humanities research methods, principles, and concepts;
- conceptualise and implement the digital practices essential in the cultural and arts domains;
- critically evaluate digital works (texts, visuality, virtual practices, etc.) as cultural artefacts and discourses; and
- assess and formulate the ethical considerations necessary for professionals working in digital humanities, creative arts and cultural industries.





Programme Structure

The MADHCP programme consists of 24 credit points (cps) and will be offered in a one-year full-time mode. Students are required to take two core courses and six elective courses to complete the programme. Alternatively, one elective can be replaced by a Digital Humanities Project.

The following table provides an overview of the programme structure:

Domain/Component	cps
Two core courses (3 cps each)	6
Six elective courses (3 cps each)	18
or	or
Five elective courses (3 cps each), plus	15
Digital Humanities Project (3 cps)	3
Total	24

* Not all MADHCP courses will be offered every year.

Medium of Instruction

The programme is conducted in English.

Tuition Fee

The tuition fee for the whole programme is HK\$136,000, i.e. HK\$17,000 per course, which is provisional and subject to adjustment. Tuition fees paid are normally not refundable or transferable. Extension fees will be charged to students who have to extend their studies beyond the normal duration.

Entrance Requirements

Applicants should hold a recognised Bachelor's degree in Arts, Humanities, Social Sciences, Journalism and Communication, Cultural Studies, Education, or related disciplines.

Applicants whose entrance qualification is obtained from an institution in a non-English speaking system should normally fulfil one of the following minimum English proficiency requirements:

- Overall score of IELTS 6.0 with no subtest lower than 5.5 (academic version) (the test should be taken in test centres and the result should be valid within two years); or
- TOEFL score of 80 (internet-based test) (the test should be taken in test centres and the result should be valid within two years); or
- other equivalent qualifications.

Shortlisted applicants may be required to attend an interview.

Notes to Non-Local Applicants

- Applicants whose entrance qualification is obtained from an institution in a non-English speaking system should include their IELTS/TOEFL test result (taken in test centres within 2 years) in the application documents. Otherwise, the application may be delayed.
- It normally takes 6-8 weeks for the Hong Kong Immigration Department to process visa applications. You are therefore strongly advised to submit your application as early as possible.
- Your application can be completed online without going through any education agencies.



Please submit your application online at www.eduhk.hk/acadprog/online/

Master of Arts in Global Histories of Education

MAGHE | A1M106 (1-year Full-time)
Programme Leader: Dr Klaus DITTRICH
Enquiry Hotline: (852) 2948 7735/(852) 2948 8647
✉ maghe@eduhk.hk



➤ www.eduhk.hk/maghe
(Please refer to the website for the most up-to-date programme information)

Introduction

The Master of Arts in Global Histories of Education is an interdisciplinary programme and brings together courses in global history, the history of education and comparative education. It is geared towards a deeper understanding of the present state of education and will provide students with a grounded perspective on the future. The programme aims at cultivating graduates with an awareness of the historical processes that forged and continue to shape modern education systems in East Asia and worldwide, and thereby equips students with professionally relevant academic knowledge. It can also serve as a stepping stone for doctoral studies.

Programme Features

The MAGHE programme familiarises students with historical developments in education during the last two centuries in East Asia and beyond. It thereby provides a global perspective on key issues in the history of education. These include the implementation of national school systems, the growth of university education, the increasing role of international organisations (such as UNESCO and OECD), and the more recent rise of standardised testing and international rankings.

In short, the MAGHE programme enables students to:

- understand globalisation through the history of education;
- analyse historical developments in education worldwide;
- critically assess current education systems and imagine the future of education; and
- develop the ability to assist in educational reform and understand leadership roles in educational contexts.



Programme Structure

The MAGHE programme consists of 24 credit points (cps) and will be offered in a one-year full-time mode. Students are required to take three core courses and five elective courses to complete the programme. Alternatively, two electives can be replaced by a research project.

The following table provides an overview of the programme structure:

Domain/Component	cps
Three core courses (3 cps each)	9
Five elective courses* (3 cps each)	15
or	or
Three elective courses* (3 cps each), plus	9
Research Project (6 cps)#	6
Total	24

* Not all elective courses will be offered every year.

The Research Project is capped at twelve students per cohort and implies the approval of a research proposal.

Medium of Instruction

The programme is conducted in English.

Tuition Fee

The tuition fee for the whole programme is HK\$128,000, i.e. HK\$16,000 per course (Research Project is counted as 2 courses), which is provisional and subject to adjustment. Tuition fees paid are normally not refundable or transferable. Extension fees will be charged to students who have to extend their studies beyond the normal duration.

Entrance Requirements

Applications should hold a recognised Bachelor's degree in History, Education or any other relevant disciplines.

Applicants whose entrance qualification is obtained from an institution in a non-English speaking system should normally fulfil one of the following minimum English proficiency requirements:

- Overall score of IELTS 6.0 (the test should be taken in test centres and the result should be valid within two years); or
- TOEFL score of 80 (internet-based test) (the test should be taken in test centres and the result should be valid within two years); or
- Band 6 in the Chinese Mainland's College English Test (CET) (a total score of 430 or above and the test result should be valid within two years); or
- Grade C or above in GCSE / GCE OL English; or
- Other equivalent qualifications.

Shortlisted applicants may be required to attend an interview.



Notes to Non-Local Applicants

- Applicants whose entrance qualification is obtained from an institution in a non-English speaking system should include their IELTS/TOEFL test result taken in test centres within 2 years in the application documents. Otherwise, the application may be delayed.
- It normally takes 6-8 weeks for the Hong Kong Immigration Department to process visa applications. You are therefore strongly advised to submit your application as early as possible.
- Your application can be completed online without going through any education agencies.



Please submit your application online at www.eduhk.hk/acadprog/online

國際漢語教學文學碩士

Master of Arts in Teaching Chinese as an International Language

MATCIL | A1M046 (一年全日制)

課程主任：梁源博士

課程查詢：(852) 2948 7735/(852) 2948 8647

✉ matcil@eduhk.hk



✉ www.eduhk.hk/matcil

(Please refer to the website for the most up-to-date programme information)

本課程獲列入教資會2024/25年「指定研究院修課課程獎學金計劃」。獲本課程取錄的本地學生有機會以最低學費HK\$42,100完成整個課程。有關「指定研究院修課課程獎學金計劃」，請瀏覽教資會網頁 (www.ugc.edu.hk/big5/ugc/activity/targeted_postgraduate_scheme.html) 了解有關計劃詳情及最新資訊。



本課程已獲國際文憑組織 (IBO) 認可，成為IB教學證書認可課程。成功修畢本課程而符合條件者，經申請可獲頒IB教學資格證書 (文憑課程)，請瀏覽國際文憑組織 (IBO) 網頁 (www.ibo.org/professional-development/professional-certificates) 了解詳情。



課程目標

國際漢語教學文學碩士課程供有志從事國際漢語教學和研究的人士報讀。課程提供漢語本科知識的研習與國際漢語教學專業的培訓，目的在於拓展和深化學員對漢語的認識以及對國際漢語教學的理論與實踐的探討。通過學術講座和學校探訪等具體的各類學術體驗活動，探討漢語作為非母語學習的學科建構及有效的課堂教學策略，以深化對理論的認識，並把理論付諸實踐。

課程特色

- 理論探究與教學實踐並重，培養學員自主學習和持續探究的專業素養；
- 兼顧世界各地國際漢語教育的研習，例如國際文憑 (IB) 課程；
- 提供多個選修科目、學校體驗及專題研習供學員選擇。學校體驗提供機會讓學員在香港本地、中國內地或海外的學校進行實體教學，全面了解國際漢語教育的實際情形。專題研習則旨在透過撰寫學術論文，為學員打好研究基礎，有助學員將來投入學術研究的領域；
- 提供豐富多元的課外活動，包括就業和升學指導、學術講座、義工等，並與世界各地高等院校及國際學校有良好合作關係，讓學員獲得不同增值機會，提升個人素養、拓展人脈資本。



課程結構

本課程共合三十個學分，學員一般於一年內修畢課程，主要於日間上課，部分科目於晚間或週六上課。課程內容分以下兩個範疇：

核心範疇	15 學分
選修範疇	15 學分
總計	30 學分

核心範疇 (科目名稱)	學分
漢語課程、教材和教學設計	3
國際漢語教學法：語音教學、聽說教學	3
國際漢語教學法：識字教學、讀寫教學	3
第二語言習得與漢語學習	3
現代漢語專題 [#]	3

選修範疇 ^v	學分
學校體驗 [^]	6
IB教學專業 ⁺	3
2門選修科 (每科3學分)	6
5門選修科 (每科3學分) 或 3門選修科及學校體驗 [^] / 專題研習 [*]	15

[#] 大學本科主修中國語文/中國文學/國際漢語的學員可申請豁免修讀此科，另選一門選修科代替，惟學員仍可以此科為選修科。

^v 選修科的具體開設情況視乎每年的師資、收生情況，必要時會有所調整。

⁺ 學員將可在第一學期申請修讀IB教學專業。課程委員會將會按相關條件挑選合資格學員，有關申請要求及名額請參考本課程網頁。

[^] 學校體驗以兩門科目(6個學分)計算，名額會視乎該學年的情況而定。學員必須持有有效旅行證件方可申請前往海外駐校體驗。不同國家、地區的學員或需通過本校或有關實習學校安排的面試方可選修此科。

^{*} 專題研習以兩門科目(6個學分)計算，而且名額有限，學員須提交計劃書供課程委員會評審，通過評核才可修讀此科。

教學語言

本課程主要以普通話授課。部分核心及選修科目以英語或粵語教授。

學費

本課程為自資課程，全期學費為港幣十五萬二千五百元，按科目收費，即三個學分的科目每科港幣一萬五千二百五十元，六個學分的科目每科港幣三萬零五百元。選擇到海外作駐校體驗的學員，須繳付相應的額外費用，如住宿費、生活費、交通費及簽證費等。上述學費可能於日後有所調整，已繳學費一般不獲退還或轉讓。超逾常規修讀期限之學員，需繳交延期修讀費用。

入學條件

申請人一般須持有認可大學頒授的：

- 學士學位；及
- 具特定程度的漢語能力，例如：
 - 香港考試及評核局普通話高級水平測試(合格)；或
 - 國家語言文字工作委員會普通話水平測試(二級乙等或以上)；或
 - 香港教育局及考評局教師語文能力評核(普通話)(口語卷，三等或以上)；或
 - 國家漢語水平考試委員會新漢語水平考試HSK(第五級聽力、閱讀、寫作均考獲70分或以上)，及漢語水平口語考試HSKK(高級考獲70分或以上)；或
 - 國立台灣師範大學華語文能力測驗(TOP)(中等三級或以上)；及
- 具特定程度的英語或其他外語能力。

申請人持有的大學學位如由非英語授課的院校頒發，一般須符合以下任何一項英語水平的最低要求：

- 近兩年內於考試中心應考之雅思國際英語語言測試(IELTS)總分6.0或以上；或
- 近兩年內於考試中心應考之托福(TOEFL)網考總成績80分或以上；或
- 近兩年內有效之國家大學英語六級考試(CET-6)總分430或以上；或
- 其他同等資格。

如有需要，申請人會被要求參加特定的英語或普通話水平測試。

學分豁免

如學員曾於認可大學修讀過相關的碩士課程科目，可申請學分豁免，最多可獲豁免六個學分。



申請人可於網上遞交申請：
www.eduhk.hk/acadprog/online

Master of Arts in Teaching English to Speakers of Other Languages

MATESOL | A1M057 (1-year Full-time)
 Programme Leader: Dr MA Qing Angel
 Enquiry Hotline: (852) 2948 8329/(852) 2948 8647
 ✉ matesol@eduhk.hk



➤ www.eduhk.hk/matesol
 (Please refer to the website for the most up-to-date programme information)

Introduction

The Master of Arts in Teaching English to Speakers of Other Languages programme provides practical, professionally-focused training for graduates who are in need of consolidating subject knowledge related to English language teaching. It is designed for English language teachers, teacher educators and language professionals working in areas of language teaching, language-in-education policy, curriculum design and planning, materials development and assessment in Hong Kong, the Mainland or overseas.

Programme Features

- The General Strand provides a broad-based introduction to TESOL research and practice through core courses and free choice of a wide range of electives.
- The English Studies Strand provides a broad-based introduction to TESOL research and practice. It is especially suited to local and overseas English language teachers who need to upgrade their subject knowledge base and professional qualifications.
- The Digital Technology for English Learning and Teaching Strand focuses on the integration of the use of digital tools and data techniques for linguistics and language research. It helps students implement a digital solution for a theoretical/applied linguistic inquiry of the English language. It is especially suited for students intending to conduct research on digital humanities.
- The Applied Linguistics Strand provides a broad-based introduction to TESOL research and a firm grounding in research methodology. It is designed for students with a particular interest in TESOL research as a gateway to EdD or PhD study.

Programme Recognitions

The MATESOL programme is recognised by The Standing Committee on Language Education and Research (SCOLAR) as an English language major degree programme; it is also included in the list of “Programmes Accepted for Grants under the Professional Development Incentive Grant Scheme for Language Teachers”.

MATESOL graduates will be eligible to apply for full exemption from the Language Proficiency Assessment (English Language) (LPAE), if they have already obtained “relevant teacher training”. For details about the recognition and LPAE, please visit the websites of Education Bureau & SCOLAR.

Programme Structure

The MATESOL programme is offered in a one-year full-time mode. MATESOL has four-degree strands* and each strand has its focus and specialty. All degree strands carry 24 credit points (cps), which is equivalent to 8 courses.

Domain/Component	cps	
Core courses	ELT Methodology: Innovation and Change	3
	Second Language Research Methods	3
Degree strands (choose any one strand)	English Studies	18
	General	18
	Digital Technology for English Learning and Teaching	18
	Applied Linguistics	18
Total	24	

* Not all MATESOL degree strands/courses will be offered every year.



Medium of Instruction

The programme is conducted in English.

Tuition Fee

The tuition fee for the whole programme is HK\$136,000, i.e. HK\$17,000 per course (Dissertation is counted as 2 courses), which is provisional and subject to adjustment. Tuition fees paid are normally not refundable or transferable. Extension fees will be charged to students who have to extend their studies beyond the normal duration.

Entrance Requirements

Applicants should hold a recognised Bachelor's degree and preferably meet at least one of the following requirements:

- A recognised language teaching qualification; or
- Working experience in English language teaching.

Holders of a Bachelor's degree in disciplines other than English may also be considered.

Candidates without a teaching qualification should be aware that MATESOL is an advanced academic qualification that is most valuable in conjunction with a Postgraduate Diploma in Education (English) (PGDE or equivalent) qualification.

Applicants whose entrance qualification is obtained from an institution in a non-English speaking system should normally fulfil one of the following minimum English proficiency requirements:

- Overall score of IELTS 7.0 with no subtest lower than 6.5 (academic version) (the test should be taken in test centres and the result should be valid within two years); or
- TOEFL score of 100 (internet-based test) (the test should be taken in test centres and the result should be valid within two years); or
- other equivalent qualifications.

Shortlisted applicants may be required to attend an interview.

Credit Transfer

Students with relevant postgraduate qualifications may apply for credit transfer up to 25% of the required number of credits for the MATESOL award.

Notes to Non-Local Applicants

- Applicants whose entrance qualification is obtained from an institution in a non-English speaking system should include their IELTS/TOEFL test result (taken in test centres within 2 years) in the application documents. Otherwise, the application may be delayed.
- It normally takes 6-8 weeks for the Hong Kong Immigration Department to process visa applications. You are therefore strongly advised to submit your application as early as possible.
- Your application can be completed online without going through any education agencies.



Please submit your application online at www.eduhk.hk/acadprog/online

Master of Arts in Education for Sustainability

MA(EfS) | A1M061 (1-year Full-time)

Programme Leader: Dr DENG Wenjing

Enquiry Hotline: (852) 2948 8972

✉ maefs@eduhk.hk

📍 Department of Science and Environmental Studies, Room D3-1/F-37, The Education University of Hong Kong, 10 Lo Ping Road, Tai Po, New Territories, Hong Kong



👉 <https://maefs.eduhk.hk>

(Please refer to the website for the most up-to-date programme information)

Introduction

This Master of Arts (MA) programme focuses on the principles and pedagogy of education for sustainability (EfS). It emphasises subject knowledge, innovative pedagogical practices, flexible teaching environments and a critical approach to thinking about educational and sustainability issues. Overseas scholars may be invited as the guest lecturers of some courses, if applicable. Students from different academic backgrounds are welcome to apply for our programme.

Programme Aims

This programme aims to cater for professionals who are looking for an opportunity to improve their environmental and sustainability knowledge, to have this recognised through the award of a Master's degree, and to apply such knowledge to the teaching and learning of sustainability issues in the school setting or other learning environments.

Programme Structure

The programme comprises 24 credit points. Students normally take one year to complete the programme. They need to attend classes which may be held in the evening/daytime on weekdays, Saturdays, Sundays, and/or during long holidays at the Tai Po Campus, Tseung Kwan O Study Centre, Kowloon Tong Satellite Study Centre and/or North Point Study Centre as decided by the University.





Programme Curriculum

Students are required to complete 7 core courses with 24 credit points for graduation.

Course Code	Course Title	Credit Points	One-year Full-time
SES6020	Sustainability Studies: An Overview	3	Yr 1; Sem 1
SES6021	Global and Local Issues in Education for Sustainability	3	Yr 1; Sem 1
SES6022	Learning and Teaching in EfS	3	Yr 1; Sem 1
SES6024	Research in Education for Sustainability	3	Yr 1; Sem 1
SES6023	Assessment and Evaluation in EfS, Theory and Practice	3	Yr 1; Sem 2
SES6025	Sustainable Campus Development	3	Yr 1; Sem 2
SES6026	Thesis Writing Course and Research Thesis Project on EfS	6	Yr 1; Sem 2

* Programme curriculum and course offering may be subject to change.

Medium of Instruction

The medium of instruction is English.

Tuition Fee

This programme is offered on a self-funded basis. The tuition fee for the whole programme is HK\$138,600, which is provisional and subject to adjustment. Tuition fees paid are normally not refundable or transferrable. Extension fees will be charged to students who have to extend their studies beyond the normal duration (i.e. 1 year for full-time).

Entrance Requirements

Applicants should normally hold a recognised Bachelor's degree in any inter-disciplinary or other equivalent qualifications. Shortlisted applicants may be required to attend an interview.

Applicants whose entrance qualification is obtained from an institution in a non-English speaking system should normally fulfil one of the following minimum English proficiency requirements:

- Overall score of IELTS 6.0 (academic version) (the test should be taken in test centres and the result should be valid within two years); or
- TOEFL score of 80 (internet-based test) (the test should be taken in test centres and the result should be valid within two years); or
- Band 6 in the Chinese Mainland's College English Test (CET) (a total score of 430 or above and the test result should be valid within two years); or
- Grade C or above in GCSE / GCE OL English; or
- Other equivalent qualifications.

The results of IELTS/TOEFL should be **"taken in test centres"** (i.e., tests taken online such as IELTS indicator/ IELTS Online and TOEFL Home Editions are NOT accepted).

Master of Arts in Mathematics and Pedagogy

MA(MP) | A1M085 (1-year Full-time)

Programme Leader: Dr ZHANG Qiaoping

Enquiry Hotline: (852) 2948 8542

✉ mamp@eduhk.hk (General Enquiry); or
zqiaoping@eduhk.hk (Academic Enquiry)

📍 Department of Mathematics and Information Technology, Room D4-1/F-19A, The Education University of Hong Kong, 10 Lo Ping Road, Tai Po, New Territories, Hong Kong



👉 www.eduhk.hk/mamp

(Please refer to the website for the most up-to-date programme information)

Introduction

The programme emphasises Mathematics subject knowledge, innovative pedagogical practices and flexible teaching environments. It is designed for Mathematics teachers who are looking for an opportunity to further their mathematical knowledge and to apply such knowledge to the learning and teaching of Mathematics in the school settings. It aims to enable the participants to become competent Mathematics teachers and enhance their upward mobility in the teaching career.

Programme Aims

This programme aims to:

- 1) broaden students' knowledge in Mathematics;
- 2) help students realise how to teach Mathematics in schools from an advanced mathematical standpoint;
- 3) expose students to different classroom environments and innovative pedagogical practices in Mathematics;
- 4) cultivate synergy between subject knowledge and pedagogy in Mathematics; and
- 5) foster students' critical thinking to enable them to become reflective practitioners.



Programme Structure

The programme comprises 24 credit points (cps). Students normally take one year (Full-time) to complete the programme. They need to attend an average of four classes per week which may be held in the daytime/evening on weekdays and/or Saturdays at the Tai Po Campus, Tseung Kwan O Study Centre, Kowloon Tong Satellite Study Centre and/or North Point Study Centre as decided by the University.

Programme Curriculum

The programme comprises 24 credit points (cps). Each course is worth 3 cps.

Component	Credit Points (CPs)
3 core courses + 1 elective course (Mathematical Studies)	12
3 core courses + 1 elective course (Pedagogy in Mathematics)	12
Total	24

Medium of Instruction

The medium of instruction is mainly in English (supplemented with Chinese when appropriate).

Tuition Fee

This programme is offered on a self-financed basis. The tuition fee for the whole programme is HK\$132,300, which is provisional and subject to adjustment. Tuition fees paid are normally not refundable or transferrable. Extension fees will be charged to students who have to extend their studies beyond the normal duration.



Entrance Requirements

The minimum entrance requirements for this programme:

- A recognised Bachelor's degree, preferably in subject areas other than Mathematics*
- Obtained in the HKALE Grade E or above in Mathematics or in HKDSE Level 4 or above in Mathematics (Compulsory Part), or an equivalent qualification in Mathematics*
- Applicant whose Bachelor's degree is obtained from a non-English speaking institution should normally fulfil one of the following minimum English proficiency requirements:
 - IELTS 6.0**; or
 - Grade C or above in GCSE/GCE OL English; or
 - A TOEFL score of 80 (internet-based test) **; or
 - Band 6 in the Chinese Mainland's College English Test (CET) (a total score of 430 or above and the test result should be valid within two years); or
 - Other equivalent qualifications.
- * Applicant who had studied some Mathematics (or Mathematics related) courses in the undergraduates or former Colleges of Education may also be considered.
- ** The result of IELTS/TOEFL provided should be within two years and should be taken in test centres.

Targeted Taught Postgraduate Programmes Fellowships Scheme

(For Local Full-Time Students Only)

The application is by invitation (i.e. Students are required to first obtain an admission offer from the programme before invited to apply for the fellowship.) The fellowship students are required to pay a minimum tuition fee of HK\$42,100 for the whole programme of 2024 cohort.



Master of Arts in Music Education

MA(ME) | A1M054 (1-year Full-time)/
C2M005 (2-year Part-time)

Programme Leader: Dr Matthew Doran THIBEAULT

Enquiry Hotline: (852) 2948 8050

✉ mame@eduhk.hk



➤ www.eduhk.hk/mame or
www.eduhk.hk/cca
(Please refer to the website for the
most up-to-date programme
information)

Introduction

This programme provides a solid subject-based grounding for practitioners in the music profession while at the same time satisfies their need in further developing understanding in thinking, research and practice in music education relevant to their professional roles.

Programme Aims

The programme aims to deepen and strengthen students' professional aptitude in their chosen music domain such as composition, performance, or research; cultivate synergy between subject and pedagogical strengths in music; and help students develop and apply skills in creative and critical thinking, research and arts practice to the professional fields of music and music education.

Medium of Instruction

The medium of instruction is mainly English. Chinese is only adopted as part of the language of instruction for relevant courses, on a need basis only.

Programme Structure

This programme comprises 24cps and is divided into two areas of study:

Component	Credit Points
Core (3 courses)	9
Electives (5 courses)	15
Total	24



All participants are required to take the Core courses (9 cps) plus any 5 courses (15 cps) from the Electives.

Course Code	Course Title
CORE (9cps)	Research Methods in Music
	Socio-Psychological Perspectives in Music & the Arts
	Independent Project
ELECTIVE (15cps)	Techniques & Styles in Contemporary Music
	Performance Psychology and Research Issues
	Conducting and Performance Leadership
	Contemporary Approaches to Music Teaching and Learning
	Seminars in Cultural Ecology and Arts Dissemination
	Music Performance Teaching and Learning
	Pedagogies of Improvisation in Music Learning
	Composition Pedagogy
	Stylistic Studies in Performance Practice
	Arts Management in Hong Kong
Technology in Music Teaching and Learning	

Courses take place mostly in the evenings at the Tai Po Campus.

Tuition Fee

This programme is offered on a self-funded basis. The tuition fee for the whole programme is HK\$155,000, which is provisional and subject to adjustment. Tuition fees paid are normally not refundable or transferrable. Extension fees will be charged to students who have to extend their studies beyond the normal duration (i.e. 1 year for full-time and 2 years for part-time).

Intake Structure

There is one intake in September each year. Online application will be open from early November to February. Late applications will only be considered on a space- available basis.

Entrance Requirements

Applicants should normally hold a recognised Bachelor's degree or equivalent with music as either major or minor subject. Shortlisted applicants may be required to attend an interview.

Applicants whose entrance qualification is obtained from an institution in a non-English speaking system should normally fulfill one of the following minimum English proficiency requirements which may be subject to adjustment:

- IELTS 6.0; or a TOEFL score of 80 (internet-based test)
The results of IELTS/TOEFL are considered valid for two years and should be taken in test centres (tests taken online such as IELTS indicator/IELTS Online and TOEFL Home Editions are NOT accepted) ; or
- Grade C or above in GCSE / GCE OL English ; or
- Band 6 in the Chinese Mainland's College English Test (CET) (a total score of no lower than of 430 or above and the test result should be valid within two years)
- Other equivalent qualifications.

Notes: Holders of degrees from most Hong Kong tertiary institutions are exempted from this requirement.

Scholarships

Scholarships will be awarded to candidates(s) possessing outstanding academic merit and musical performance.



For details, please visit the MA(ME) website.
<https://www.eduhk.hk/mame/admission.htm>

Targeted Taught Postgraduate Programmes Fellowships Scheme

(For Local Full-Time and Part-Time Students Only)

The application is by invitation (i.e. Students are required to first obtain an admission offer from the programme before invited to apply for the fellowship.) The fellowship students are required to pay a minimum tuition fee of HK\$42,100 for the whole programme of 2024 cohort.



Academic Collaboration Opportunity

Selected MA(ME) students may qualify to pursue the Master of Music (Performance Teaching) degree offered by the Melbourne Conservatorium of Music of University of Melbourne (Australia).

For details, please visit the MA(ME) website.

Master of Arts in Personal Finance Education

MA(PFE) | A1M101 (1-year Full-time)/
C2M032 (2-year Part-time)

Programme Leader: Dr TAN Weiqiang

Enquiry Hotline: (852) 2948 8727

✉ mapfe@eduhk.hk



➤ www.eduhk.hk/mapfe

(Please refer to the website for the most up-to-date programme information)

Introduction

The Master of Arts in Personal Finance Education [MA(PFE)] is the first Master programme in personal finance education in Hong Kong, focusing on both theoretical financial knowledge and workplace application skills to improve participants' competitiveness in the market. Participants will be given opportunities to gain practical and first-hand experience in transferring financial knowledge to individuals and the tools to enable them to be professional financial educators, equipping the skills to operate effectively in the three areas of education, business, and society. Riding on the strong demand for financial talents in mainland China and Hong Kong, we expect the graduates in the programme will have a wide range of employment prospects, including banking and financial institutions, government agencies, educational institutions, and mass media.

Programme Structure

The programme comprises 24 credit points. Participants normally take one year (full-time mode) or two years (part-time mode) to complete the programme. Classes may be scheduled on weekday daytime / evenings, weekends and/or during long holidays at Tai Po Campus, Tseung Kwan O Study Centre, North Point Study Centre and/or Kowloon Tong Satellite Study Centre as decided by the University.

合辦：



贊助機構：



撥款及監察機構：



香港公益金
THE COMMUNITY CHEST



Programme Aims

The MA(PFE)'s objectives are to:

- a. equip participants with professional knowledge in finance and necessary skill sets for investment analysis;
- b. enable participants to formulate and implement comprehensive personal finance education for individuals with different financial backgrounds and needs in a society of prolific lifestyles;
- c. focus on necessary financial knowledge in personal finance and the application of knowledge and skills required for effective financial decision-making, financial planning and hence training, education, and knowledge transfer; and
- d. equip participants to meet their career goals in either the financial services sector or financial-related educational/training sector.

Upon successful completion of the programme, participants should be able to:

- a. demonstrate solid understanding and a broad spectrum of knowledge and concepts in finance and financial management;
- b. critically evaluate the trend and development of financial and investment markets in a global perspective;
- c. integrate financial knowledge in solving personal financial problems and ethical decision making;
- d. possess high professionalism, creativity and competencies as a financial literacy educator; and
- e. transfer and apply research methods and financial knowledge in the context of professional work.

Medium of Instruction

The medium of instruction is English.

Tuition Fee

The programme is offered on a self-financed basis. The tuition fee for the whole programme is HK\$161,000. Tuition fees paid are normally not refundable or transferrable. Extension fees will be charged to students who have to extend their studies beyond the normal duration.

Programme Curriculum

Students are required to complete 24 credit points for graduation. The normal study pathway is shown as below:

Full-time mode:

Year	Semester	Courses	Credit Points (CPs)
1	I	Core: Global Financial Market and Instruments (3 cps) Core: Quantitative Analysis for Financial Studies (3 cps) Core: FinTech and Consumer Finance (3 cps) Core: Financial Literacy Education for All Aged Groups (3 cps)	12
	II	Core: Financial Risk Management for Investment (3 cps) Core: Research Methods in Finance (3 cps) Core: Ethical Issues and Decision Making in Personal Finance (3 cps)	9
		*Elective: Investment Analysis and Portfolio Management for Personal Needs (3cps) or Internship Programme in Personal Finance Education (3 cps) or Contemporary Issues in Personal Finance Education (3 cps)	3
Total Credit Points			24

* Choose one out of three elective courses. The offering of elective courses and the quota offered is subject to the Programme's decision and students enrolment. It may vary in each academic year.

Part-time mode:

Year	Semester	Courses	Credit Points (CPs)
1	I	Core: Global Financial Market and Instruments (3 cps) Core: Quantitative Analysis for Financial Studies (3 cps)	6
	II	Core: Financial Risk Management for Investment (3 cps) Core: Research Methods in Finance (3 cps)	6
2	I	Core: FinTech and Consumer Finance (3 cps) Core: Financial Literacy Education for All Aged Groups (3 cps)	6
	II	Core: Ethical Issues and Decision Making in Personal Finance (3 cps) *Elective: Investment Analysis and Portfolio Management for Personal Needs (3 cps) or Internship Programme in Personal Finance Education (3 cps) or Contemporary Issues in Personal Finance Education (3 cps)	6
Total Credit Points			24

* Choose one out of three elective courses. The offering of elective courses and the quota offered is subject to the Programme's decision and students enrolment. It may vary in each academic year.

There are two options for students to complete the 24 credit points for graduation:

1. Students who opt for coursework will need to take 8 courses

Component	Credit Points
All 7 core courses and 1 Elective	24
Total	24

2. Students who have sufficient research competencies, obtained approval, and opt for the Research Project can be exempted from taking the Research Methods in Finance and the elective course. Their study path is as follows:

Component	Credit Points
6 core courses	18
Research Project	6
Total	24

Entrance Requirements

- a. Applicants should normally hold a recognised Bachelor's degree or other equivalent qualifications.
- b. Applicants whose entrance qualification is obtained from an institution in a non-English speaking system should normally fulfill one of the following minimum English proficiency requirements:
 - Overall score of IELTS 6.0 (academic version) (the test should be taken in test centres and the result should be valid within two years); or
 - Grade C or above in GCSE/GCE OL English; or
 - TOEFL score of 80 (internet-based test) (the test should be taken in test centres and the result should be valid within two years); or
 - Band 6 in the Chinese Mainland's College English Test (CET) (a total score of 430 or above and the test result should be valid within two years); or
 - Other equivalent qualifications.
- c. Shortlisted applicants may be required to attend an interview.



For details, please visit:
[www.eduhk.hk/acadprog/EnReq\(Pg\)](http://www.eduhk.hk/acadprog/EnReq(Pg))



Master of Arts in STEM Education

MA(STEM Ed) | A1M095 (1-year Full-time)/
C2M028 (2-year Part-time)

Programme Leader: Dr YEUNG Chi Ho Bill

Enquiry Hotline: (852) 2948 7694

✉ chyeung@eduhk.hk/mastem@eduhk.hk

📍 Department of Science and Environmental Studies, Room D3-1/F-37, The Education University of Hong Kong, 10 Lo Ping Road, Tai Po, New Territories, Hong Kong



👉 <https://mastem.eduhk.hk>

(Please refer to the website for the most up-to-date programme information)

Introduction

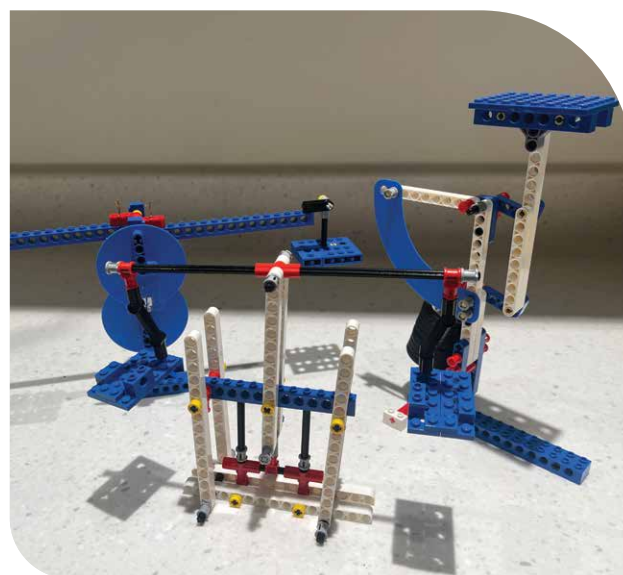
The major aim is to provide a postgraduate education programme leading to a Master's degree for university graduates and in-service teachers aspiring to become leaders and competent practitioners in STEM education. The Department of Science and Environmental Studies is collaborating with the Department of Mathematics and Information Technology of the EdUHK in offering this programme. This will broaden the expertise of the teaching team and expand the range of the course contents, reflecting the importance of interdisciplinary collaboration in STEM education.

Programme Aims

- promote a holistic and comprehensive understanding of STEM education;
- develop competence in promoting STEM education through curriculum integration and integrated learning;
- equip participants with the knowledge and skills for applying technology and engineering design in solving problems;
- develop participants' pedagogical content knowledge for designing instructions and assessment for integrative STEM education;
- develop leadership and cultivate a spirit of innovation in promoting school-based STEM education.

Programme Structure

The programme comprises 24 credit points (cps). Students normally take one year (Full-time) or two years (Part-time) to complete the programme. They need to attend an average of two to four classes per week (depending on the study mode) which may be held in the daytime/evening on weekdays and/or Saturdays at the Tai Po Campus, Tseung Kwan O Study Centre, North Point Study Centre, and/or Kowloon Tong Satellite Study Centre as decided by the University.



Programme Curriculum

The programme comprises 6 core courses and 2 elective courses.

Component	Credit Points (CPS)
6 Core Courses	18
2 Elective Courses	6

Course Title	Credit Points (CPS)
Core Courses	18
STEM Education: Theoretical and Curricular Perspectives	3
Scientific Inquiry and Engineering Design	3
Technology in STEM Education	3
Principles and Methods in STEM Education Research	3
Developing Creativity and Innovation in STEM	3
Coding and Computational Thinking	3
Elective Courses	6
Elective Group I	3
Curriculum, Teaching and Assessment in STEM for Primary Schools OR	3
Curriculum, Teaching and Assessment in STEM for Secondary Schools	3
Elective Group II	3
Research Project OR	3
Internship	3

Medium of Instruction

The medium of instruction is English.

Tuition Fee

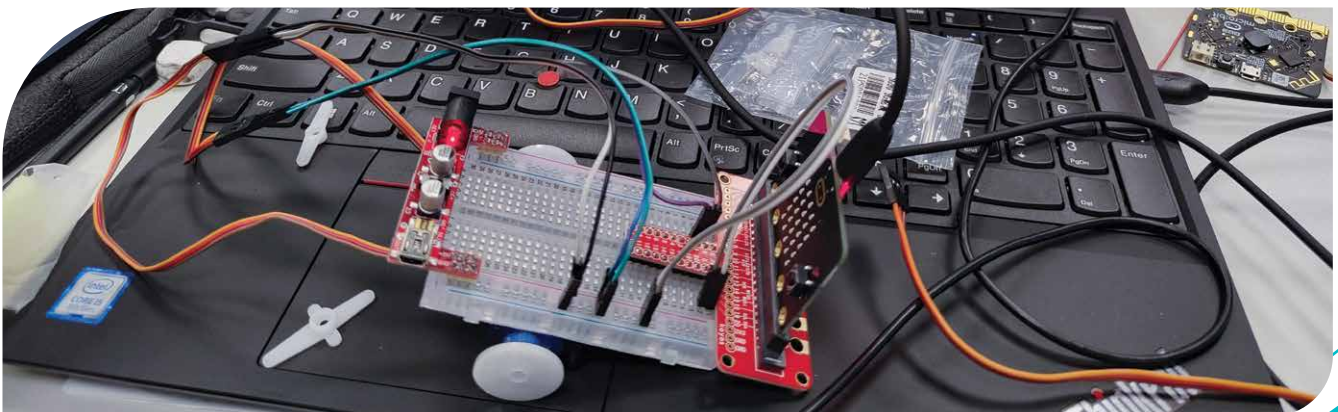
This programme is offered on a self-funded basis. The tuition fee for the whole programme is HK\$138,600, which is provisional and subject to adjustment. Tuition fees paid are normally not refundable or transferrable. Extension fees will be charged to students who have to extend their studies beyond the normal duration (i.e. 1 year for full-time and 2 years for part-time).

Entrance Requirements

- Applicants should normally hold a recognised Bachelor's degree or other equivalent qualifications. Shortlisted applicants may be required to attend an interview.
- Applicants whose entrance qualification is obtained from an institution in a non-English speaking system should normally fulfil one of the following minimum English proficiency requirements:
 - IELTS 6.0 (academic version); or
 - Grade C or above in GCSE / GCE OL English; or a TOEFL score of 80 (internet-based test); or
 - Band 6 in the Chinese Mainland's College English Test (CET) (a total score of 430 or above and the test result should be valid within two years); or
 - Other equivalent qualifications.

The results of IELTS/TOEFL provided **should be within two years** (i.e., for the 2024/25 intake, the IELTS/TOEFL test must be obtained on or after 1 Jan 2022); and

The results of IELTS/TOEFL **should be "taken in test centres"** (i.e., tests taken online such as IELTS indicator/ IELTS Online and TOEFL Home Editions are NOT accepted).



Master of Arts in Visual Arts Education and Creative Practice

MA(VAECF) | A1M098 | 1-year Full-time
Programme Leader : Dr HUNG Keung
Enquiry Hotline : (852) 2948 7139 / (852) 2948 7225
Fax : (852) 2948 7080
✉ mavaecp@eduhk.hk / hungkeung@eduhk.hk



➤ mavaecp.eduhk.hk/ or
www.eduhk.hk/cca
(Please refer to the website for the
most up-to-date programme
information)

Introduction

The Visual Arts educational environment is changing at a rapid pace both within formal educational institutions and outside them, and for all educational levels. Driven by many different factors, this is creating new challenges and new opportunities for existing art teachers, lecturers, educators, and creative practitioners. The Master of Arts in Visual Arts Education and Creative Practice [MA(VAECF)] programme is a unique and visionary initiative that draws upon a combination of academic and professional expertise within the Department of Cultural and Creative Arts (CCA) of The Education University of Hong Kong, and whose design reflects the University's combination of specialist knowledge and understanding of Hong Kong's educational environment and contemporary international approaches to education in the creative arts. Encouraging collaboration and interdisciplinary approaches to learning and research, this cutting-edge programme which will prepare students for future careers in visual arts, visual arts education and associated fields.

Programme Aims

- Prepare students for future careers in visual arts, visual arts education and associated fields within the context of an expanding and rapidly changing creative arts and educational sector;
- Provide professional level opportunities for artistic development, the cross-fertilisation of ideas and a trans-disciplinary approach to professional practice in the art and educational fields, fostering collaboration, and stimulating entrepreneurship and innovation; and
- Enable students to cultivate an advanced knowledge of relevant historical, cultural, philosophical, aesthetic and educational paradigms to support particular career paths.

Medium of Instruction

The medium of instruction is English.





Programme Structure

The MA(VAECF) is a 24-credit point (cp) programme comprising four “Core” courses (15 cps) and three “Elective” courses (9cps), structured as follows:

Core Courses (15cps)

- Contemporary Digital Media and Practices (3cps)
- Research Methods in Visual Arts Education (3cps)
- Research Methods in Artistic Practices (3cps)
- Capstone Project (6cps)

Elective Courses (9cps); three to be selected from:

- Critical Perspectives in Contemporary Arts Practices (3cps)
- Collaborative Art-making Practices (3cps)
- Independent Studies in Visual Arts (3cps)
- Art Criticism and Museum Experience (3cps)
- Arts Management in Hong Kong (3cps)

Tuition Fee

This programme is offered on a self-funded basis. The tuition fee for the whole programme is HK\$170,600, which is provisional and subject to adjustment. Tuition fees paid are normally not refundable or transferable. Extension fees will be charged to students who have to extend their studies beyond the normal duration (i.e. 1 year for full-time).

Intake Structure

There is one intake in September each year. Online application will be open from early November to February. Late applications will only be considered on a space-available basis.

Targeted Taught Postgraduate Programmes Fellowships Scheme

(For local full-time students only)

The application is by invitation (i.e. Students are required to first obtain an admission offer from the programme before invited to apply for the fellowship.) The fellowship students are required to pay a tuition fee of HK\$50,600 for the whole programme of 2024 cohort.



Entrance Requirements

- Applicants should normally hold a recognised Bachelor’s degree or other equivalent qualifications.
- Applicants whose entrance qualification is obtained from an institution in a non-English speaking system should normally fulfill one of the following minimum English proficiency requirements:

- IELTS score of 6.0; or
- Grade C or above in GCSE/GCE OL English; or
- A TOEFL score of 80 (internet-based test); or
- Band 6 in the Chinese Mainland’s College English Test (CET) (a total score of 430 or above and the test result should be valid within two years); or
- Other equivalent qualifications;

The results of IELTS/TOEFL provided should be within two years (i.e., for the 2024/25 intake, the IELTS/TOEFL test must be obtained on or after 1 Jan 2022) and should be “taken in test centres” (i.e., tests taken online such as IELTS indicator/IELTS Online and TOEFL Home Editions are NOT accepted).

- Shortlisted applicants may be required to attend an interview.

Scholarships

Eligible MA(VAECF) students will be nominated to apply for the scholarship after releasing assignment grades of first semester studies.



For details, please visit the MA(VAECF) website: mavaecp.eduhk.hk/application_and_admission/application_fee_tuition_fee_and_scholarship_application/

Master of Public Policy and Management

MPPM | A1M082 (1-year Full-time)

Programme Leader: Dr Lina VYAS

Enquiry Hotline: (852) 2948 7115/(852) 2948 7845

Fax: (852) 2948 8018

✉ vyaslina@eduhk.hk/mppm@eduhk.hk

📍 Department of Social Sciences and Policy Studies, Room B1-2/F-02, The Education University of Hong Kong, 10 Lo Ping Road, Tai Po, New Territories, Hong Kong



🔗 <https://www.eduhk.hk/ssps/mppm>

(Please refer to the website for the most up-to-date programme information)

Introduction

The Master of Public Policy and Management (MPPM) Programme is designed to train students in policy science, management, and policy analytics in readiness for leading roles in policy analysis and professional policy practice. Delivered by a team of distinguished specialists, the programme provides in-service professionals, policy practitioners and future public leaders with skills in policy analysis and evaluation, organisation analysis, management, strategic communications, project analysis, public governance, public sector management and development. The MPPM programme brings leading-edge learning of management issues including human resources, financial management and leadership while fostering students' capabilities and skills for future placement in professional settings.

Programme Aims

This programme aims to enrich and update students' academic knowledge, practical reasoning and critical judgement in public policy and management in Asia with special focus on the Greater China region. The programme intends to provide insight into public and social policies and management in both local and international contexts.

Programme Structure

The programme comprises 24 credit points (cps).

Component	Credit Points (CPS)
Core Courses	12
Elective Courses	12
Total	24

Specialisation I

Governance and Public Management

Students are trained with a solid basis in up-to-date public management and public sector reforms i.e. existing theoretical issues, empirical research, and effective applications. Students acquire a comprehensive understanding of effective leadership and management in public sector organisations.

Specialisation II

Social Policy

Students will acquire the knowledge of social policy systems in Asia and inspire them to design innovative social protection mechanisms for the betterment of human well-being.

Specialisation III

Higher Education Policy and Management

Students are equipped with both theoretical and applied knowledge, skills and competencies to enable them to understand the changing dimensions of the higher education landscape, key sector challenges, drivers of change, and comparative public sector response to sector governance and management.

Programme Curriculum

The programme comprises 24 credit points (cps).

(Students may choose any of the 4 Combinations of (1) 4 courses from Specialisation I in Governance and Public Management; (2) 4 courses from Specialisation II in Social Policy; (3) 4 courses from Specialisation III in Higher Education Policy and Management or (4) any 4 courses from Specialisation I, II and III without MPPM specialisation.).

Core Courses (12 cps)

- Research Methods for Policy Analysis and Evaluation
- Public Policy and Governance: Processes and Techniques
- Strategic Communication
- Organisational Behaviour and Development

Elective Courses (12cps)

Specialisation I: Governance and Public Management

- Managing Public Finance
- Public Administration and Management in Asia
- Project Appraisal and Impact Analysis
- Human Resource Management
- International Public Management
- Regulation and Regulatory Governance
- Environmental Policy and Governance
- Internship/Overseas Experiential Learning
- Creating Shared Value and Social Entrepreneurship

Specialisation II: Social Policy

- Management of Social Services
- Social Protection Arrangements
- Comparative Health Policy
- Social Policy and Aging
- Comparative Social Policy in Asia
- Poverty, Inequality and Social Policy
- Internship/Overseas Experiential Learning
- Creating Shared Value and Social Entrepreneurship

Specialisation III: Higher Education Policy and Management

- Advanced Seminar in Higher Education Policy and Governance
- Managing Universities in the Global Context: Policies and Strategies
- Quality Assurance and Management in Higher Education
- Comparative Social Policy in Asia
- Education and Society in Greater China and Asia
- Educational Leadership in the Tertiary Sector
- Internship/Overseas Experiential Learning
- Creating Shared Value and Social Entrepreneurship

Medium of Instruction

The medium of instruction is English.

Tuition Fee

This programme is offered on a self-funded basis. The tuition fee for the whole programme is HK\$155,900, which is provisional and subject to adjustment. Tuition fees paid are normally not refundable or transferrable. Extension fees will be charged to students who have to extend their studies beyond the normal duration.

Entrance Requirements

Applicants should normally hold a recognised Bachelor's degree or other equivalent qualifications. Applicants whose entrance qualification is obtained from an institution in a non-English speaking system should normally fulfill one of the following minimum English proficiency requirements:

- IELTS score of 6.0; or
- Grade C or above in GCSE/GCE OL English; or
- A TOEFL score of 80 (internet-based test); or
- Band 6 in the Chinese Mainland's College English Test (CET) (a total score of 430 or above and the test result should be valid within two years); or
- Other equivalent qualifications.

The results of IELTS/TOEFL provided should be within two years (i.e., for the 2024/25 intake, the IELTS/TOEFL test must be obtained on or after 1 Jan 2022); and

The results of IELTS/TOEFL should be "taken in test centres" (i.e., tests taken online such as IELTS indicator/IELTS Online and TOEFL Home Editions are NOT accepted).



Master of Science in Artificial Intelligence and Educational Technology

MSc(AI&EdTech) | A1M103 (1-year Full-time) / C2M034 (2-year Part-time)

Programme Leader: Dr Bai Shurui Tiffany

Enquiry Hotline: (852) 2948 7824

✉ mscait@eduhk.hk



➤ <https://www.eduhk.hk/mit/en/mscait>
(Please refer to the website for the most up-to-date programme information)

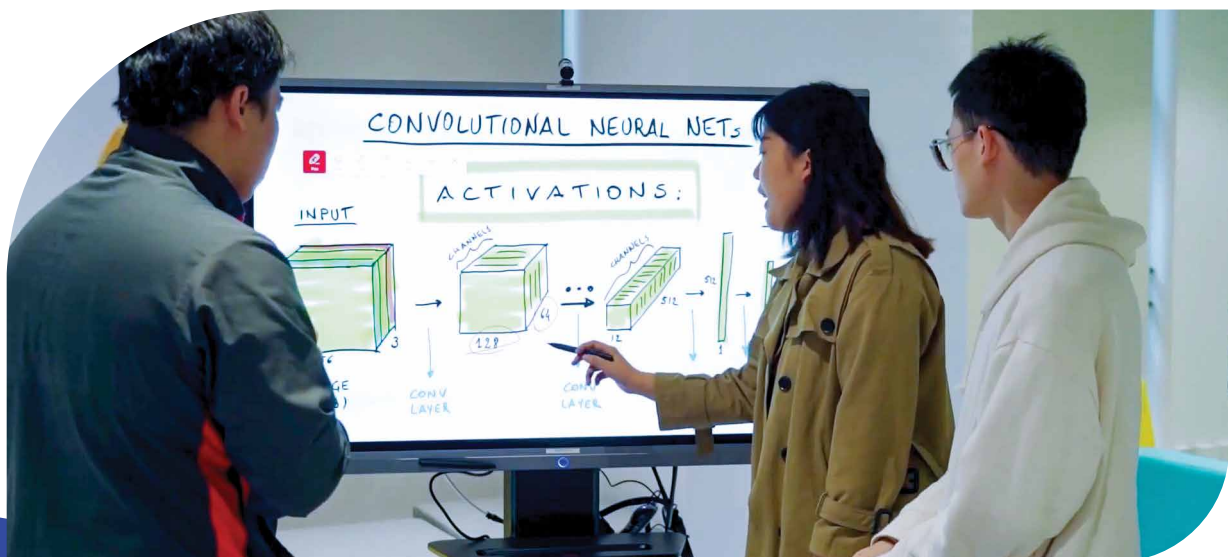
Programme Aims

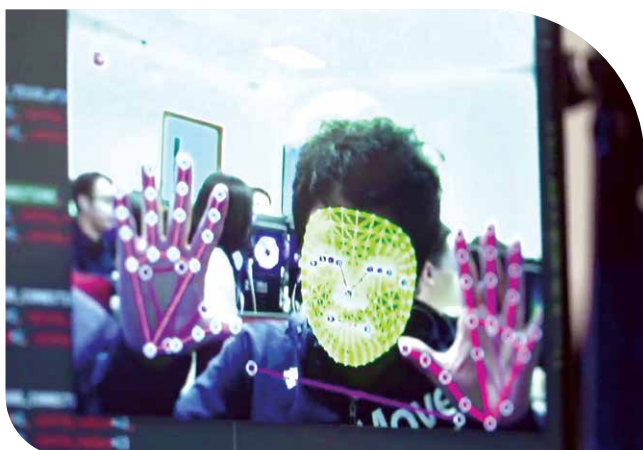
The programme aims to:

- provide participants with foundational knowledge in artificial intelligence and educational technology;
- develop participants' practical skills and capabilities in applying artificial intelligence and educational technology to solve real world problems with ethical awareness;
- equip participants with pedagogical frameworks, principles and approaches leveraged by artificial intelligence and educational technology for innovative curricular design and instruction; and
- empower participants to plan, conduct and evaluate educational research projects or create workable instructional solutions with artificial intelligence and educational technology by adopting appropriate research methods and approaches.

Programme Structure

It is a 24-credit-point (cp) programme comprising five core courses, seven elective courses and one project course. The five core courses will provide participants with knowledge and skills related to artificial intelligence (AI) and educational technology, theories and practice of innovative instructional designs, and methods of research and inquiry. To cater for individual interests in AI and educational technology knowledge and skills, participants are required to select 2 out of 7 elective courses.





Programme Curriculum

Component	Credit Points (CPS)
Core Courses	15
Artificial Intelligence in Education	3
Coding and Computational Thinking	3
Design of Innovative Learning Environments with Technology	3
Neural Networks and Deep Learning	3
Research Methods and Inquiry [^]	3
Elective Course	6
Advanced Programming for Artificial Intelligence Data	3
Creative Multimedia and Design	3
Internet of Things	3
Metaverse in Education and Society	3
Data Mining in STEM Education	3
Mobile Applications Design and Development	3
Probability and Statistics	3
Project Course	3
Independent Project [^]	3

[^] "Research Methods and Inquiry" is a pre-requisite course for "Independent Project".

Medium of Instruction

The medium of instruction is English.

Tuition Fee

This programme is offered on a self-funded basis. The tuition fee for the whole programme is HK\$145,200, which is provisional and subject to adjustment. Tuition fees paid are normally not refundable or transferrable. Extension fees will be charged to students who have to extend their studies beyond the normal duration (i.e. 1 year for full-time and 2 years for part-time).

Entrance Requirements

- Applicants should normally hold a recognised Bachelor's degree in educational technology, statistics, computer science and engineering related disciplines, or other equivalent qualifications.
- Applicants are required to have prior programming knowledge and skills. Shortlisted applicants may be required to attend an interview.
- Applicants whose entrance qualifications are obtained from a non-English-speaking institution's system should normally fulfil one of the following minimum English proficiency requirements:
 - IELTS 6.0*; or
 - Grade C or above in GCSE/GCE OL English; or
 - A TOEFL score of 80 (internet-based test)*; or
 - Band 6 in the Chinese Mainland's College English Test (CET) (a total score of 430 or above and the test result should be valid within two years); or
 - Other equivalent qualifications.

* The result of IELTS/TOEFL provided should be within two years and should be taken in test centres.

Targeted Taught Postgraduate Programmes Fellowships Scheme

(For Local Full-Time and Part-Time Students Only)

The application is by invitation (i.e. Students are required to first obtain an admission offer from the programme before invited to apply for the fellowship.) The fellowship students are required to pay a minimum tuition fee of HK\$42,100 for the whole programme of 2024 cohort.



Master of Social Sciences in Sports Coaching and Management

MSocSc(SCM)| A1M097 (1-year Full-time)/
C2M029 (2-year Part-time)

Programme Leader: Dr LEUNG Ka Man Carman

Enquiry Hotline: (852) 2948 7153

Fax: (852) 2948 7848

✉ mssscm@eduhk.hk

📍 Department of Health and Physical Education, D4-2/F-03, The Education University of Hong Kong, 10 Lo Ping Road, Tai Po, New Territories, Hong Kong



🔗 www.eduhk.hk/hpe/en/Programmes/Master-Programme/Master-Of-Social-Sciences-In-Sports-Coaching-And-Management.html

(Please refer to the website for the most up-to-date programme information)

Programme Aims

MSocSc(SCM) targets students who plan to pursue careers related to sports coaching and management. As a postgraduate programme, applicants are required to have basic knowledge in sports-related subjects or demonstrate outstanding performance at least in one sport before their admission.

Programme Aims

The programme aims to:

- promote a comprehensive understanding of sports coaching and management;
- enhance competence in coaching and management through various elements ranging from sports performance analysis to marketing strategies in sports industry; and
- develop leadership in sports coaching and/or management industry.

On successful completion of the programme, students will be able to:

- demonstrate the mastery and application of coaching and management ability in sports industry;
- synergise scientific and evidence-based strategies for sports coaching and management;
- develop leadership in planning and implementing coaching programme and/or policy in sports industry.

Programme Structure

The programme comprises 24-credit-points (cps) with 4 core courses (12 cps).

All students need to take 4 core courses (12 cps). Students should further take either 4 elective courses (12 cps), or 1 elective course (3 cps) plus a Master's Thesis (9 cps), to add up to 24 cps for graduation.

1-year Full-time/2-year Part-time

4 Core Courses	4 Elective Courses OR
	1 Elective Course and 1 Thesis



Programme Curriculum

The 4 core courses provide students with knowledge and skills related to sports coaching and management. To strengthen students' knowledge in different domains, a pool of 6 electives are provided for students to select for completing the programme.

For students who choose to work on the Master's Thesis, they will be assigned a supervisor who will guide them through a sports coaching and management-related research project.

Component	Credit Points (CPS)
Core Courses	
Administration and Management Leadership in Sports	3
Research Methodology in Sports Coaching and Management	3
Theory and Practice of Sports Coaching	3
Experiential Learning in Sports Industry	3
Elective Course	
Conditioning and Injury Prevention	3
Current Issues and Trends in Sports Coaching and Management	3
Mental Preparation and Performance in Sports	3
Physiology and Nutrition for High Performance	3
Sports Marketing and Business Management	3
Sports Policy and Development	3
Thesis	
Master's Thesis	9

Tuition Fee

This programme is offered on a self-funded basis. The tuition fee for the whole programme is HK\$145,200, which is provisional and subject to adjustment. Tuition fees paid are normally not refundable or transferrable. Extension fees will be charged to students who have to extend their studies beyond the normal duration.

Medium of Instruction

The medium of instruction is English.

Targeted Taught Postgraduate Programmes Fellowships Scheme

(For local full-time and part-time students only)

The application is by invitation (i.e. Students are required to first obtain an admission offer from the MSocSc(SCM) programme before being invited to apply for the fellowship). The fellowship students are only required to pay a tuition fee of HK\$42,100 for the whole programme of the 2024 cohort.



Student Awards and Scholarship

MSocSc(SCM) students with outstanding academic performance and/or sports achievement(s) will be nominated to apply for relevant awards/scholarships.

Entrance Requirements

- Applicants should normally hold a recognised Bachelor's degree in sports or a closely related subject; or local elite athletes or Regional/National elite athletes with a recognised Bachelor's degree or other equivalent qualifications; and
- Applicants whose entrance qualification was obtained from an institution in a non-English speaking system should normally fulfil one of the following minimum English proficiency requirements (Note):
 - IELTS 6.0**; or
 - Grade C or above in GCSE/GCE OL English; or
 - a TOEFL score of 80 (internet-based test)**; or
 - Band 6 in the Chinese Mainland's College English Test (CET) (a total score of 430 or above and the test result should be valid within two years); or
 - Other equivalent qualifications.

Note: Regional/National elite athletes who do not meet the English Language Requirements of the University:

- will be considered for admission on an individual basis; and if selected,
- will be required to successfully complete an additional English enhancement course offered by the Centre for Language in Education (CLE) of the University during the study period on a self-financing basis in order to meet the graduation requirements.

* The results of IELTS/TOEFL provided should be within two years (i.e., for the 2024/25 intake, the IELTS/TOEFL test must be obtained on or after 1 Jan 2022);

The results of IELTS/TOEFL should be "taken in test centres" (i.e., tests taken online such as IELTS indicator/IELTS Online and TOEFL Home Editions are NOT accepted).

- Eligible applicants may be invited for admission interview.

Master of Social Sciences in Therapeutic Play and Well-Being

MSocSc(TPWB) | A1M111 (1.5-year Full-time)/
C2M041 (2-year Part-time)
Programme Leader: Dr Chung Ming Yan Louisa
Enquiry Hotline: 2948 7679
Fax: (852) 2948 7848
✉ msstpwb@eduhk.hk



➤ www.eduhk.hk/hpe/en/Programmes/Master-Programme/Msstpwb.html
(Please refer to the website for the most up-to-date programme information)

Introduction

The Master of Social Sciences in Therapeutic Play and Well-Being [MSocSc(TPWB)] [遊戲治療及身心健康社會科學碩士] (One and a half-year Full-time / Two-year Part-time) provides a series of courses specialising in therapeutic play. It allows students to interact academically and professionally across fields, thereby enriching their learning experiences, broadening their horizons, benefiting their whole-person development and increasing their competitiveness and employability.

Programme Aims

The MSocSc(TPWB), targets students who plan to pursue careers in the field of therapeutic play. Applicants with recognised Bachelor's degrees in psychology, nursing, education, social work or health related programmes are eligible for the MSocSc(TPWB).

The MSocSc(TPWB) is a master degree to train candidates the qualified play practitioners who work with children with emotion or behavioural problems at school or at home. Graduates are expected to pursue a career in play and well-being promotion for populations varying from community clients to clinical patients. The programme will award graduates to be a Certified Practitioner in Therapeutic Play Skills in Play Therapy United Kingdom (PTUK) and such qualification is accredited by the Professional Standard Association (PSA).



Programme Structure

The MSocSc(TPWB) comprises 24 credit points (cps) with three core courses (9 cps) and three elective courses (9 cps). Students are required to further complete a total of 100 hours of practicum (6 cps) with satisfactory feedback (i.e., grade "Pass" or above) for graduation.

Applicants who are Certified Practitioners in Therapeutic Play Skills / obtained Postgraduate Certificate in Therapeutic Play Skills or equivalent, can apply for credit transfer.

Domain	Credit points (cps)
Core Courses (3 courses)	9
Elective Courses (3 courses)	9
Practicum	6
Total cps	24

Programme Curriculum

Component	Credit Points (CPS)
Core Courses	
Orientation to Setting Up Play Practice Using Non-Directive Play Therapy	3
Using Symbolic Play Therapy Tools and Metaphor Safely	3
Using Expressive Arts Therapy to Reach the Unconscious	3
Elective Courses (choose 3 courses)	
Mindfulness	3
Child and Adolescent Health Education	3
Stress and Coping	3
Therapeutic Use of Music and Imagery	3
Musicking for Life and Well-being	3
Creating a Musical Third Space in School	3
Therapeutic Narrative Studies	3
The Linguistics of Happiness	3
Writing the Authentic Self	3
Practicum	
Therapeutic Play Skills	6

Medium of Instruction

English

Tuition Fee

HKD \$163,200

Entrance Requirements

- Applicants should normally hold a recognised Bachelor's Degree in psychology, nursing, education, social work, health-related programmes, or other equivalent qualifications;
 - Applicants whose entrance qualifications are obtained from an institution in a non-English speaking system should normally fulfil one of the following minimum English proficiency requirements:
 - Overall score of IELTS 6.0[#] (academic version); or
 - TOEFL score of 80 (internet-based test)[#]; or
 - Band 6 in the Chinese Mainland's College English Test (CET) (a total score of 430 or above and the test results should be valid within two years); or
 - Grade C or above in GCSE / GCE OL English; or
 - Other equivalent qualifications.
- [#] The results of IELTS/TOEFL provided should be within two years (i.e., for the 2024/25 intake, the IELTS/TOEFL test must be obtained on or after 1 Jan 2022); and
- [^] The results of IELTS/TOEFL should be "taken in test centres" (i.e., tests taken online such as IELTS indicator/IELTS Online and TOEFL Home Editions are NOT accepted).
- Shortlisted applicants will be required to attend an interview.



Postgraduate Diploma in Education (Primary)

PGDE(P)| A1P014 (1-year Full-time) /
C2P035 (2-year Part-time)

Programme Leader: Dr SONG Yanjie

Year Coordinator: Dr CHAN Chi Keung

Enquiry Hotline: (852) 2948 6886 / (852) 2948 8036

Fax: (852) 2948 7161

✉ pgdeadmission@eduhk.hk / pgdep@eduhk.hk



➤ www.apply.eduhk.hk/pgde/Primary
(Please refer to the website for the most up-to-date programme information)

Programme Aims

This programme prepares university graduates to become competent and confident teachers in primary schools in Hong Kong. It provides opportunities for participants to develop the knowledge, skills, and attitudes required of fully qualified primary school teachers, together with an understanding of the responsibilities and obligations of belonging to the teaching profession. In addition, the programme seeks to foster a commitment of the participants to their students and to lifelong professional development.

Programme Structure*

This programme is delivered in two different modes: One-year Full-time (FT PGDE(P)) and Two-year Part-time (PT PGDE(P)). It is a modularised programme normally consisting of 30-33 credit points (cps). Participants of FT PGDE(P) are normally required to attend classes during the week (Monday to Saturday), with some evening sessions. Participants of PT PGDE(P) are normally required to attend sessions on some weekday evenings and Saturdays. Classes will be held in Tai Po Campus and/or Tseung Kwan O Study Centre/North Point Study Centre/Kowloon Tong Satellite Study Centre or Sports Centre as decided by the University. The programme comprises a programme orientation and the following components:

Teaching Subject Study 1 - Subject Methods	3 cps
Teaching Subject Study 2 - Subject Methods	3 cps
Education Studies	12 cps
Elective Studies	6-9 cps
Field Experience	6 cps

* Subject to change owing to the curriculum review. Applicants should refer to the PGDE(P) admission website for updated information.

Programme Curriculum*

Teaching Subject Studies

Teaching Subject Studies (TSS) are focused on the primary curriculum, teaching methodologies and special features of the subjects. Participants will normally choose two Teaching Subject Studies, TSS1 and TSS2. TSS1 is the subject in which participants already have substantial relevant knowledge from their first degree. TSS2 is the participants' chosen second teaching area. Participants who study English have to study One-TSS Route (English) and have no credit points to study a second subject. Participants who cannot speak or read Chinese can choose only the One-TSS Route (English). Participants who study TSS1 Mathematics have the choice to study One-TSS Route (Mathematics) or TSS1 Mathematics and a TSS2 subject. Subject to sufficient demand, the following TSS1 and TSS2 may be offered in the 2024/25 academic year:

- Chinese
- English (One-TSS Route)
- General Studies (Humanities and Science)[#]
- Information Technology (TSS2 only)
- Mathematics (One-TSS Route or TSS1 and TSS2)
- Music (FT only)
- Physical Education
- Putonghua
- Special Needs (FT TSS2, PT TSS1 or TSS2)
- Visual Arts (FT TSS1 only)

[#] Subject to approval

Immersion Programme

To enhance the language proficiency of participants in English/Putonghua, a compulsory immersion programme will be arranged in Semester One for FT PGDE(P) participants who choose English/Putonghua as their TSS1. Details of the immersion programmes will be announced after the commencement of the full-time programme.

Information Technology Competency in Education (ITCE)

Before graduation, participants are required to:

1. complete and pass all the required courses in the programme to demonstrate the attainment of ITCE; and
2. complete and pass at least one of the followings:
 - a) IT e-Portfolio Checking and a reflective statement
 - b) Student Teacher Education Program (STEP) and a reflective statement
 - c) Artificial Intelligence Literacy (AIL) program and a reflective statement

Medium of Instruction

The medium of instruction is Chinese and/or English. Applicant's adequate proficiency in both Chinese and English is required. English is adopted as the language of instruction for relevant courses, as appropriate.

TSS1 English participants are required to take Education Studies core courses in English, if available. Participants of other Teaching Subject Studies can choose to take additional language courses to enhance their English proficiency, if desired.

Entrance Requirements

To be eligible for admission, applicants should normally:

1. hold a recognised Bachelor's degree which includes a field of study relevant to their chosen Teaching Subject Study 1*, or equivalent;
2. have passed the admission interview/subject test(s) and/or language test(s), where required; and
3. be serving teachers in local primary schools (for PT PGDE(P)).

*1 Applicants for English who do not hold a degree majoring in English are also welcome to apply.

*2 Applicants for General Studies (GS) should normally hold a degree in an area with strong relevancy to at least one of the six strands of GS curriculum. According to the six strands of GS curriculum, applicants who hold a degree majoring in one of the following disciplines/areas will be firstly considered.

- (i) Science (e.g. physics, chemistry, biology; or specialised areas such as biochemistry, environmental science, applied sciences);
- (ii) Social Sciences (e.g. sociology, politics, psychology, public administration, policy studies, geography, social work, etc.);
- (iii) Humanities (e.g. history);
- (iv) Computer Studies and Information Technology; and
- (v) Education (including majors with thematic focus in education).

Other applicants who do not hold a degree majoring in any of the above but meet the minimum admission requirements for GS as TSS2 may also be considered.

*3. Applicants for Putonghua should normally hold a degree majoring in Linguistics/Language Studies or related disciplines (申請人必須具備與語言學或語言學習相關的學位). Other applicants who do not hold a degree majoring in any of the above but meet the minimum admission requirements for Putonghua as TSS2 may also be considered.

*4. Applicants for Special Needs should normally hold a degree majoring in Special Needs/Psychology/Counselling/Social Psychology/Social Work/Applied Social Studies and/or related subjects.

(Note: For part-time applicants, it is at your discretion to invite your employer/principal to complete a recommendation form which is available on the website. Priority of admission will be given to applicants who are recommended by their employers/principals.)



Admission Requirements for Teaching Subject Study 2 (TSS2)

TSS2	Minimum Admission Requirements
Chinese	A pass in Chinese Language in the HKCEE, or Level 3 in Chinese Language in the HKDSE, or equivalent
General Studies	Level 3 in at least one Science/Social Sciences subject in the HKDSE, or a pass in Science/Social Sciences/Humanities in the HKALE, or equivalent
Information Technology	A pass in Computer Studies/Information Technology/Computer and Information Technology/Mathematics in the HKCEE, or Level 3 in Information and Communication Technology/Mathematics in the HKDSE, or equivalent
Mathematics	A pass in Mathematics in the HKCEE, or Level 3 in Mathematics in the HKDSE, or equivalent
Music	Satisfactory performance in a subject test
Physical Education	Grade D in Physical Education in the HKCEE, or Level 3 in Physical Education in the HKDSE, or equivalent; or satisfactory performance in a subject test
Putonghua	Level 3 in the Language Proficiency Assessment for Teachers (Putonghua LPAT) conducted by the HKEAA; or Grade 2B in the Putonghua Shuiping Ceshi (PSC) conducted by the State Language Commission (國家語言文字工作委員會普通話水平測試); or a pass in the Test of Advanced Proficiency in Putonghua (TAPP) conducted by the HKEAA in 2008 or before (香港考試及評核局普通話高級水平測試)
Special Needs	Level 3 in at least one subject in the HKDSE, or a pass in at least one subject in the HKALE, or equivalent

Tuition Fee

The listed below are provisional and subject to adjustment:

Full-time PGDE Programmes	Part-time PGDE Programmes
Local students: HK\$42,100 per annum	Local students: HK\$21,050 per annum
Non-local students*: HK\$145,000 per annum	Non-local students*: HK\$72,500 per annum

* Starting from the 2019/20 intake cohort, a new definition of Non-local Students (NLS) has been adopted in accordance with the HKSAR Government policy. For details, please visit our website (www.apply.eduhk.hk/pgde/fees)



Extension fees will be charged to participants who have to extend their studies beyond the normal duration. Full-time participants who choose English or Putonghua as their Teaching Subject Study 1 will be required to attend an Immersion Programme. This is a compulsory part of the programme which is heavily subsidised by the University and by other sources of funding. However, participants are required to contribute part of the cost.



Teaching Requirements for Field Experience

The medium of instruction in the vast majority of Hong Kong schools is Cantonese and/or English. Participants are required to possess a proficient level of language skills (oral, listening and written) to enable them to perform the duties during Field Experience.

For Full-time PGDE(P) Participants

Full-time participants will be arranged to undertake 4[#] and 8 weeks of full-time block practice in Semester One and Two respectively in local Primary Schools.

The teaching load for participants with Teaching Subject Studies 1 & 2 is normally 12-16 periods per week/per 5 to 7-day cycle (with a minimum of 4 periods per Teaching Subject Study) throughout the block practice period.

For One-TSS route participants, they are required to have at least 8-12 periods of their chosen TSS per week/per 5 to 7-day cycle.

except that FT PDGE(P) participants who have chosen English or Putonghua as their TSS1 will take part in the compulsory immersion programme in Semester One.

For Part-time PGDE(P) Participants

The part-time programme is primarily designed for serving teachers. Participants in the programme are required to fulfill the following teaching requirements for Field Experience:

1. About teaching periods

(a) For participants having a full-time teaching post in primary schools^{note 1}

They are required to have a minimum of 4 periods^{note 2} per week/per 5 to 7-day cycle for each of the two chosen Teaching Subject Studies during the course of study in the programme.

(b) For participants without a relevant teaching post

They are required to make own arrangements to undertake 6 consecutive weeks of full-time block practice in primary schools^{note 1} during the FE supervision period^{note 3} in each FE and teach at least 12 periods^{note 2} per week/per 5 to 7-day cycle for the two chosen Teaching Subject Studies (with a minimum of 4 periods per subject) throughout the block practice period.

For One-TSS route participants, they are required to have at least 8 periods^{note 2} of their chosen TSS per week/per 5 to 7-day cycle.

2. About class setting and class size

All participants are required to conduct teaching/teaching practice in regular class settings with a minimum 10 pupils in a class^{note 4}.

3. About teaching mode

All participants are required to conduct teaching/teaching practice in simulated mode, virtual mode (synchronous and/or asynchronous modes) and authentic mode of classroom teaching as required by the programme/subject. In case of prolonged class suspension that the requirements of the authentic mode of classroom teaching cannot be fulfilled, an Extended School Attachment will need to be arranged.

Note 1: It refers to local primary schools adopting local primary school curriculum.

Note 2: Each period normally refers to a 30-40 minutes duration.

Note 3: FE Supervision period is normally from November to early May of the academic year.

Note 4: For special schools, the minimum number of pupils in a class is 8 according to the actual class size.

Notes to PT PGDE(P) Participants choosing Special Needs as a Teaching Subject Study (TSS)

For Teaching Subject Study of Special Needs, the teaching periods should be arranged in another chosen Teaching Subject Study to demonstrate understanding of and to cater for pupils with learning difficulties in classes. For example, a participant with TSS in General Studies and Special Needs is required to conduct Field Experience in General Studies subject during the course of study in the programme/throughout the block practice period.

Postgraduate Diploma in Education (Secondary)

PGDE(S)| A1P015 (1-year Full-time)/
C2P037 (2-year Part-time)

Programme Leader: Dr CHAN Man Ho

Enquiry Hotline: (852) 2948 6886/(852) 2948 7684

Fax: (852) 2948 7161

✉ pgdeadmission@eduhk.hk



➤ www.apply.eduhk.hk/pgde/Secondary
(Please refer to the website for the most up-to-date programme information)

Programme Aims

This programme prepares university graduates to become competent and confident teachers in secondary schools in Hong Kong. It provides opportunities for participants to develop the knowledge, skills, and attitudes required of fully qualified secondary school teachers, together with an understanding of the responsibilities and obligations expected of members of the teaching profession. In addition, the programme seeks to foster a commitment of the participants to their students and to lifelong professional development.



Programme Structure*

This programme is delivered in two different modes: One-year Full-time (FT PGDE(S)) and Two-year Part-time (PT PGDE(S)). It is a modularised programme consisting of 30-33 credit points (cps). Participants of FT PGDE(S) are normally required to attend classes during the week (Monday to Saturday) with some evening sessions. Participants of PT PGDE(S) are normally required to attend two/three 3-hour/4-hour classes per week, on weekday evening(s) starting from 6:30 p.m. and Saturday morning and/or afternoon in Tai Po Campus/Tseung Kwan O Study Centre/North Point Study Centre/Kowloon Tong Satellite Study Centre and/or Sports Centre as decided by the University. The programme comprises a programme orientation and the following components:

Major Subject Studies - Subject Methods*	6/9 cps
Education Studies	12 cps
Elective Studies - Core and General*	6/9 cps
Field Experience	6 cps

* Participants majoring in English will study 9 cps of Major Subject Studies, 3 cps of Elective Studies (Core) and 3 cps of Elective Studies (General). Participants of History Major will study 6 cps of Major Subject Studies 6 cps of Elective Studies (Core) and 3 cps of Elective Studies (General). Participants of Design and Technology & Home Economics/Technology and Living Major will study 6 cps of Major Subject Studies, 9 cps of Elective Studies (Core), and as a result, they are not required to take Elective Studies (General) course.

* Subject to change owing to the curriculum review. Applicants should refer to the PGDE(S) admission website for updated information.

Programme Curriculum*

Major Subject Studies – Subject Methods

Participants are required to take one subject as Major Subject Studies, which should normally be the major subject in their degree studies (please refer to the entrance requirements for details). Subject to sufficient demand, the following subjects may be offered in the 2024/25 academic year:

Major Subject Studies (MSS)

- Chinese
- Design and Technology
- English
- History (for FT mode only)
- Home Economics/Technology and Living
- Information Technology (for PT mode only)
- Physical Education (for FT mode only)
- Science (for PT mode only)
- Visual Arts (for FT mode only)

Immersion Programme

To enhance the English proficiency of participants, a compulsory immersion programme will be arranged normally in Semester 1 for FT PGDE(S) participants who choose English as their MSS. Details of the immersion programme will be announced after the commencement of the full-time programme.

IT Competency in Education (ITCE)

Before graduation, participants are required to:

- 1) pass all the required courses in the programme to demonstrate the attainment of ITCE; and
- 2) complete and pass the IT e-Portfolio (ITeP) or Student Teacher Education Program (STEP) or Artificial Intelligence Literacy (AIL) program for graduation.



For detailed information, please refer to www.eduhk.hk/mit/itce/

Medium of Instruction

The medium of instruction is Chinese and/or English. Applicant's adequate proficiency in both Chinese and English is required. Participants will be required to take 25% (about 6 credit points) of the total programme credit points (excluding those for the Field Experience course) through the medium of English. English major participants are required to take all courses through the medium of English, if available.

* Subject to change owing to the curriculum review. Applicants should refer to the PGDE(S) admission website for updated information.

Tuition Fee

The tuition fees listed below are provisional and subject to adjustment:

Full-time PGDE Programmes	Part-time PGDE Programmes
Local students: HK\$42,100 per annum	Local students: HK\$21,050 per annum
Non-local students*: HK\$145,000 per annum	Non-local students*: HK\$72,500 per annum

* Starting from the 2019/20 intake cohort, a new definition of Non-local Students (NLS) has been adopted in accordance with the HKSAR Government policy. For details, please refer to the website (www.apply.eduhk.hk/pgde/fees).



Extension fees will be charged to participants who have to extend their studies beyond the normal duration. Full-time participants who choose English as their Major Subject Studies will be required to attend an Immersion Programme. This is a compulsory part of the programme which is heavily subsidised by the University and by other sources of funding. However, participants are required to contribute part of the cost.

Entrance Requirements

To be eligible for admission, applicants should normally:

1. hold a recognised Bachelor's degree with a major in a discipline relevant to their chosen Major Subject Studies*, or equivalent;
2. have passed the admission interview/subject test(s) and/or language test(s), where required; and
3. be serving teachers in local Secondary Schools (for PT PGDE(S)).

*1. Applicants for English who do not hold a degree majoring in English are also welcome to apply.

*2. Applicants for Design and Technology should normally hold a degree in creative media and design/engineering/computer science/information technology or other related disciplines in design and technology. Other applicants who do not hold a degree majoring in any of the above may also be considered.

*3. Applicants for Home Economics/Technology and Living should normally hold a degree in Food and Nutrition Science / Fashion, Clothing and Textiles / Health or other related disciplines in Home Economics/Technology and Living. Other applicants who do not hold a degree majoring in any of the above may also be considered.

Teaching Requirements for Field Experience

The medium of instruction in the vast majority of Hong Kong schools is Cantonese and/or English. Participants are required to possess a proficient level of language skills (oral, listening and written) to enable them to perform the duties during Field Experience.

For Full-time PGDE(S) Participants

Full-time participants will be arranged to undertake 4[#] and 8 weeks of full-time block practice in Semester One and Two respectively in local Secondary Schools. The teaching load is normally 8-10 periods per week/per 5 to 7-day cycle in Semester One and 10-12 periods per week/per 5 to 7-day cycle in Semester Two.

[#] except that participants who have chosen English as their Major Subject Studies will take part in the compulsory immersion programme in Semester One.

For Part-time PGDE(S) Participants

The part-time programme is primarily designed for serving teachers. Participants in the programme are required to fulfill the following teaching requirements for Field Experience:

1. About teaching periods
 - (a) For participants having a full-time teaching post in secondary schools^{note 1}

They are required to have a minimum of 4 periods^{note 2} per week/per 5 to 7-day cycle for the chosen subject during the course of study in the programme.
 - (b) For participants without a relevant teaching post

They are required to make own arrangements to undertake 6 consecutive weeks of full-time block practice in secondary schools^{note 1} during the FE supervision period^{note 3} in each FE and teach at least 8 periods^{note 2} per week/per 5 to 7-day cycle for the chosen subject throughout the block practice period.
2. About class setting and class size

All participants are required to conduct teaching/teaching practice in regular class settings with a minimum 10 pupils in a class^{note 4}.

3. About teaching mode

All participants are required to conduct teaching/teaching practice in simulated mode, virtual mode (synchronous and/or asynchronous modes) and authentic mode of classroom teaching as required by the programme/subject. In case of prolonged class suspension that the requirements of the authentic mode of classroom teaching cannot be fulfilled, an Extended School Attachment will need to be arranged.

Note 1: It refers to local Secondary Schools adopting local secondary school curriculum.

Note 2: Each period normally refers to a 30-40 minutes duration.

Note 3: FE Supervision period is normally from November to early May of the academic year.

Note 4: For special schools, the minimum number of pupils in a class is 8 according to the actual class size.

Other subject specific teaching requirements

Science:

- i. Class level requirement:

Participants of Science major are required to teach relevant Science subject at senior secondary level (i.e. S3 to S6 level) for at least half of the periods per week/per 5 to 7-day cycle in each FE.
- ii. Relevant subjects to teach for Field Experience include:
 - Biology for Biology-focus participants
 - Physics for Physics-focus participants
 - Chemistry for Chemistry-focus participants



Application and Admission



Probity Requirements: Other than the application fee, applicants are not required to pay any additional fees during the application process. In addition, please be reminded not to offer any advantage to EdUHK staff and/or any person involving admissions at EdUHK in connection with your application. Otherwise, your action may violate Hong Kong's Prevention of Bribery Ordinance (Cap. 201).

EdUHK does not encourage students to entrust their application to any third party agents and we always contact applicants directly on updates regarding the applications. You must complete and submit your own application and provide your own personal and contact details. Please refer to the official EdUHK channels, such as programme websites and the admission system, for the required information to complete your application.

General Entrance Requirements

Applicants should normally hold a recognized Bachelor's/ Master's degree or equivalent.

Some postgraduate programmes may require applicants to submit other documents such as public examination results/Study Statement/Research Proposal/Referee's Report, etc. Please refer to individual programme information/website for details.



English Language Requirements

Applicants whose entrance qualification is obtained from an institution in a non-English speaking system should normally fulfil one of the following minimum English proficiency requirements:

1. Research Postgraduate (RPg) and Doctor of Education (EdD)[#] Programmes
 - a. Overall score of IELTS 6.5 with no subtest lower than 6.0 (academic version); or
 - b. TOEFL score of 80 (internet-based test); or
 - c. Other equivalent qualifications.*

[#] For the English Language Requirements of EdD(Chinese), please refer to the Programme website.

* The College English Test (CET) is not accepted as an equivalent qualification.

2. Taught Master's Programmes

- a. Overall score of IELTS 6.0 (academic version) (the test should be taken in test centres and the result should be valid within two years); or
- b. TOEFL score of 80 (internet-based test) (the test should be taken in test centres and the result should be valid within two years); or
- c. Band 6 in the Chinese Mainland's College English Test (CET) (a total score of 430 or above and the test result should be valid within two years); or
- d. Grade C or above in GCSE/GCE OL English; or
- e. Other equivalent qualifications.

For example, if you are applying for 2024/25 academic year, your IELTS / TOEFL / CET6 test must be obtained on or after 1 January 2022.

Individual programmes/subjects may have different English language requirements. Please refer to individual programme information or our website ([https://www.eduhk.hk/acadprog/EnReq\(Pg\)/](https://www.eduhk.hk/acadprog/EnReq(Pg)/)) for details.



Application Deadline and Late Applications

The majority of our postgraduate programmes accept September intake only. Nevertheless, some programmes may accept both January and September intakes. We operate a rolling admission process for a majority of programmes, which means the sooner you apply, the sooner your application will be assessed. We urge you to submit your application as early as possible. We will still accept applications after the deadlines at the University's discretion.

However, priority will be given to applications received by the deadlines. The application deadline and admission schedule can be found on our website (www.eduhk.hk/acadprog/postgrad/). You are advised to check the website regularly to obtain up-to-date admission information.

Non-local Applicants

We welcome applications from local and non-local applicants. Starting from 2019/20 intake cohort, a new definition of Non-local Students (NLS) has been adopted in accordance with the HKSAR Government policy. If you hold one of the following documents issued by the Immigration Department of the HKSAR, you are regarded as a non-local student for the purpose of admission to our programmes:

- student visa/entry permit; or
- visa/entry permit under the Immigration Arrangements for Non-local Graduates (IANG); or
- dependant visa/entry permit (You were 18 years old or above when you were first issued with such visa/entry permit by the Immigration Department of the HKSAR.)

Definition of local and non-local applicants is listed on our website: www.eduhk.hk/acadprog/nonlocal. To make direct enquiries on the definition of non-local students, please contact the Education Bureau (EDB):

Email: edbinfo@edb.gov.hk

Fax: (852) 2804 6499

When you submit an application, you are required to indicate clearly which document you are holding for study. You may be asked to provide a copy of your passport/visa to support your application during the admission process. If the documents produced do not correspond to your local/non-local status entered in the application form, any offers made to you may be revoked and all fees paid will not be refunded. It is always your responsibility to ensure that you have a valid visa which covers your study period. You should inform the University about the change of your condition of stay by providing relevant documentary proof to tpgadmission@eduhk.hk as soon as possible.

Non-local applicants are advised to apply as early as possible as it often takes considerable time (normally 6 to 8 weeks) for the Immigration Department of the HKSAR to process your visa applications upon receipt of all the required documents. For details, please consult the Immigration Department of the HKSAR directly (www.immd.gov.hk/eng/services/index.html).

Submission of Application

Please submit your application online and upload the relevant academic documents via <https://www.eduhk.hk/acadprog/online/>. The University does not accept paper applications. Please read through the important notes contained in the “Online Application Guided Tour” and visit the relevant website(s) before you start an online application process. Please make sure that your choice of programme/subject/study mode is correct before you submit an application. No changes will be allowed once an online application has been submitted.



Upon successful submission of application, you will receive an application acknowledgement by email which contains your Application Number. Please quote your Application Number in all communications with the University.

Application Fee

Application fee for local applicants and non-local applicants is HK\$150 and HK\$300 (per programme choice) respectively which is non-refundable and non-transferable unless the programme you have applied is cancelled by the University. You are encouraged to pay the application fee online by using either VISA/Master credit card or UnionPay. Alternatively, you may choose to pay the fee by “Other Payment Methods” as indicated on the payment page and upload the copy of your payment proof (e.g. bank-in slip, ATM advice, Telegraphic Transfer) onto the system.

Supporting Documents

You should upload the following academic documents, language test results and other supporting documents direct on <https://www.eduhk.hk/acadprog/online/>:



- Graduation certificate(s) and official final transcript(s) of your post-secondary qualifications;
- Applicants who obtained degrees from universities in Mainland China are required to provide both Degree Certificate (學位證書) and Graduation Certificate (畢業證書). Also, an Online Verification Report of Higher Education Degree Certificate (學位在線驗證報告) and an Online Verification Report of Higher Education Qualification Certificate (教育部學歷證書電子註冊備案表) issued by the CHSI (學信網) www.chsi.com.cn/xlcx/bgcx.jsp with validity period of six months are needed;
- The University may require you to provide a “Report for Qualifications Assessment” issued by the Hong Kong Council for Accreditation of Academic and Vocational Qualifications (HKCAAVQ) in order to support your application;
- If you are a current final year student of a degree or postgraduate programme, the latest official transcript or testimonial certifying your current student status is needed. You will be required to submit an official final transcript/testimonial showing your graduation status in July/August;
- Official score report(s) of language test results (e.g. IELTS/TOEFL/GCSE/GCE/CET6/PSC/HSK/LPAT, etc);
- Certificates of HKALE, HKCEE and HKDSE; and
- Other documents (e.g. Study Statement, Research Proposal, Referee’s Report, etc), if applicable.



If you are our graduate in 1995 or after, you do not need to submit any copies of academic transcript(s) and certificate(s) issued by HKIEd/EdUHK. For qualifications obtained in other universities or institutions after graduating from EdUHK, submission of transcript(s) and certificate(s) is still required.

Your application will remain incomplete until we receive all the necessary supporting materials. Due to system limitations, the maximum capacity of your upload files is 25 MB in total whereas the maximum size for each file is 4 MB.

Please do not send any original graduation certificates to the University in any circumstances as the University will not be responsible for any documents mislaid. The University reserves the right to require you to apply for official transcript (either electronic transcript or hardcopy) and/or language test reports to be sent directly to EdUHK from the issuing universities/authorities before confirming admission offer and upon programme registration. Failure to do so shall lead to disqualification of the application and any offer made will be rescinded.

Applicants who have attended international institutions whose transcripts are in a language other than Chinese or English must submit those transcripts with officially certified English translations.

Submitted documents will not be returned. All supporting documents of unsuccessful applications will be destroyed at the end of the admission exercise.

Interviews and Admission Results

Shortlisted applicants invited for admission interview/test will be notified by email. Please check your registered email account regularly after submission of application in order to receive any updates or interview invitation from the University. Some applicants may receive a direct offer. Those who have not been invited for interview nor given a direct offer may still be considered if the intake quota is not filled.

You will be informed of your application updates, such as application acknowledgement, interview and registration arrangements, etc., via your registered email. No letters will be posted to you except in very exceptional circumstances. It is therefore important that the email address you provided is correct and you are strongly advised to check your email frequently. Please login your online application account to update your email address and contact phone number at any time.

Successful applicants will receive individual notifications by email. Applicants who have not been offered admission before August may assume their applications unsuccessful. No individual notifications will be sent to unsuccessful or waitlisted applicants.

Acceptance of Admission Offer

Applicants who wish to accept the admission offer will be required to:

1. indicate your acceptance of offer directly through the Online Application System (www.eduhk.hk/acadprog/online/);
2. quote the assigned EPN number for identification when you make a payment of acceptance fee;
3. upload a payment proof of the acceptance fee;
4. upload your HKID/mainland ID & EEP/passport; and
5. apply for official transcripts, language test reports, and other supporting documents to be sent directly to the University from the issuing universities/authorities. Please refer to the offer letter and attachments for details.

Non-local students who apply for student visa/entry permit are required to return a signed visa application form and supporting documents, and a completed application form for on-campus accommodation (if applicable).

If you have received more than one admission offer from the University, you can choose to enrol in one programme only. Details of "How to Accept an Admission Offer" can be found on our website (www.eduhk.hk/acadprog/OnlineAccept/).



Programme Registration

Programme registration and orientation will normally be held in July/August. If you have submitted all the required documents to the satisfaction of the University, we will perform online registration for you and send you an email notification in due course. The registration and orientation schedule will be announced on our website (www.eduhk.hk/postgrad_reg/) in due course. Please check your registered email account near the time.

Failing to provide the required documents may result in your unsuccessful enrolment in the programme. If documents provided are found to be falsified, unclear, misleading or inconsistent with the qualifications stated in your application, or do not fulfill the requirements for admission, your admission offer may be revoked and all paid fees will not be refunded. The University reserves the right to request you to present the original documents in person if deemed necessary.

If you need a student visa to study in Hong Kong, you will be required to pay a visa processing fee of HK\$530 after programme commencement. Non-local students who fail to obtain a student visa and the necessary travelling documents will result in not being permitted to register in the programme.



Credit Transfer

Credit transfer may be granted to students in recognition of their prior learning experiences. All applications must follow the time-limit, department and programme specific requirements. Please read the Policy and the Guidelines on Credit Transfer listed on Registry's website (www.eduhk.hk/re/) and consult your Programme Leader/Subject Coordinator before submitting an application.

Cancellation of Programme

The University reserves the right to cancel any programme(s) in which case all fees paid will be refunded.

Double Registration

Students who are enrolled in any full-time award-bearing programmes (lasting for one year or longer) of the University are not permitted to simultaneously register for another qualification at the University or a post-secondary qualification at any institutions except with prior approval by the Board of Graduate Studies. Violation of this regulation will lead to discontinuation of studies from the University. In case of doubt, students should seek advice from the Board of Graduate Studies (via the Graduate School).

Applicants with Special Needs

All applicants will be considered on the same basis. Please provide information about the nature and degree of disability/special educational needs when submitting the application. The collection of information about the nature and degree of any disabilities/special educational needs will be used by the University to assess the provision of facilities to assist students during the application stage and after enrolment. The Student Affairs Office (SAO) provides various supporting services for students with special educational needs. Please visit SAO website (www.eduhk.hk/sao/) for details.

Right of Access to and Correction of Information

In accordance with the Personal Data (Privacy) Ordinance, you have the right of access to and correction of the information contained in your application, and the right to request a copy of such data. If you wish to do so, you may submit your request in writing to the Admissions, Registrations and Academic Planning Section of the Registry.

Applications and Admissions Enquiries

Registry

Phone : (852) 2948 6886 (852) 2948 6162

Email : tpgadmission@eduhk.hk

Website : <https://www.eduhk.hk/acadprog/postgrad/>

In person : Admissions, Registrations and
Academic Planning Section
The Education University of Hong Kong
10 Lo Ping Road, Tai Po, Hong Kong

Global Affairs Office

Phone : (852) 2948 7654 (852) 2948 8198

E-mail : gao@eduhk.hk

Website : <https://www.eduhk.hk/gao/>

In person : Room A-G/F-09
Cho Kwai Chee Foundation Building
The Education University of Hong Kong
10 Lo Ping Road, Tai Po, Hong Kong

Facilities and Student Services



Library

The EdUHK Library comprises Mong Man Wai Library on Tai Po Campus and Tseung Kwan O Study Centre Library in Tseung Kwan O, and offers a full range of print and online information resources and services.

Mong Man Wai Library and Tseung Kwan O Study Centre Library occupy a total floor area of 8,300 square meters and provide study places for over 1,500 users, and postgraduate students can enjoy priority in advance booking of Study Carrels located at the Library's Research Commons. The Library is committed to supporting e-learning on both desktop and mobile platforms. In addition to regular IT hardware, state-of-the-art learning facilities such as 24-hour study and discussion areas with presentation equipment, video-conferencing facilities, 3D and large-format printers, drones, professional and consumer level 360 cameras, 3D/HD/4K video viewing and production equipment, as well as other facilities supporting AR/VR production are provided at the Library. The Library also houses one of the most comprehensive collections on education and complementary disciplines in the Asia-Pacific region. It also has a strong coverage on humanities and social sciences. Other than print materials, we have acquired and developed a substantial collection of electronic resources, and most of them are available online. In addition to borrowing books and media items from the Library, EdUHK students are entitled to request books or journal articles that are available elsewhere through the Library's Inter-library Loan and Document Delivery services. Books can be requested and borrowed from the other seven UGC-funded university libraries via Hong Kong Academic Library Link (HKALL), and copies of journal articles and book chapters can be requested via the

global RAPID document delivery service. Postgraduate students can also request books or journal articles not found at the Library from other local non-UGC academic libraries or even from our overseas partner libraries. They can also apply online for a JULAC Library Card to gain access to and to borrow books in person from other UGC-funded university libraries.

* (For further details, please visit the Library Website at www.lib.edu.hk and a Library virtual tour at www.lib.edu.hk/vrprojects/libtour/)



Library Website



Library virtual tour

Student Services

Counselling Services

A wide range of programmes and services are offered to enhance your psychological wellbeing. Psychological counselling by professional counsellors helps you find ways to deal with personal, interpersonal, emotional, academic and family issues. All information will be kept confidential. Counsellors also offer training and activities to enhance your psychological wellness.



For further information, please visit our website at www.edu.hk/sao/info/counselling_services.

Career Development Service

The Career Development Service offers a wide range of resources and programmes designed to enhance your career preparation. Our services include career preparation training series, career fairs, recruitment talks, and industry seminars to help you understand your career interests, develop a solid career plan, improve your writing on CV and cover letter, practice interview skills, gain grooming and etiquette tips, and enhance your employability. The Mentorship Scheme connects you with industry professionals who possess updated market and company knowledge and can provide valuable guidance and support. Internship placements are available locally, overseas, and in the Greater China Region, providing practical work experience in real working environments. The EdUHK online job-search platform, "Ed Job Plus" (<https://edjobplus.eduhk.hk/EdJobPlus/eng/login/index/>), allows you to easily apply for full-time, part-time, internship, and iWork job vacancies, as well as access to useful training videos and career resources.



Please visit the website of the Career Development Service of SAO at www.eduhk.hk/sao/info/career for more information about our service.

Health Service

Located on the first floor of the Cho Kwai Chee Foundation Building, the Health Centre provides primary medical services for all students. For dental services, students can enroll on the Voluntary Student Dental Plan on a voluntary basis. There are 5 off-campus dental clinics available, with 1 located in Tai Po Centre. To promote holistic health for all, the Student Affairs Office partners with medical and dental service providers to organise health education programmes in the form of talks and exhibitions on a regular basis.



For more information, please refer to: www.eduhk.hk/sao/info/campus_life/health_care_services/overview/.

Student Accommodation

All newly admitted full-time UGC-funded Research Postgraduate (RPg) students are eligible to apply for on-campus accommodation in the RPg flats in Jockey Club Student Quarters JCSQ) managed by the Student Affairs Office (SAO). The RPg flats in JCSQ are 6-person or 8-person flats, each with single/shared twin bedrooms. Student-residents have to share the common sitting/dining areas, terrace, kitchen/laundry room, toilets and bathrooms in each flat with their flatmates. Each bedroom is covered with Wi-Fi network and individual computer ports. All student-residents have the responsibility for keeping their own flats and rooms clean and tidy.

Hall fees consist of lodging charge and hall life education fee. Hall fees will be reviewed annually due to inflation adjustment and other related factors. Apart from the lodging charge and hall life education fee, all student-residents of the JCSQ have to share the electricity charges with their flatmates.



For more information about the RPg flats and the hall fees of the current residential year, please browse the website of Hall Management Section of SAO (www.eduhk.hk/sao/info/student_halls).

For non-local postgraduate students on self-funded programmes who are not eligible for applying the UGC-funded student halls/quarters, they may apply for temporary student bed places accommodation at our Tai Po campus managed by the Estates Office (EO) subject to availability of places. Application form for temporary student bed places offered by the EO will be attached with admission offer letter. For enquiry, please contact the EO by email at tsbp2324@eduhk.hk or by phone at (852) 2948 8822. Students may visit the Off-campus Accommodation Information Platform available on the website of Hall Management Section of SAO (www.eduhk.hk/sao/info/student_halls) for reference information on renting accommodation outside the campus.



Non-local Student Support Services

To facilitate non-local students' adjustment of campus life, cultural adaption and social networking in Hong Kong, the Student Affairs Office (SAO) organises briefing sessions, orientation activities and cultural integration programmes to help you create a fruitful university life. Please visit the website



of Student Affairs Office (SAO) to obtain useful information related to studies at EdUHK. For more information, please refer to: www.eduhk.hk/sao/info/non_local_student_support_services.

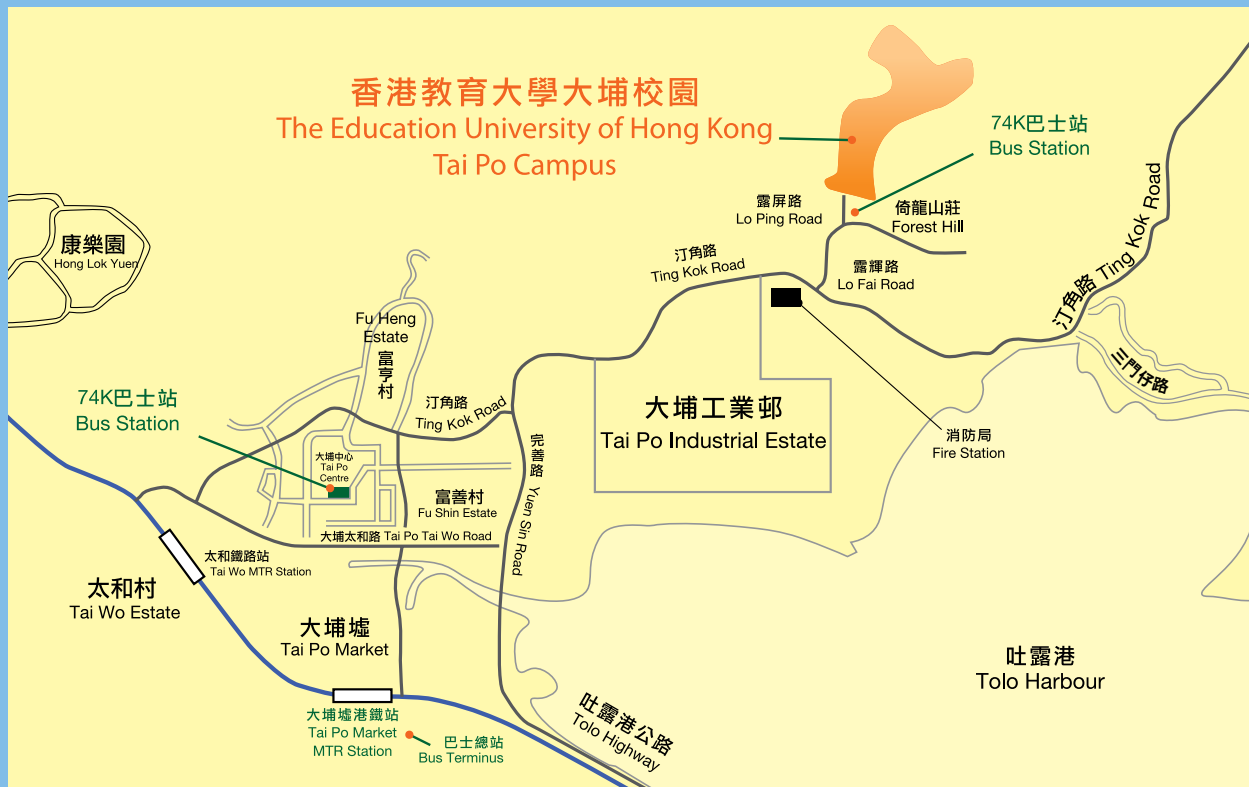
Taught Postgraduate Student Support Services

To strengthen the support to Taught Postgraduate (TPg) students, the Student Affairs Office (SAO) offers an array of initiatives aimed at facilitating the transition to campus life, promoting cultural integration, and fostering social connections. SAO also organises informative briefing sessions, mentorship programme, and various cultural activities, actively engaging TPg students and encouraging them to create fulfilling and enriching university experience. For the resources and guidance tailored specifically to TPg students, please refer to: https://www.eduhk.hk/sao/info/taught_postgraduate_student_support

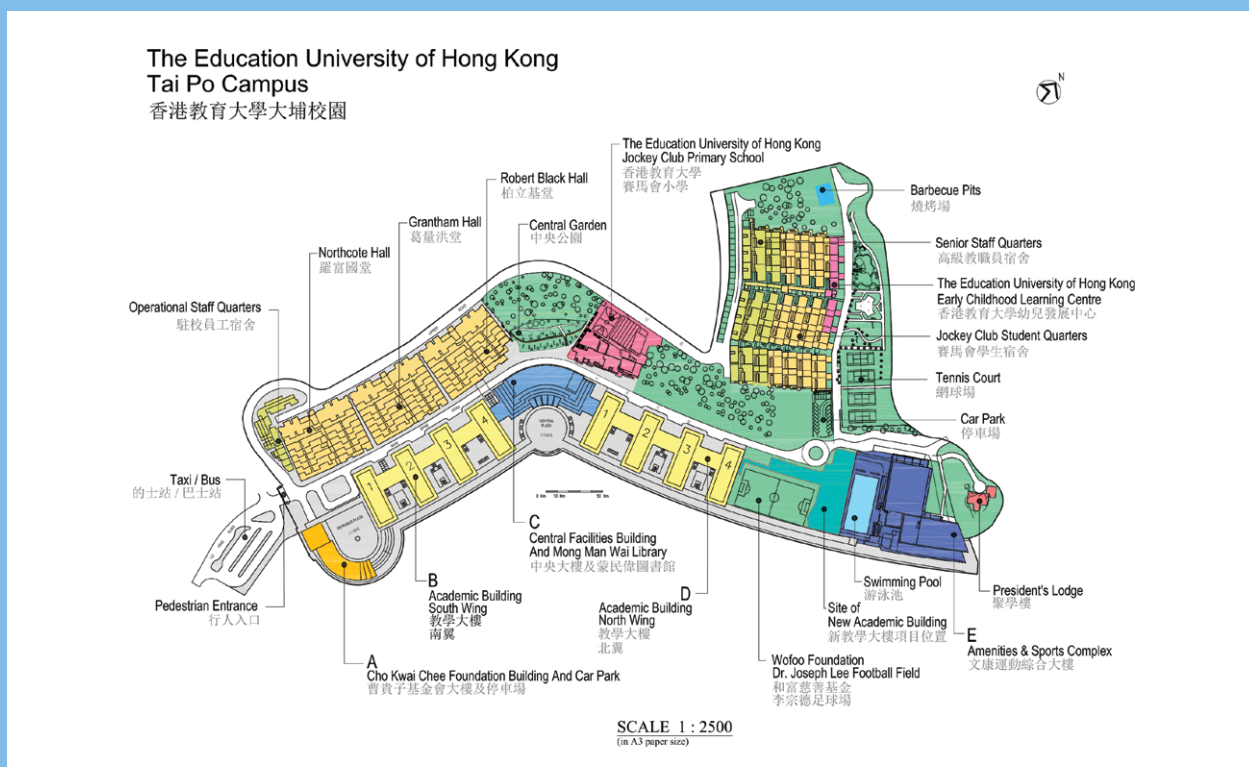


Location and Campus Map

Location Map



The Education University of Hong Kong Tai Po Campus







Postgraduate Programmes
www.eduhk.hk/